

CamPROBE

SAFE, SIMPLE AND
COST EFFECTIVE



@Camprobe



@JEBTechnologies

Facilitating transperineal prostate biopsies

What is CamPROBE?

The CamPROBE device (Cambridge Prostate Biopsy device) is a simple and cost effective solution that is intended to facilitate transperineal prostate biopsies under local anaesthetic.

It is a surgically invasive, single use, sterile device consisting of a stainless steel cannula, an integrated coaxial needle and an adhesive attachment base. The needle is inserted at two entry points on either side of the perineum and CamPROBE is then advanced to the prostate area under simultaneous local anaesthetic infiltration. Once in position, the integrated delivery needle is removed and the cannula can be used as an access sheath for prostate biopsies.

CamPROBE can be angled or repositioned to reach different areas of the prostate without the need for superficial and deep structure repuncture. Two body puncture points are required to introduce CamPROBE, resulting in low pain scores, patient comfort and patient acceptability. Procedural access through the perineum reduces complications due to infections and sepsis, compared to transrectal procedures.

Device features :



Introducer needle

A luer slip syringe is attached to the luer hub for the simultaneous delivery of local anaesthetic during cannula insertion.

Stainless steel cannula

The stainless steel cannula provides access for an 18G biopsy needle after the introducer needle is removed.

Adhesive attachment base

The flexible and sticky attachment base adheres to the patient's perineum to limit the cannula movement during the procedure.

A step by step guide

Step 1



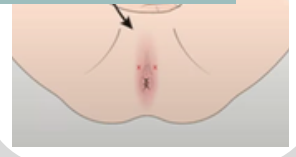
Prepare the CamPROBE device, 10ml sterile saline, 10 ml local anaesthetic, orange and green needles, swabs, antiseptic wash, biopsy cassettes, post procedure dressing and an 18G biopsy needle.

Step 2



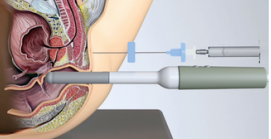
Assemble the CamPROBE device and flush 2-3ml of Sterile Saline through the CamPROBE device.

Step 3



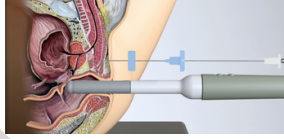
Mark a point on the perineum approx 1.5cm up from the anal verge in the midline. Punctures will be made 1.5cm to the right and left of this point laterally.

Step 4



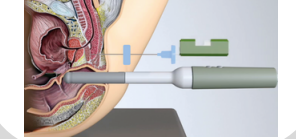
Insert CamPROBE device and advance with 10ml of local anaesthetic at entry points. Deliver local anaesthetic to the peri- prostatic space as the device is placed into the perineum and in position.

Step 5



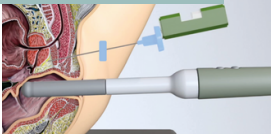
Place attachment base onto perineum skin. Remove the syringe and inner delivery needle once deployed.

Step 6



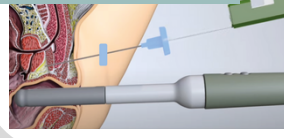
Insert an 18- gauge biopsy needle through the funnelled entrance of the cannula.

Step 7



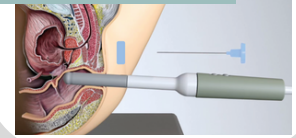
Direct the biopsy cannula to different areas of the prostate using the ultrasound probe as guidance.

Step 8



Remove the biopsy needle once all biopsies have been taken.

Step 9



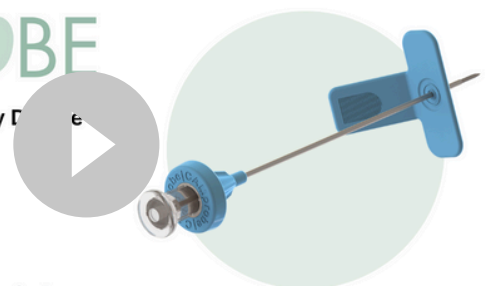
Withdraw the cannula before removing attachment base. Repeat procedure on contralateral side using new CamPROBE device..

Click [here](#) to view the Instructions for Use (also found in the device packaging)

**Watch the CamPROBE
Instructional video here:**

CamPROBE

Cambridge Prostate Biopsy Device



Instructional video

JEB Technologies

Multi-centre safety and performance trial



Conclusion: CamPROBE is safe, transferable and maintains high diagnostic yields. There were no infections, device deficiencies or safety issues reported. The procedure was well tolerated with excellent patient- reported perception and low pain scores.

Device Information and Purchasing

Device intended purpose

The CamPROBE device is intended to facilitate transperineal prostate biopsies under local anaesthetic.

Indications for use

CamPROBE is indicated for use in adult males over the age of 18, with suspected or known prostate cancer who need a prostate biopsy.

Use environment

Surgical operating theatres, surgical day case procedure rooms or outpatient clinics.

Distributed in the UK by:

Aquilant
A HCS Company

csuk@hc21.group
01256 306506
healthcare21.eu