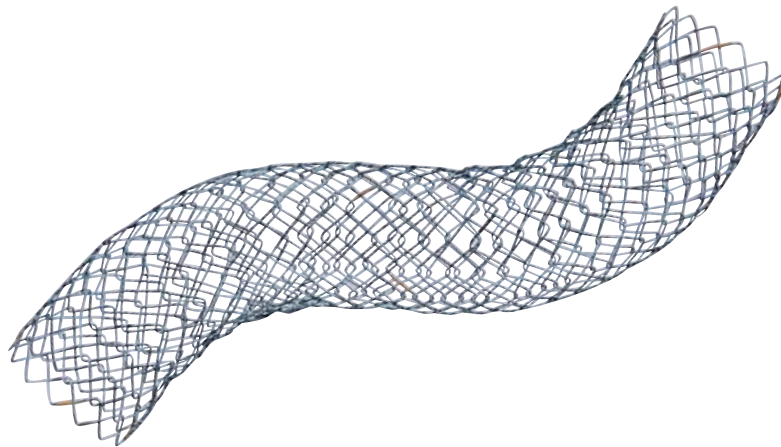




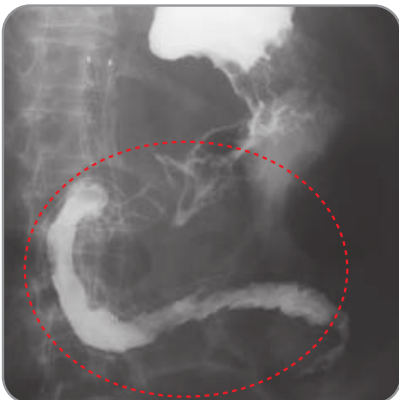
Pyloric / duodenal stent

for malignant gastric outlet obstruction



Feature

- **Unfixed cell with weaving construction**
 - Maximize conformability to prevent migration and the risk of perforation
 - Optimal combination of radial and axial force to maintain patency in tortuous anatomy
- **Radiopaque marker** : 4(four) at both ends & 2(two) in the middle



◀ 3 days after stent placement for long duodenal obstruction, showing fully expanded stents and good passage of contrast medium

[GASTROINTESTINAL ENDOSCOPY Vol. 66, No. 2 : 2007]

Ordering Information

TTS (Through The Scope)					OTW (Over The Wire)				
Code	Stent		Delivery		Code	Stent		Delivery	
	Diameter (mm)	Length (cm)	Profile (Fr)	Usable Length (cm)		Diameter (mm)	Length (cm)	Profile (Fr)	Usable Length (cm)
PDT1806	18	6	10	180	PD1806	18	6	12	135
PDT1808		8			PD1808		8		
PDT1810		10			PD1810		10		
PDT1812		12			PD1812		12		
PDT1814		14			PD1814		14		
PDT1815		15			PD1815		15		
PDT2006	20	6			PD2006	6			
PDT2008		8			PD2008	8			
PDT2010		10			PD2010	10			
PDT2012		12			PD2012	12			
PDT2014		14			PD2014	14			
PDT2015		15			PD2015	15			
PDT2206	22	6			PD2206	6			
PDT2208		8			PD2208	8			
PDT2210		10			PD2210	10			
PDT2212		12			PD2212	12			
PDT2214		14			PD2214	14			
PDT2215		15			PD2215	15			
PDT2406	24	6	PD2406	6					
PDT2408		8	PD2408	8					
PDT2410		10	PD2410	10					
PDT2412		12	PD2412	12					
PDT2414		14	PD2414	14					
PDT2415		15	PD2415	15					
					PD2606	26	6	18	
					PD2608		8		
					PD2610		10		
					PD2612		12		
					PD2614		14		
					PD2615		15		
					PD2806	28	6		
					PD2808		8		
					PD2810		10		
					PD2812		12		
					PD2814		14		
					PD2815		15		

* Available 220cm delivery system
Coding : PDT** __-22

Released Articles

- * *Safety and efficacy of a new non-foreshortening nitinol stent in malignant gastric outlet obstruction (DUONITI study): a prospective, multicenter study* ENDOSCOPY 2011 J.E. van Hooft, MD et al.
- * *Palliation in patients with malignant gastric outlet obstruction with a newly designed enteral stent: a multicenter study* GASTROINTESTINAL ENDOSCOPY Vol. 66, No. 2: 2007 1440-1746. 2007 Iruru Maetani



Aquilant Interventional

UK Distributors

Aquilant Interventional
 Aquilant House, Units B1-B2
 Bond Close, Kingsland Business Park
 Basingstoke, Hampshire, RG24 8PZ

T: +44 (0) 845 6024 007
 F: +44 (0) 1256 365486
 E: contactus@aquilantinterventional.com
 W: www.aquilantinterventional.com