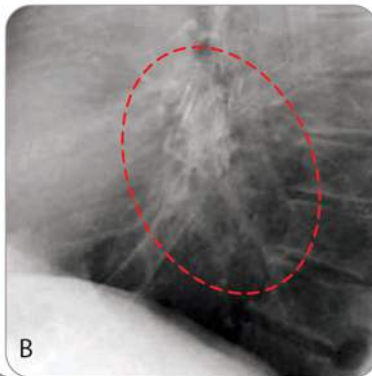
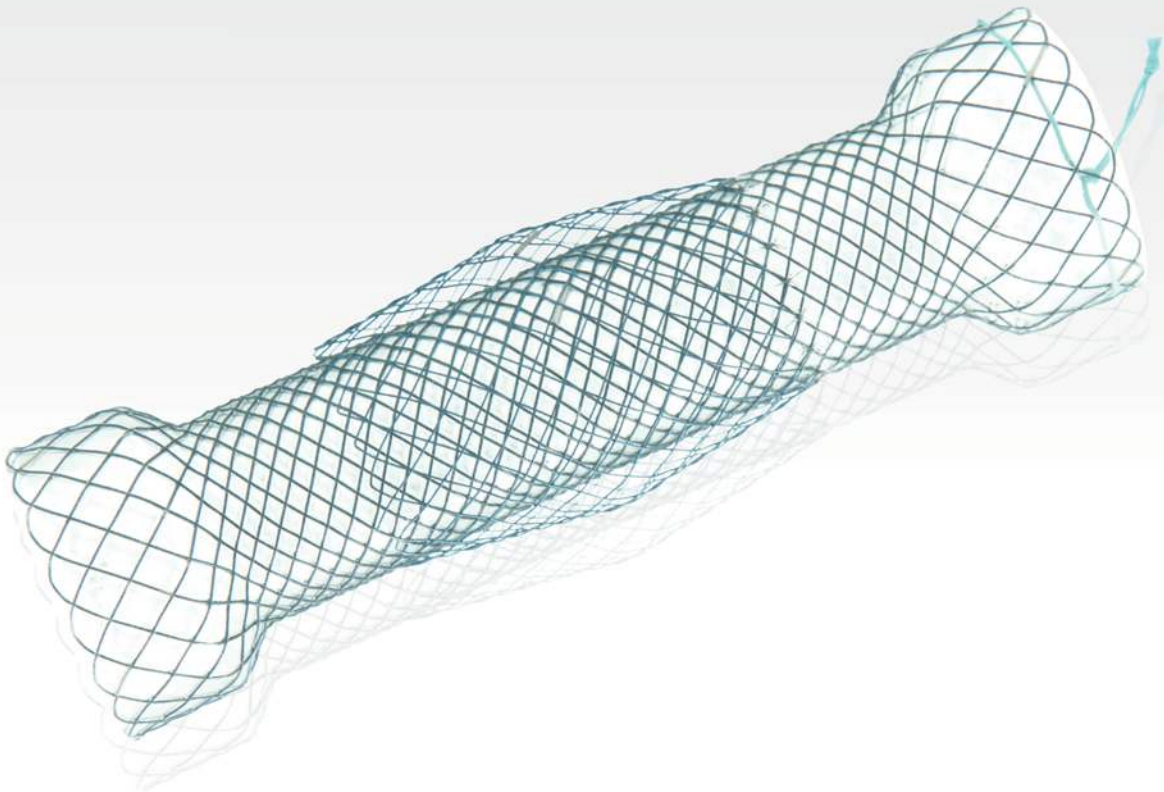




DOUBLE™ Esophageal stent



"Its double-layered design is probably important in preventing migration. In addition, the complete covering of the Niti-S stent may be a factor in preventing tissue overgrowth at both ends of the stent."

- ◀ **A.** Endoscopic view inside the Niti-S Double™ stent
- B.** The Niti-S Double™ stent is positioned partially in the esophagus and expanding below the diaphragm

[GASTROINTESTINAL ENDOSCOPY Vol. 63, No. 1 : 2006]

Taewoong Niti-S™ Double™ Esophageal stent for malignant esophageal strictures

● Features

- **Double layered design**
 - Silicone full covering prevents the risk of tumor ingrowth
 - Additional uncovered outer mesh helps to resist migration
- **Retrieval string** at proximal end helps repositioning
- **Radiopaque marker** : 4(four) at both ends & 2(two) in the middle

● Ordering Information

Distal Release				
Code	Stent		Delivery	
	Diameter (mm)	Length (cm)	Profile (Fr)	Usable Length (cm)
ES1606FD	16	6	18	70
ES1608FD		8		
ES1610FD		10		
ES1612FD		12		
ES1614FD		14		
ES1615FD		15		
ES1806FD	18	6	18	
ES1808FD		8		
ES1810FD		10		
ES1812FD		12		
ES1814FD		14		
ES1815FD		15		
ES2006FD	20	6	20	
ES2008FD		8		
ES2010FD		10		
ES2012FD		12		
ES2014FD		14		
ES2015FD		15		
ES2206FD	22	6	22	
ES2208FD		8		
ES2210FD		10		
ES2212FD		12		
ES2214FD		14		
ES2215FD		15		
ES2406FD	24	6	22	
ES2408FD		8		
ES2410FD		10		
ES2412FD		12		
ES2414FD		14		
ES2415FD		15		
ES2806FD	28	6	28	
ES2808FD		8		
ES2810FD		10		
ES2812FD		12		
ES2814FD		14		
ES2815FD		15		

Proximal Release				
Code	Stent		Delivery	
	Diameter (mm)	Length (cm)	Profile (Fr)	Usable Length (cm)
ESP1606FD	16	6	18	70
ESP1608FD		8		
ESP1610FD		10		
ESP1612FD		12		
ESP1614FD		14		
ESP1615FD		15		
ESP1806FD	18	6	18	
ESP1808FD		8		
ESP1810FD		10		
ESP1812FD		12		
ESP1814FD		14		
ESP1815FD		15		
ESP2006FD	20	6	20	
ESP2008FD		8		
ESP2010FD		10		
ESP2012FD		12		
ESP2014FD		14		
ESP2015FD		15		
ESP2206FD	22	6	22	
ESP2208FD		8		
ESP2210FD		10		
ESP2212FD		12		
ESP2214FD		14		
ESP2215FD		15		
ESP2406FD	24	6	22	
ESP2408FD		8		
ESP2410FD		10		
ESP2412FD		12		
ESP2414FD		14		
ESP2415FD		15		
ESP2806FD	28	6	28	
ESP2808FD		8		
ESP2810FD		10		
ESP2812FD		12		
ESP2814FD		14		
ESP2815FD		15		

Released Articles

- * **Outcomes Following Oesophageal Stent Insertion for Palliation of Malignant Strictures: A Large Single Center Series**
Journal of Surgical Oncology 2012;105:60-65 Niall Lynch, et al.
- * **New Design Esophageal Stents for the Palliation of Dysphagia From Esophageal or Gastric Cardia Cancer: A Randomized Trial**
Am J Gastroenterol 2008;103:304-312 Els M.L. Verschuur
- * **A new esophageal stent design (Niti-S stent) for the prevention of migration: a prospective study in 42 patients**
GASTROINTESTINAL ENDOSCOPY Vol. 63, No.1: 2006 Peter D. Siersema



UK Distributors

Aquilant Interventional
Aquilant House, Units B1-B2
Bond Close, Kingsland Business Park
Basingstoke, Hampshire, RG24 8PZ

T: +44 (0) 845 6024 007
F: +44 (0) 1256 365486
E: contactus@aquilantinterventional.com
W: www.aquilantinterventional.com