



2019

ADVANCING DEEPER INSIGHTS IN ENDOSCOPY

FUJIFILM
Value from Innovation



FUJIFILM
Value from Innovation

CONTENT

About Fujifilm	4–5
Technologies	6–15
ELUXEO™ 700 series	16–25
600 Series	26–27
580 Series	28–31
Double Balloon Endoscopy System	32–37
530 Series	38–43
Video Processors & Light Sources	44–47
Ultrasonography Systems	48–53
Accessories, Visualisation, Monitors	54–61
Service & Partnership	62–63
Recommendations	64–65





OPTIMISING YOUR DAILY WORK WITH OUR INNOVATIVE SOLUTIONS



2018 THOMSON REUTERS

TOP 100
GLOBAL TECH LEADER

Fujifilm Corporation was named a Thomson Reuters 2018 Top 100 Global Technology Leader, in recognition of industry's most operationally sound and financially successful organisations.

HEALTHCARE

Fujifilm is renowned as one of the world's largest imaging companies, pioneering high-definition diagnostic imaging and information systems for healthcare facilities and medical institutions.

Our clinically proven products and technologies are constantly being developed and refined to make the work of health professionals more effective and efficient.

At Fujifilm we are constantly innovating and creating new solutions that address the practical needs of our global customers in various business fields including healthcare, graphics systems, optical devices, recording media and photographic technologies.

Every year we invest around seven percent of our consolidated turnover in research and development including dedicated research and the nurturing of close working relationships with international specialists. This ensures that we not only meet the highest quality requirements but also contribute to the advancement of culture, science, industry and technology as well as improved health and environmental protection in society.

At Fujifilm we are continuously developing new technologies, products and services that inspire and excite people everywhere and offer the potential to expand the horizons of tomorrow's businesses and lifestyles.

ENDOSCOPY

As one of the leading companies in the development of endoscope technology, Fujifilm is constantly elaborating new opportunities to provide top quality products, excellent services and highly customised business solutions in the world of endoscopy.

We regularly set new benchmarks in the industry, for example, with the introduction of the LED Multi Light™ technology providing the innovative observation modes LCI and BLI, with devices for double balloon endoscopy and endoscopic ultrasound systems.

The focus at Fujifilm is firmly on holistic patient care which means that our service portfolio includes expert technical assistance, a comprehensive range of hygiene products and individual consulting.

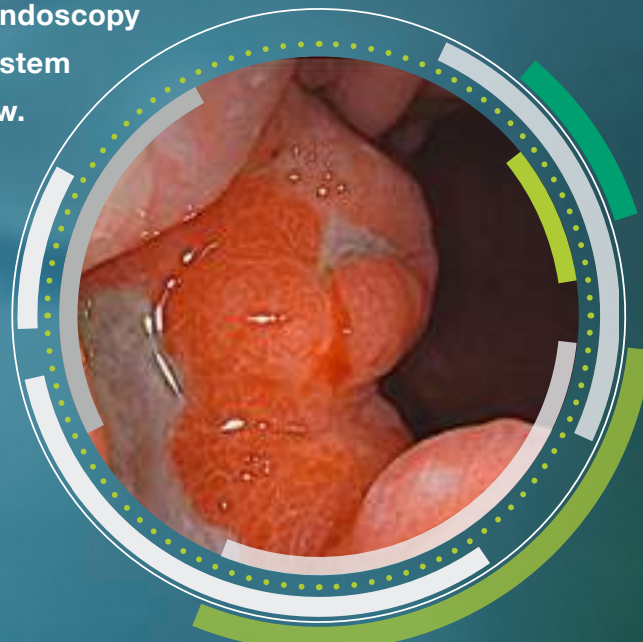
Today Fujifilm operates in around 55 group companies and branches in Europe, employing over 4,000 people engaged in R&D, manufacturing, sales, and service support.



DEVELOPING TECHNOLOGIES BEYOND THE EXPECTED

Fujifilm's comprehensive portfolio of advanced solutions meets a wide range of diagnostic and therapeutic endoscopic requirements and by linking state-of-the-art technologies we can provide you with some unique possibilities. One example is the combination of specialised applications, such as double balloon endoscopy and endoscopic ultrasound, in one complete system which would enable you to streamline your workflow. In addition, the continuous enhancement of imaging technologies ensures high precision and excellent quality.

Our overarching aim is to help to improve the quality of life of people worldwide through the early detection and successful treatment of disease.



White Light



FICE + E-Zoom

SELECTIONATIVE



MULTI LIGHT™ TECHNOLOGY

Optimal illumination using variable LED light intensity.



COLOASSIST TECHNOLOGY

Fujifilm's renowned ColoAssist has been optimised for the 700 series colonoscopes and now includes the Flexibility Adjuster for easier insertion in addition to Advanced Force Transmission and Adaptive Bending.



LCI TECHNOLOGY

Increased contrast in red colour leads to improved detection of lesions and accurate delineation.



DICOM TECHNOLOGY

The goal of the DICOM Standard is to achieve compatibility and improve workflow efficiency between imaging systems and other information systems.



BLI TECHNOLOGY

The combination of special light wavelengths results in improved and accurate contrast imaging.



SMART BEND TECHNOLOGY

Smart Bend allows excellent manoeuvrability and observation through a 210° bending angle. In addition, the smart bending ability and the small bending radius make treatment of difficult-to-reach lesions easier.



CMOS TECHNOLOGY

Noiseless and brilliant image transmission thanks to a CMOS-chip positioned directly in the tip.



MULTI ZOOM TECHNOLOGY

Easy-to-control optical magnification up to 135x in stepwise or continuous magnification modes.



FICE TECHNOLOGY

FICE can enhance slight colour differences such as vascular and mucosal patterns without tissue staining. The procedure digitally selects three wavelengths of light and displays reconstructed images.



ANTI-BLUR FUNCTION

The clearest image among multiple images is automatically selected.



SUPER CCD TECHNOLOGY

The Super CCD and high performance optical system ensures high quality images. It provides brilliant images which can facilitate procedures for detection and treatment of lesions.



CLOSE FOCUS

Close Focus observation up to 2mm supports more precise diagnosis.



HD TECHNOLOGY

Combine equipment displaying this logo to ensure that you view HDTV images on your monitor.



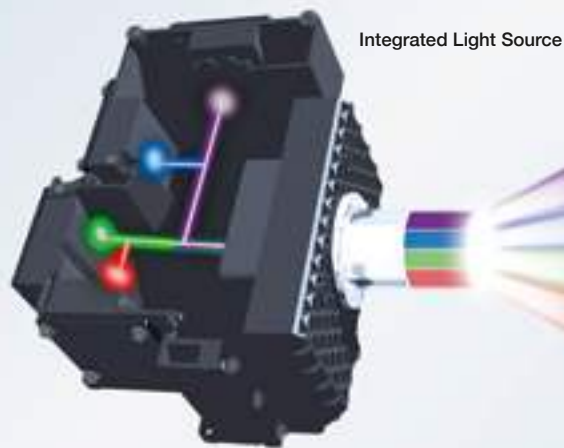
MULTI



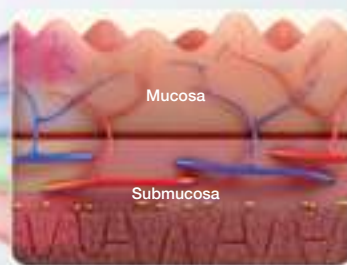
See More. Detect More.

This high performance illumination system is the latest innovation in Fujifilm's medical device portfolio and ensures that the quality of imaging meets the highest standards in brightness and contrast providing the innovative observation modes LCI and BLI. Specifically designed for this illumination system, the ELUXEO™ 700 series of endoscopes featuring Multi Zoom and Freeze function allow for greater differentiation and provide detailed high-resolution imaging for both diagnosis and pre-therapeutic assessment.

OPTIMALTIONARIABLE

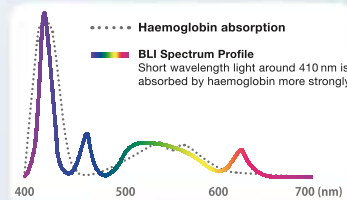


Integrated Light Source

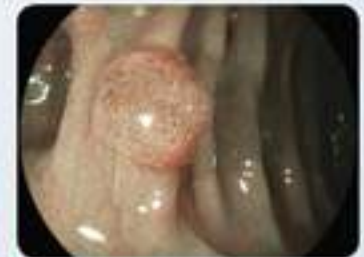


Mucosa

Submucosa



..... Haemoglobin absorption
— BLI Spectrum Profile
Short wavelength light around 410 nm is absorbed by haemoglobin more strongly



BLI (Blue Light Imaging)



White Light

- A high performance spectrum of light is generated from a powerful light source with individual LED light bulbs.

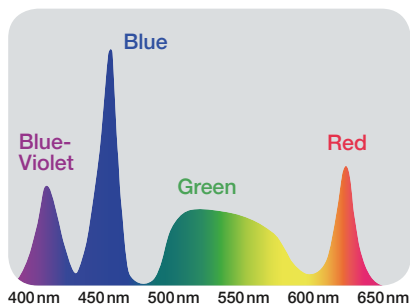
- Enhanced visualisation of haemoglobin, and thus blood vessels, is generated by the high peak intensity of short-wavelength light (blue-violet and blue).
- Specific light spectrum settings targeting the mucosal layers result in improved contrast and higher definition of imaging.

This drawing is for illustration only and not a complete representation.

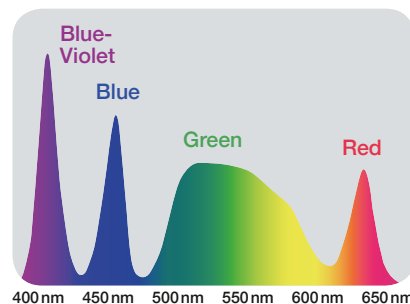
High-intensity illumination based on Multi Light™ technology creates high-quality images with White Light and the observation modes LCI (Linked Colour Imaging) and BLI (Blue Light Imaging). With the involvement of numerous clinical experts, the ideal composition of LEDs for each observation mode has been developed to achieve the optimal results in illumination. With a simple push of a button, you can easily switch between the following observation modes:

OPTIMALTION

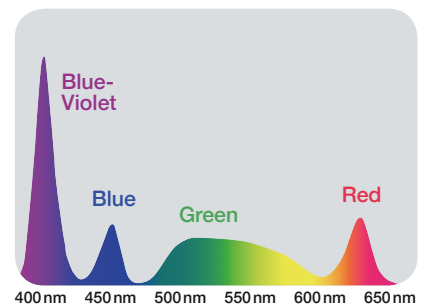
WHITE LIGHT IMAGING



LCI MODE



BLI MODE



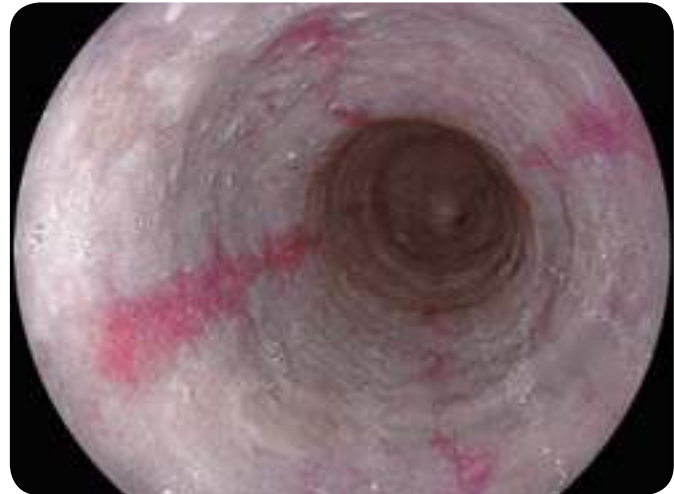
LCI



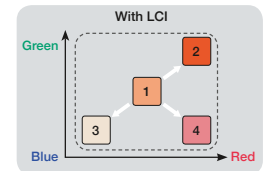
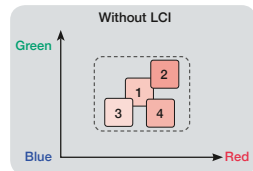
LCI differentiates the red colour spectrum more effectively than White Light imaging thanks to its optimal pre-process composition of light spectrum and advanced signal processing. The increased colour contrast improves detection of lesions or inflammation and results in more accurate delineation



Oesophagus – White Light Imaging



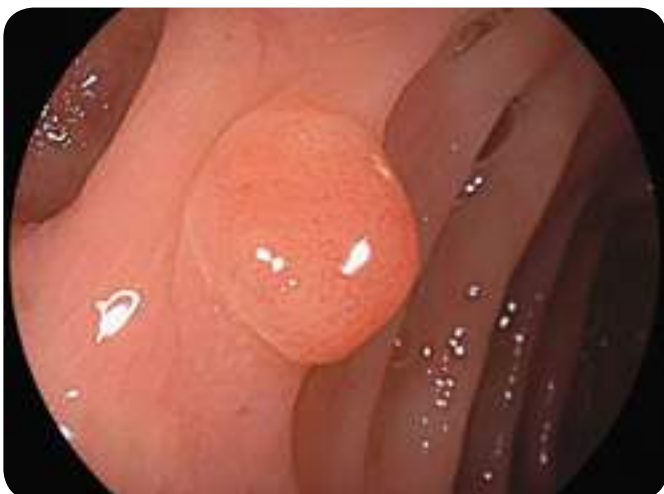
Oesophagus – LCI Mode



BLI



High-intensity contrast imaging with BLI allows superior visualisation of superficial vascular and mucosal patterns. Focussing on the characteristics of short wavelength absorption of haemoglobin (at 410nm) combined with specific white light spectral colours results in improved and accurate contrast imaging.



Colon – White Light Imaging



Colon – BLI Mode

YOUR ACCESS TO **SCIENTIFIC INFORMATION**

BLIPORTAL

Blue Light Imaging Studies & Information

WWW.

B **L** **I** **eu**



Register now to receive the latest updates on endoscopy: www.bli.eu



Latest LCI & BLI Study Results

New BASIC Classification

Training

Newsletter

Expert

Clinicalideos

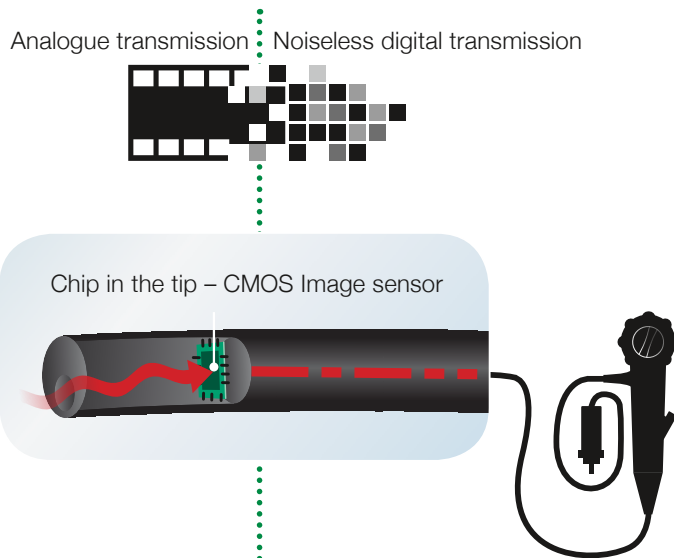




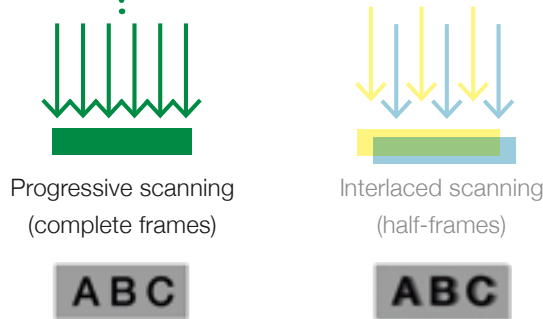
FUJIFILM'S LEADING-EDGE CMOS TECHNOLOGY WITH MEGAPIXEL



With the unique CMOS Chip built directly into the tip of the scope, the signal is digitally transmitted through the device, thus providing outstanding high-resolution imaging. All 760 and 600 endoscopes are equipped with CMOS.



The CMOS Chip is positioned directly in the tip of the scope and transforms the analogue signal into a digital signal at the site of examination. This ensures **noiseless and brilliant image transmission**.



CMOS Technology supports 60 frames progressive scanning technology where complete images are processed, rather than the half-frames processed when using the interlaced scanning method. The result is outstanding high-resolution image quality and smooth moving images with dramatically reduced blurring.



Colon in super high resolution

This drawing is for illustration only and not a complete representation.

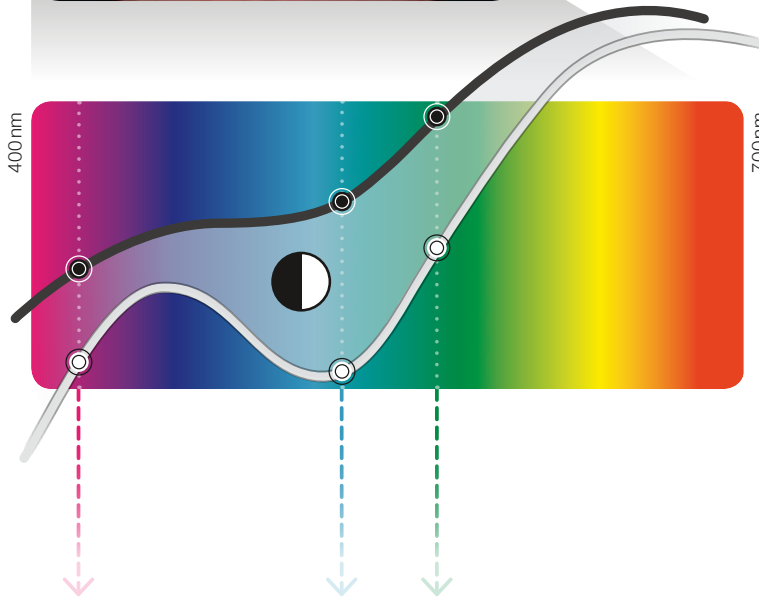
FICE 

Better visibility for detection and diagnosis

FICE – Flexible Spectral Imaging Colour Enhancement – can maximise colour differences such as vascular and mucosal patterns without the need for tissue staining. The procedure digitally selects three wavelengths of the light and displays the reconstructed images. The endoscope switch allows physicians to change between the conventional image and the FICE image in a split second, ensuring an uninterrupted examination with the eyes always concentrated on the monitor.



XENON endoscopy
White Light image
Red wavelength is mostly reflected.



FICE
(Flexible Spectral Imaging Colour Enhancement)

The contrast is enhanced and the vascular pattern is highlighted by focusing on the difference in wavelength reflection of mucosa and blood vessels.

DUAL MODE

Simultaneously displays a FICE image and a White Light image on the same monitor

A dual view of a FICE image and a White Light image on the same monitor allows you to collect more information for examination and diagnosis.



FICE Stomach



MULTI ZOOM

Optical Zoom for precise focusing

The latest Multi Zoom technology enables programming up to 3 magnification modes to realise an easy-to-control zoom endoscopy.

- 2-step Zoom
- 3-step Zoom
- 5-step Zoom

The optical zoom allows a close examination of the mucosa tissue and capillary structures in combination with excellent focusing and orientation during magnification throughout the wide focal plane.

Mode	Magnification setting				
	Normal	Low (about x60)	Middle (about x85)	High (about x100)	Maximum (x135)
2-step Zoom	●	●			
3-step Zoom	●	●	●		
5-step Zoom	●	●	●	●	●
Continuous Zoom	■				

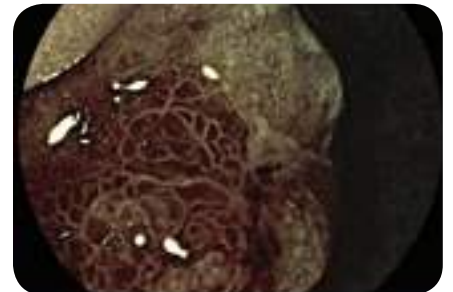
E-ZOOM

Electronic Zoom provides better visibility

E-Zoom images can be provided by pressing the scope button once. Normally, E-Zoom increases noise of an image. The E-Zoom function can be used with the 600 series to produce a FICE image with less noise so that it is possible to observe the detail of surface pattern as well as the vascular pattern.



White Light Stomach



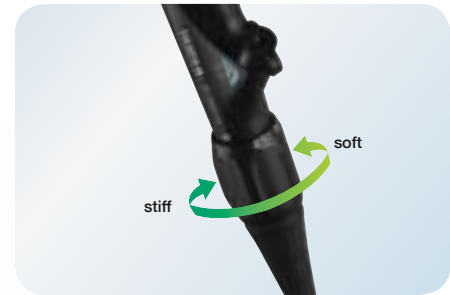
FICE + E-Zoom

COLOASSIST ADJUST

ColoAssist Adjust has been specifically developed for the 760 series colonoscopes. It features the Flexibility Adjuster with different levels of stiffness as well as innovative Advanced Force Transmission and Adaptive Bending for improved manoeuvrability and more patient comfort. EC-760R, EC-760ZP and EC-760P are equipped with ColoAssist Adjust.

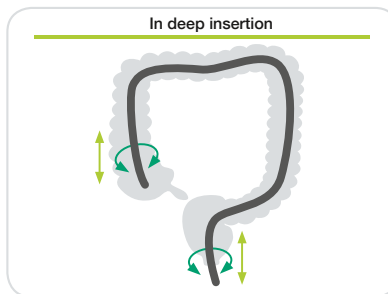
FLEXIBILITY ADJUSTER

The stiffness of the flexible portion of the scope can be easily adjusted according to your preference. This is helpful when inserting the scope into segments such as the sigmoid colon and the transverse colon where the endoscope can more smoothly follow the intestinal tract.



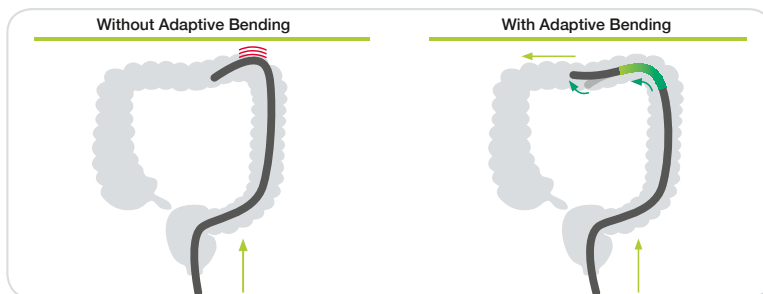
ADVANCED FORCE TRANSMISSION

The flexible portion is designed to transmit the pushing, pulling and rotating movements from the hand to the distal end of the endoscope, which provides enhanced manoeuvrability inside the digestive tract.



ADAPTIVE BENDING

The end of the bending section is soft, allowing the scope to follow the natural contours of the intestinal tract. The flexible bending section has been designed to return more easily to its straight form after passing through the tight curves of the colon.





GASTROENTEROLOGY

ELUXEO™ 700 SERIES ENDOSCOPES



Design Award Winner
ELUXEO™ EC-760ZP-VM / VL



reddot design award
winner 2017

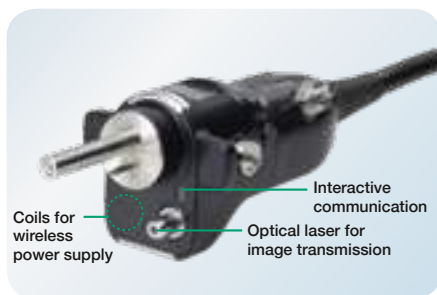


The ELUXEO™ 700 series of Fujifilm scopes with One-Step Connector and easy-to-control G7 grip is designed to lead you efficiently and effectively through your examination.

ONE-STEP CONNECTOR FOR EASY PLUG-IN



The One-Step Connector can be plugged in easily and the 700 series endoscopes are the first to incorporate an integrated wireless power supply that provides high speed transmission of data. The new design helps to simplify the cleaning process and also reduces the potential for accidental damage.



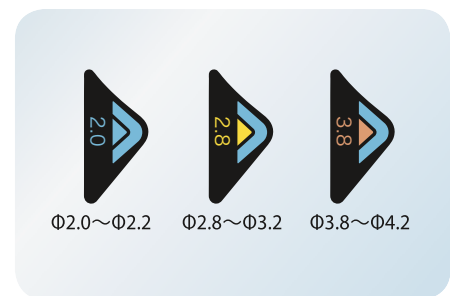
G7 GRIP FOR OPTIMUM COMFORT IN DAILY PRACTICE



In close cooperation with leading endoscopists, Fujifilm has renewed the layout and size of the components of the control portion and repositioned the angulation knobs to increase accessibility from the grip. The G7 grip is designed to have an easy and comfortable feel that optimises performance and minimises stress during clinical procedures.



- 1 Colour of G7 control portion
- 2 Identification colour of working channel size
- 3 Working channel diameter
- 4 Corporate brand logo
- 5 Model No.



Each 700 series endoscope displays the information required to choose compatible accessories, which helps to facilitate on-the-spot decision-making.

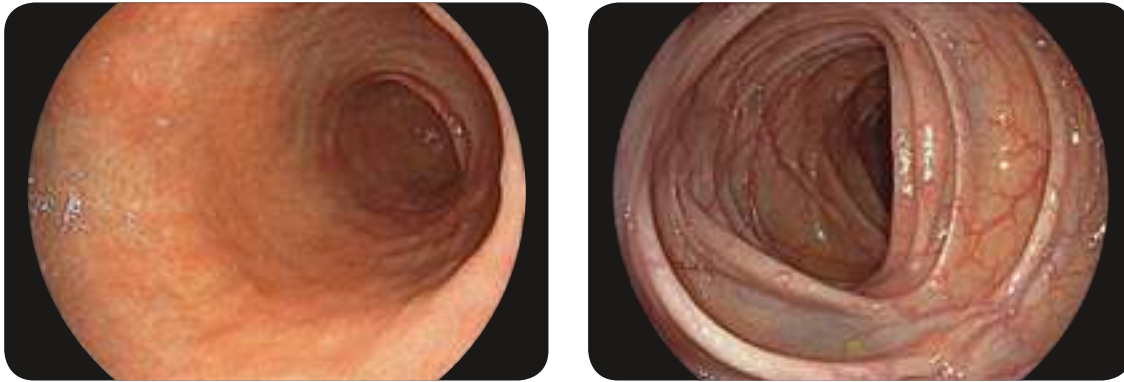


The 700 and 600 series CMOS endoscopes with a full digital processor realise advanced observation and diagnostics.

OVER MEGAPIXEL CMOS IMAGE SENSOR PRODUCING SUPER-HIGH RESOLUTION IMAGE



With over Megapixel CMOS image sensor, 760 and 600 series endoscopes produce super-high resolution images, while the leading-edge CMOS technology realises less noise and brilliant images. The CMOS image sensor can change the analogue signal to digital in the tip of the scope. During transmission, the digital signal is much less affected by noise from outside, enabling advanced observation and diagnosis.



CLOSE FOCUS ENHANCES IMAGING FOR DIAGNOSIS



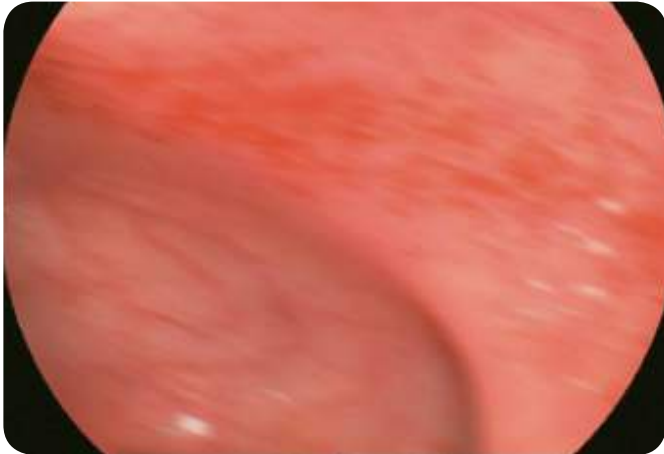
The high performance optical system enhances Close Focus observation capability **up to 2mm**. The focus at the edges of an image has been improved, minimising distortion in observation of a lumen. The combination of the Megapixel CMOS image sensor and the high performance optical system assists various observations ranging from close-up to distant views.



ANTI-BLUR FUNCTION



This function extracts the best still image from multiple images to offer the sharpest and clearest every time.



Freezing the image during the examination:
A sequence of images is always kept in the background



Automatic selection and display of the sharpest image

WATER JET FUNCTION



The gastroscope and colonoscope both feature a water jet function which aids visualisation for both diagnostic and therapeutic procedures.



AUTO PHOTOMETRIC CONTROL

The automatic photometric mode optimally adjusts the lighting in accordance with the positioning of the endoscope, providing you with a well-balanced picture, whether close-up or distant focusing, so you always get optimally illuminated images.*



Distant focus

* Available with the 700, 600 and 500 series endoscopes.



Close Focus



UPPER

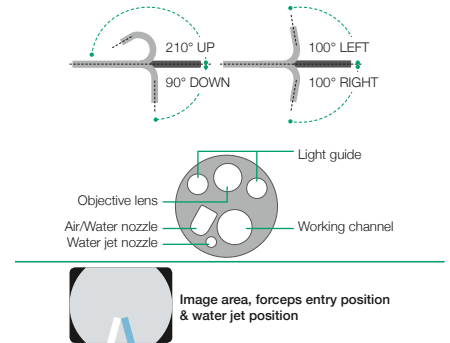
ELUXEO™ VIDEO GASTROSCOPE EG-760R



This routine gastroscope from the ELUXEO™ 700 series is equipped with CMOS technology and provides HD images and videos for daily practice. Close Focus allows observation from as little as 2 mm in depth.



Field of view	140°
Observation range	2–100 mm
Bending capability	Up 210°/Down 90° Right 100°/Left 100°
Distal end diameter	9.2 mm
Flexible portion diameter	9.3 mm
Working channel diameter	2.8 mm
Working length	1,100 mm
Total length	1,400 mm



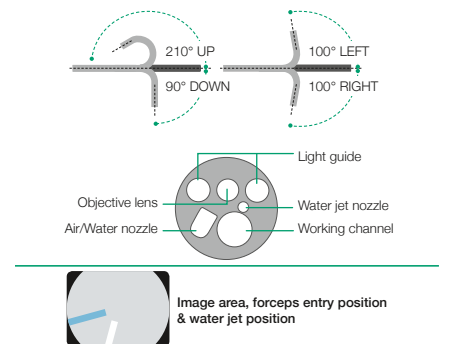
ELUXEO™ VIDEO GASTROSCOPE EG-760Z Optical Magnification



This zoom gastroscope features the well-known 135x Multi Zoom which leads to clear and more detailed visualisation, allowing deeper analysis of mucosal structures. It has a small bending radius and similar functionality to the routine gastroscope including all features.

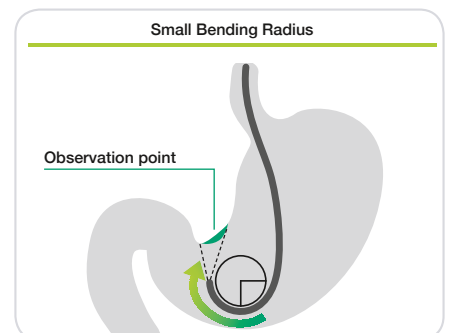
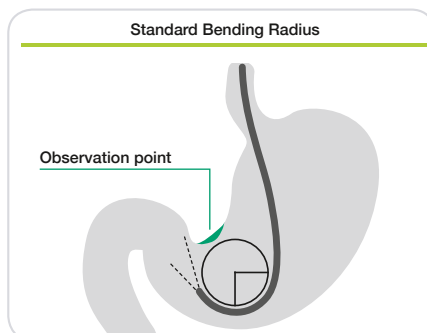


Field of view	Normal 140°/Close 56°
Observation range	1.5–100 mm Normal 3–100 mm Close 1.5–2.5 mm
Bending capability	Up 210°/Down 90° Right 100°/Left 100°
Distal end diameter	9.9 mm
Flexible portion diameter	9.8 mm
Working channel diameter	2.8 mm
Working length	1,100 mm
Total length	1,400 mm



SMALL

The EG-760Z features a tight bending section radius with improved angulation. This allows the endoscope to approach the targeted observation point and lesion more easily and with less effort.



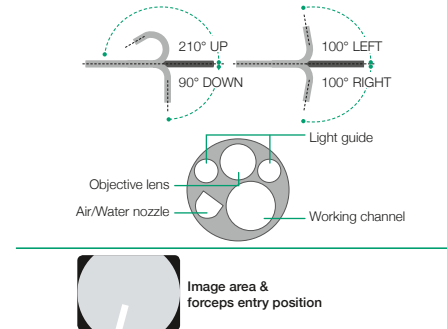
NEW **ELUXEO™ VIDEO GASTROSCOPE EG-740N UltraSlim Type**



This ultraslim gastroscope with a distal end diameter of 5.8mm is particularly suited to paediatric use and for cases featuring stenosis. The slim distal end also supports a soft transnasal insertion and reduces patient discomfort.



Field of view	140°
Observation range	3–100 mm
Bending capability	Up 210°/Down 90° Right 100°/Left 100°
Distal end diameter	5.8 mm
Flexible portion diameter	5.9 mm
Working channel diameter	2.4 mm
Working length	1,100 mm
Total length	1,400 mm



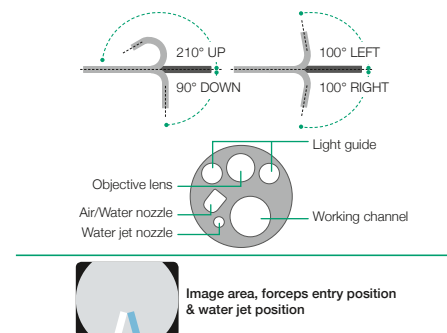
ELUXEO™ VIDEO GASTROSCOPE EG-760CT Therapeutic Type



This gastroscope from the ELUXEO™ 700 series is equipped with a large 3.8mm working channel that is especially suitable for therapeutic procedures compared to the standard gastroscope EG-760R with a working channel of 2.8 mm. In addition to therapeutic use, the gastroscope features LCI for improved detection and BLI for characterising lesions, making it an excellent gastroscope for observation.

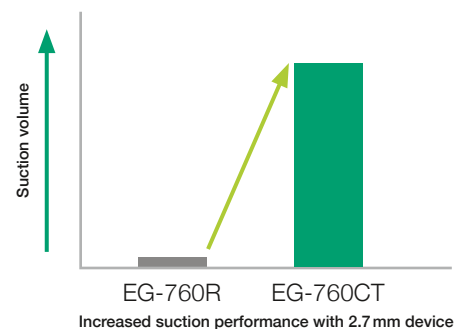
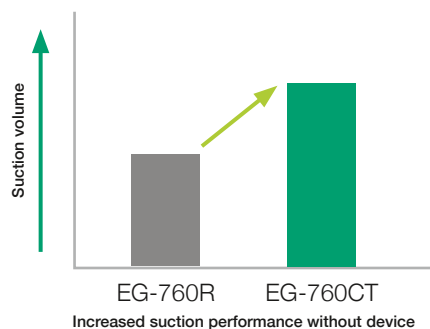


Field of view	140°
Observation range	2–100 mm
Bending capability	Up 210°/Down 90° Right 100°/Left 100°
Distal end diameter	10.5 mm
Flexible portion diameter	10.8 mm
Working channel diameter	3.8 mm
Working length	1,100 mm
Total length	1,400 mm



ENLARGED

The 3.8 mm working channel has a higher suction capacity compared to other gastroscopes, especially when the therapeutic accessory is inserted into the working channel.



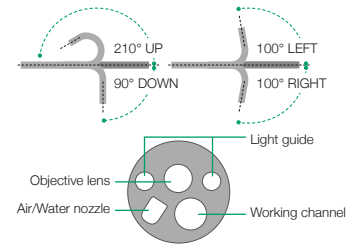


UPPER

NEW ELUXEO™ Lite VIDEO GASTROSCOPE EG-720R



Field of view	140°
Observation range	2–100 mm
Bending capability	Up 210° / Down 90° Right 100°/Left 100°
Distal end diameter	9.2 mm
Flexible portion diameter	9.3 mm
Working channel diameter	2.8 mm
Working length	1,100 mm
Total length	1,400 mm

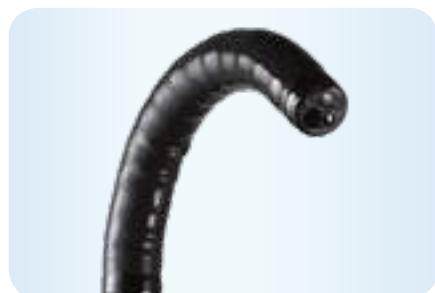


LOWER

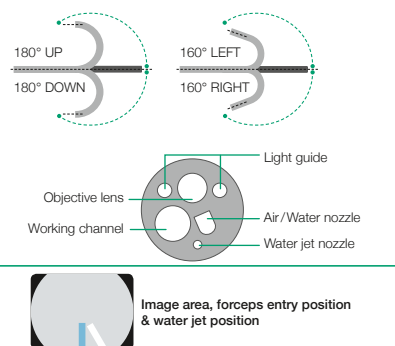
ELUXEO™ VIDEO COLONOSCOPE EC-760R-VM



With a wide field of view of 170° as well as a large working channel diameter of 3.8mm, this is the ultimate routine colonoscope. It features the G7 grip and the Flexibility Adjuster. In addition, it has a slim diameter of 12.0mm and includes a water jet function and CMOS technology.



Field of view	170°
Observation range	2–100mm
Bending capability	Up 180°/Down 180° Right 160°/Left 160°
Distal end diameter	12.0mm
Flexible portion diameter	12.0mm
Working channel diameter	3.8mm
Working length	1,330/1,520/1,690mm
Total length	1,650/1,840/2,010mm



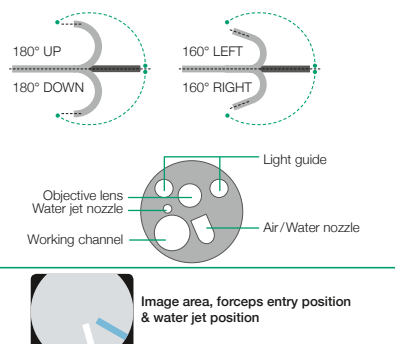
ELUXEO™ VIDEO COLONOSCOPE EC-760ZP-VM



The slim zoom colonoscope features the brilliant and easy-to-operate Multi Zoom with 135x maximum magnification. Together with BLI, exceptional details of the mucosal and vascular patterns become visible. Like the routine scope, it features the full range of functionalities including flexible adjustment even with the slim diameter of 11.8mm.



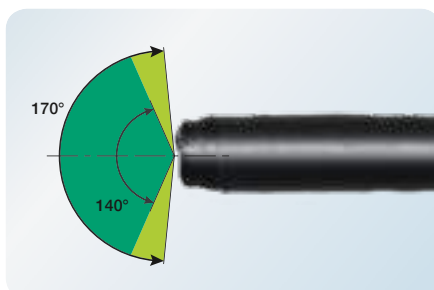
Field of view	Normal 140° / Close 56°
Observation range	1.5–100mm Normal 3–100mm Close 1.5–2.5mm
Bending capability	Up 180°/Down 180° Right 160°/Left 160°
Distal end diameter	11.7mm
Flexible portion diameter	11.8mm
Working channel diameter	3.2mm
Working length	1,330/1,690mm
Total length	1,650/2,010mm



WIDE 170° FIELD OF VIEW



With video colonoscope EC-760R, a wide 170° field of view is available. Even areas that are hard to observe, such as the reverse side of folds, can be visualised more easily.





LOWER

NEW

ELUXEO™ VIDEO COLONOSCOPE EC-760P-VM

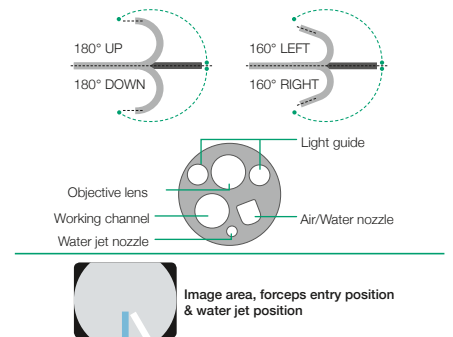
Paediatric Type



This ultraslim colonoscope from the ELUXEO™ 700 series has a distal end diameter of only 11.1 mm and is therefore especially suitable for the paediatric and therapeutic use. A wide 170° field of view enables a visualisation even in hard-to-observe areas. It features the G7 grip and the Flexibility Adjuster for easier insertion.



Field of view	170°
Observation range	2–100mm
Bending capability	Up 180°/Down 180° Right 160°/Left 160°
Distal end diameter	11.1 mm
Flexible portion diameter	11.5 mm
Working channel diameter	3.2 mm
Working length	1,330/1,690 mm
Total length	1,650/2,010 mm

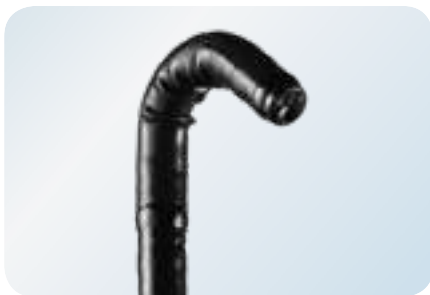


ELUXEO™ VIDEO COLONOSCOPE EC-740TM

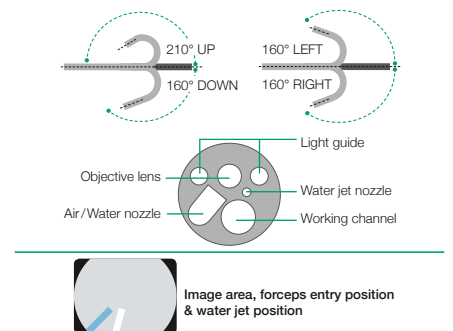
Slim & Treatment Type



This slim colonoscope is equipped with Advanced Force Transmission, 210° up-angulation and a G7 grip that supports excellent manoeuvrability. It is especially suitable for more challenging anatomies and paediatric use, where it can be applied in cases of stenosis, severe inflammation, or anatomical adhesion. With the additional observation modes – LCI for improved detection and BLI for characterising lesions – this provides an excellent colonoscope for both observation and therapeutic procedures.



Field of view	140°
Observation range	3–100mm
Bending capability	Up 210°/Down 160° Right 160°/Left 160°
Distal end diameter	9.8 mm
Flexible portion diameter	10.7 mm
Working channel diameter	3.2 mm
Working length	1,330/1,690 mm
Total length	1,650/2,010 mm



SMART BEND



Smart Bend provides excellent manoeuvrability, observation and therapeutic treatments from 210° up angulation and a small bending radius.

Lesions which are difficult to reach can be easily treated due to the smart bending ability as well as the small bending radius.



Smart Bend colonoscope

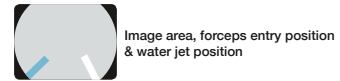
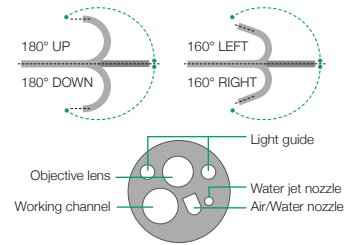


Colonoscope without Smart Bend

NEW **ELUXEO™ Lite** VIDEO COLONOSCOPE **EC-720RM**



Field of view	170°
Observation range	2–100 mm
Bending capability	Up 180°/Down 180° Right 160°/Left 160°
Distal end diameter	12.8 mm
Flexible portion diameter	12.8 mm
Working channel diameter	3.8 mm
Working length	1,330/1,520/1,690 mm
Total length	1,630/1,820/1,990 mm





600 SERIES ENDOSCOPES

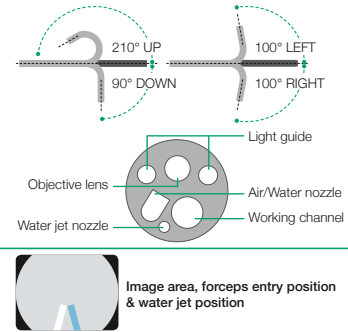
600 series endoscopes feature leading-edge optical technologies to provide a clear and bright endoscopic image for easy and accurate diagnostics.



VIDEO GASTROSCOPE **EG-600WR**



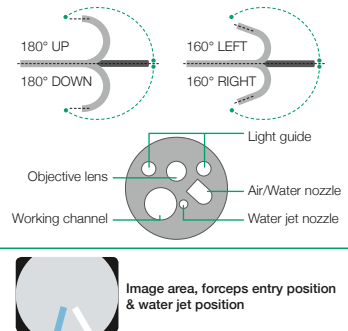
Field of view	140°
Observation range	2–100 mm
Bending capability	Up 210°/Down 90° Right 100°/Left 100°
Distal end diameter	9.2 mm
Flexible portion diameter	9.3 mm
Working channel diameter	2.8 mm
Working length	1,100 mm
Total length	1,400 mm



VIDEO COLONOSCOPE **EC-600W-M**



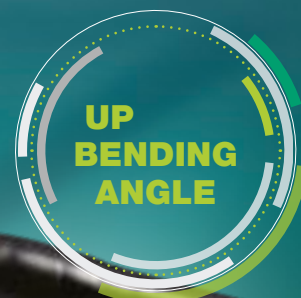
Field of view	140°
Observation range	2–100 mm
Bending capability	Up 180°/Down 180° Right 160°/Left 160°
Distal end diameter	12.0 mm
Flexible portion diameter	12.0 mm
Working channel diameter	3.8 mm
Working length	1,330/1,520/1,690 mm
Total length	1,630/1,820/1,990 mm





580 SERIES ENDOSCOPES

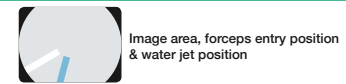
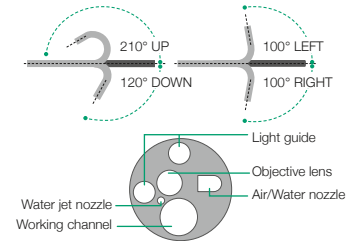
The 580 series by Fujifilm stands out for its wide range of special features for various purposes. The unique specifications include ultraslim and smart bending types as well as the double balloon system.



VIDEO GASTROSCOPE **EG-580RD** Smart Bend Treatment Type



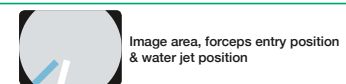
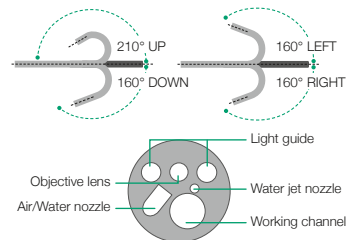
Viewing direction	0° (Forward)
Field of view	140°
Observation range	3–100 mm
Bending capability	Up 210° / Down 120° Right 100° / Left 100°
Distal end diameter	9.8 mm
Flexible portion diameter	9.8 mm
Working channel diameter	3.2 mm
Working length	1,100 mm
Total length	1,400 mm



VIDEO COLONOSCOPE **EC-580RD-L** Smart Bend Slim & Treatment Type



Field of view	140°
Observation range	3–100 mm
Bending capability	Up 210° / Down 160° Right 160° / Left 160°
Distal end diameter	9.8 mm
Flexible portion diameter	10.5 mm
Working channel diameter	3.2 mm
Working length	1,690 mm
Total length	1,990 mm

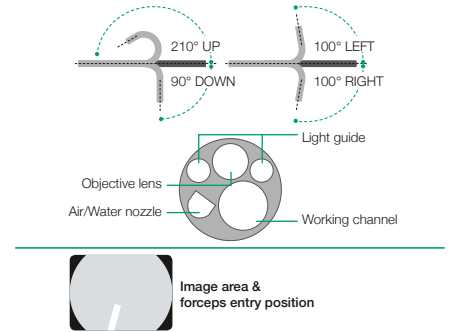




VIDEO GASTROSCOPE EG-580NW2 Ultraslim Type

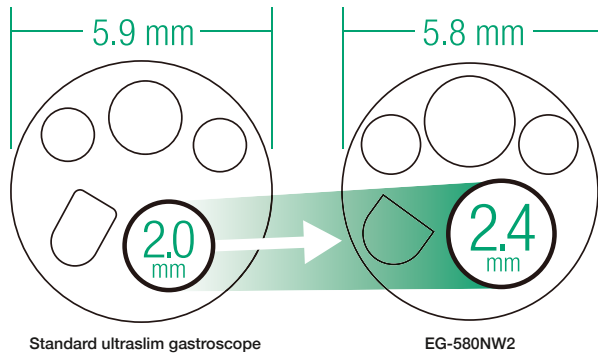


Field of view	140°
Observation range	3–100 mm
Bending capability	Up 210° / Down 90° Right 100° / Left 100°
Distal end diameter	5.8 mm
Flexible portion diameter	5.9 mm
Working channel diameter	2.4 mm
Working length	1,100 mm
Total length	1,400 mm



ENLARGED WORKING CHANNEL FOR IMPROVED SUCTION CAPACITY FOR THE ULTRASLIM GASTROSCOPE

The 2.4 mm working channel of the EG-580NW2 realises a higher suction ability compared to other ultraslim gastroscopes, especially when the therapeutic accessory is inserted into the working channel.



NEW

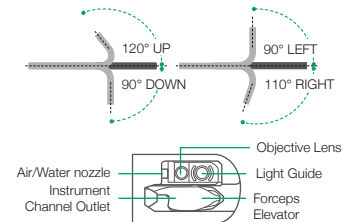
DUODENOSCOPE ED-580XT



With improved wire locking G-Lock and greater elevation force. The ED-580XT has the G7 control portion which has a rounded surface design to fit in the hand. Its layout makes intuitive operation possible.



Viewing direction	95° (retro-viewing 5°)
Field of view	100°
Observation range	4–60 mm
Distal end diameter	13.1 mm
Bending capability	Up 120° / Down 90° Left 90° / Right 110°
Working length	1,250 mm
Total length	1,550 mm
Insertion tube diameter	11.3 mm
Minimum diameter of instrument channel	4.2 mm



G-Lock

IMPROVED TREATMENT CAPABILITY

Incorporated into the distal tip of the ED-580XT, the G-Lock contains the forceps elevator and the contact section, enabling the guidewire to be simply and securely fixed into position by using the forceps elevator. In addition, the specially designed round shaped forceps elevator reduces the risk of guidewire damage. The inner tube of the instrument channels uses an optimised material to enable a device to be inserted smoothly, supporting rapid device exchange. Designed to work in harmony with the endoscopist, the new G-Lock and low friction instrument channel support efficiency and ease of use during ERCP procedures.



EASY AND EFFECTIVE DISTAL END CLEANING

Easier Brushing Access – Easier Cleaning

The single-use distal end cap permits easier brushing access to the distal end of the endoscope. In addition, the elevator mechanism is sealed to allow easier cleaning.





DOUBLE SYSTEM

By developing the double balloon endoscopy, Fujifilm made it possible for the first time to examine and treat the complete small intestine. The two-balloon system is revolutionary, providing an unparalleled level of detail and is, to this day, the gold standard in examination of the small intestine. It is also commonly used in ERCPs with altered conditions post-surgery.



PUSH & SYSTEM

3.2 mm

Enlarged working channel for efficient treatment

DOUBLE BALLOON ENDOSCOPY

ONE-TOUCH CONNECTOR

DOUBLE BALLOON ENDOSCOPY

Double balloon endoscopy is a revolutionary technique that allows the whole length of the small intestine to be visualised, opening doors to new therapeutic interventions.

Fujifilm developed the DBE system to meet the clinical needs for more precise and efficient diagnoses and treatment.



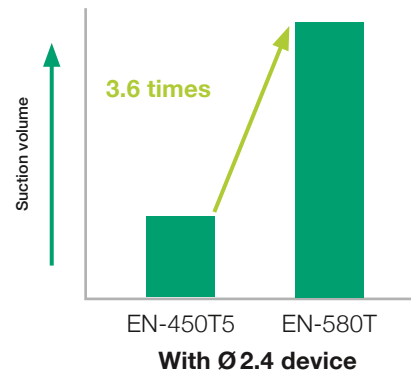
Oral insertion (small intestine)



Anal insertion (small intestine)

WORKING CHANNEL WITH 3.2MM DIAMETER

The enlarged 3.2mm working channel suits procedures such as hemostasis and balloon dilation. It enables blood or mucus to be aspirated while a therapeutic device is inserted, making hemostasis quicker. The large working channel is also designed for easier insertion and removal of a balloon catheter before and after dilation of stricture.



The 3.2mm working channel provides greater suction performance than conventional models.
(According to Fujifilm data)

ESPECIALLY DESIGNED ONE-TOUCH CONNECTOR AND RELOCATED BALLOON AIR FEED INLET FOR BETTER OPERABILITY



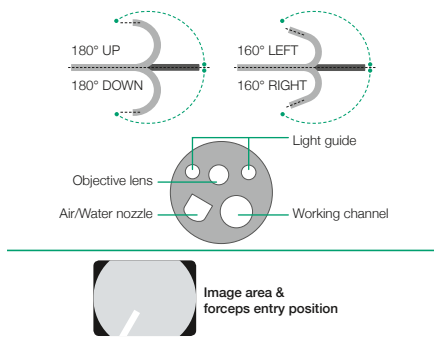
The balloon air feed inlet has been relocated from the control portion to the connector portion, creating a better examination environment. Also, a one-touch connector especially designed for the balloon air feed inlet on the endoscope is provided, making the preparation simpler.



ENTEROSCOPE **EN-580T** Therapeutic Type



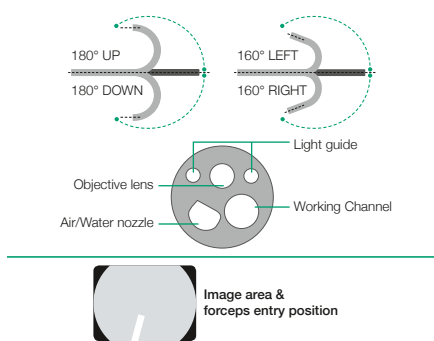
Viewing direction	0° (Forward)
Field of view	140°
Observation range	2–100mm
Bending capability	Up 180° /Down 180° Right 160° /Left 160°
Distal end diameter	9.4mm
Flexible portion diameter	9.3mm
Working channel diameter	3.2mm
Working length	2,000mm
Total length	2,300mm



ENTEROSCOPE **EN-580XP** Slim Type



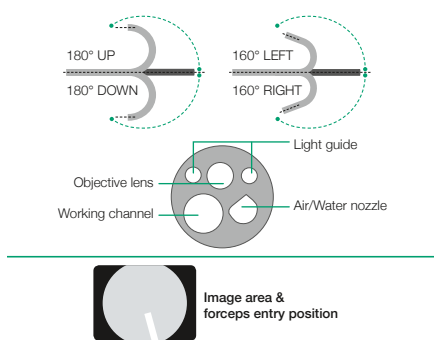
Field of view	140°
Observation range	2–100mm
Bending capability	Up 180° /Down 180° Right 160° /Left 160°
Distal end diameter	7.5mm
Flexible portion diameter	7.7mm
Working channel diameter	2.2mm
Working length	2,000mm
Total length	2,300mm



„SHORT“ DOUBLE-BALLOON ENDOSCOPE **EI-580BT**



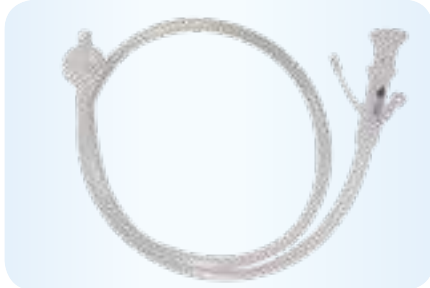
Viewing direction	0° (Forward)
Field of view	140°
Observation range	2–100mm
Bending capability	Up 180° /Down 180° Right 160° /Left 160°
Distal end diameter	9.4mm
Flexible portion diameter	9.3mm
Working length	1,550mm
Total length	1,850mm
Working channel diameter	3.2mm



OVERTUBE **TS-1114B**



Silicone overtube, sterile, single-use, with expiration date (contains silicone rubber)



Overtube model	TS-1114B	TS-1214B	TS-1314B
Applicable endoscopes	EN-580XP	EN-450P520	EN-450T5 EN-580T

OVERTUBE **TS-12140**

Latex overtube, sterile, single use, with expiration date (contains natural rubber latex)



Overtube model	TS-12140	TS-13140	TS-13101
Applicable endoscopes	EN-450P520	EN-450T5 EN-580T	EC-450BI5 EI-580BT

CONNECTION TUBE **TY-400-500**



TY-400:

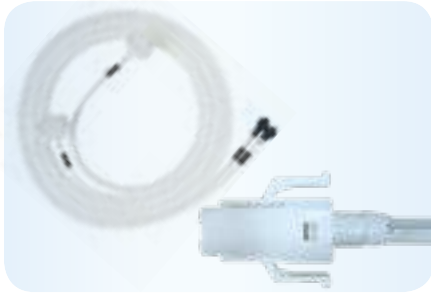
Connection tube kit for silicone overtube, PB-20/30 and 450 series – exchange once every month or once every 10 cases

TY-500:

Connection tube kit for silicone overtube, PB-20/30 and endoscopes EN-580T & EN-580XP – exchange once every month or once every 10 cases



CONNECTION TUBE **TY-04-06**



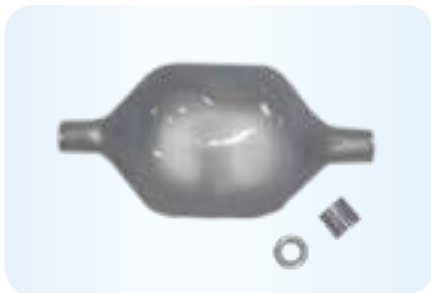
TY-04:

Connection tube kit for latex overtube, PB-20/30 and 450 series – exchange once every month or once every 10 cases

TY-06:

One-touch-connector set (2 tubes) for latex overtube, PB-20/30 and 500 series

BALLOON **BS-4**



Endoscope balloon Ø35mm, single-use, with expiration date (contains silicone rubber)
(10 pcs balloon + 20 pcs rubber band/pack)

ST-10 is needed to attach

BALLOON **BS-2**



Endoscope balloon Ø35mm, single-use, with expiration date (contains natural rubber latex)

(10 pcs balloon + 20 pcs rubber band/pack)

BALLOON CONTROL UNIT **PB-30**

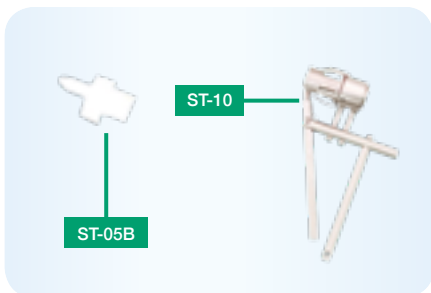
To be used to control the pressures inside the balloons which are inflated and deflated during DBE examinations



Maximum flow rate of pump	170 ml ± 50 ml / 10 sec.
Set pressure accuracy	± 2 kpa
Set pressure of balloon	5.6 kpa
Weight	7.0 kg (Main unit), 0.4 kg (Remote switch)
Power	AC100-240V 50/60 Hz 0.8A
Dimensions (W x H x D)	145 x 170 x 410 mm

BALLOON SETTING TOOLS **ST-05B-10**

To fix the balloon and the rubber bands





530 SERIES ENDOSCOPES

Natural colour reproduction, a high resolution Super CCD chip for excellent image quality and good bending operability are just three of the many advantages presented by the 530 series endoscope.

The endoscopes can be run with the ELUXEO™ VP-7000 processor, the ELUXEO™ Lite EP-6000 or the EPX-3500 HDTV processor in Full HD quality.



**IMPROVED
OPERABILITY**



**SUPER
CCD**

Excellent image quality

Fujifilm's Super CCD, which has been exclusively developed for the endoscope, is built in, to provide clear images.



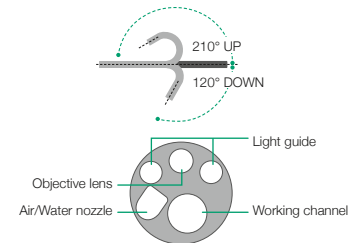
VIDEO GASTROSCOPE **EG-530NP** Ultralim Type



The EG-530NP gastroscop is slimmed down as much as is possible providing a 4.9mm distal end (5.1 mm in the flexible portion) which immensely supports a soft transnasal insertion. This ultraslim endoscope is also equipped with dual light guides and a 2.0mm working channel.



Viewing direction	0° (Forward)
Field of view	120°
Observation range	3–100 mm
Bending capability	Up 210° / Down 120°
Distal end diameter	4.9 mm
Flexible portion diameter	5.1 mm
Working channel diameter	2.0 mm
Working length	1,100 mm
Total length	1,460 mm



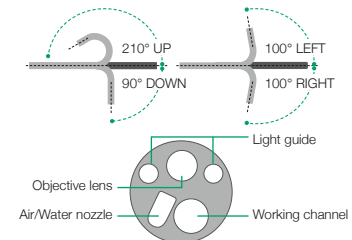
VIDEO GASTROSCOPE **EG-530WR**



The EG-530WR with a wide field of view of 140° provides exceptional visualisation. With the working channel of 2.8 mm, it is a standard endoscope producing high quality images, and is highly suited for both biopsies and treatment.



Viewing direction	0° (Forward)
Field of view	140°
Observation range	4–100 mm
Bending capability	Up 210° / Down 90° Right 100° / Left 100°
Distal end diameter	9.4 mm
Flexible portion diameter	9.3 mm
Working channel diameter	2.8 mm
Working length	1,100 mm
Total length	1,400 mm





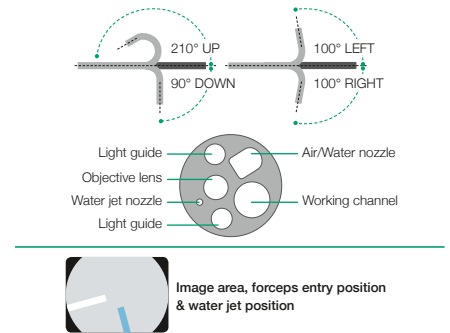
VIDEO GASTROSCOPE **EG-530CT** Therapeutic Treatment



With the working channel as wide as 3.8mm, EG-530CT's distal end is as slim as 10.8mm in diameter. A water jet function is incorporated to support therapeutic interventions.



Viewing direction	0° (forward)
Field of view	140°
Observation range	3–100mm
Bending capability	Up 210°/Down 90° Right 100°/Left 100°
Distal end diameter	10.8mm
Flexible portion diameter	10.8mm
Working channel diameter	3.8mm
Working length	1,100mm
Total length	1,400mm



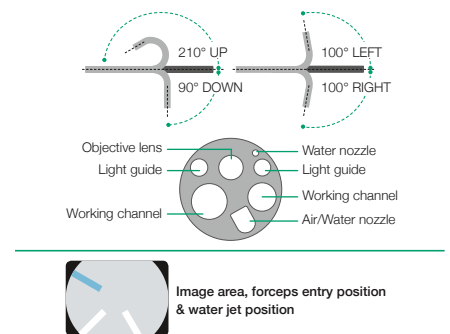
VIDEO GASTROSCOPE **EG-530D** Therapeutic Treatment



EG-530D is an endoscope for treatment of the upper GI tract, with two working channel, 3.8mm and 2.8mm, and a distal end as slim as 11.5mm. A water jet function is also incorporated for use in various treatment methods during endoscopy.



Viewing direction	0° (forward)
Field of view	140°
Observation range	3–100mm
Bending capability	Up 210°/Down 90° Right 100°/Left 100°
Distal end diameter	11.5mm
Flexible portion diameter	11.5mm
Working channel diameter	3.8mm/2.8mm
Working length	1,090mm
Total length	1,405mm
Water jet	Equipped



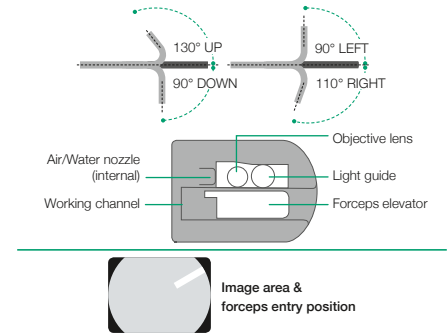
VIDEO DUODENOSCOPE **ED-530XT8** Therapeutic Treatment



The structure of the distal end bending and flexible portion is changed for improved operability during examination and treatment.



Viewing direction	98° (8° rearward)
Field of view	100°
Observation range	4–60 mm
Distal end diameter	13.1 mm
Flexible portion diameter	11.5 mm
Bending capability	Up 130°/Down 90° Right 110°/Left 90°
Working length	1,250 mm
Total length	1,550 mm
Working channel diameter	4.2 mm





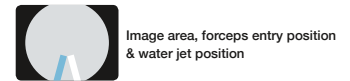
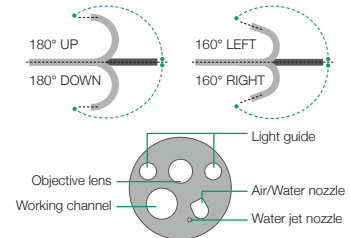
VIDEO COLONOSCOPE EC-530WM3



With a wide field of view of 140°, these lower GI tract endoscopes offer a greater resolution. The ColoAssist II design facilitates improved insertion capability.



Viewing direction	0° (Forward)
Field of view	140°
Observation range	3–100mm
Bending capability	Up 180°/Down 180° Right 160°/Left 160°
Distal end diameter	12.8mm
Flexible portion diameter	12.8mm
Working channel diameter	3.8mm
Working length	1,330/1,520/1,690mm
Total length	1,630/1,820/1,990mm



VIDEO COLONOSCOPE EC-530MP

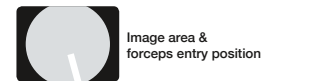
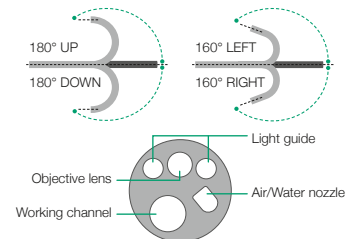
Slim Type



These are slim-type colonoscopes with a distal end of 11.0mm. While these two slimmed-down endoscopes have improved insertability, they retain a 3.2mm working channel to accommodate various treatment methods.



Viewing direction	0° (Forward)
Field of view	140°
Observation range	3–100mm
Bending capability	Up 180°/Down 180° Right 160°/Left 160°
Distal end diameter	11.0mm
Flexible portion diameter	11.1mm
Working channel diameter	3.2mm
Working length	1,330/1,690mm
Total length	1,630/1,990mm



VIDEO COLONOSCOPE EC-530DM

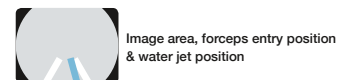
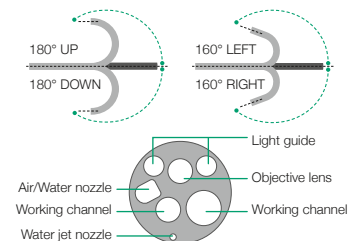
Therapeutic Treatment



These lower GI tract endoscopes have two working channels (3.8mm and 2.8mm), especially useful for treatments such as EMR.



Viewing direction	0° (Forward)
Field of view	140°
Observation range	3–100mm
Bending capability	Up 180°/Down 180° Right 160°/Left 160°
Distal end diameter	12.8mm
Flexible portion diameter	12.8mm
Working channel diameter	3.8/2.8mm
Working length	1,330/1,690mm
Total length	1,645mm/2,005mm



VIDEO SIGMOIDOSCOPE **ES-530WE**



ES-530WE is a sigmoidoscope with an effective length of 790 mm. The working channel diameter is 3.8 mm, and it is equipped with a water jet function.



Viewing direction	0° (Forward)
Field of view	140°
Observation range	3–100 mm
Bending capability	Up 180°/Down 180° Right 160°/Left 160°
Distal end diameter	12.8 mm
Flexible portion diameter	12.8 mm
Working channel diameter	3.8 mm
Working length	790 mm
Total length	1,090 mm

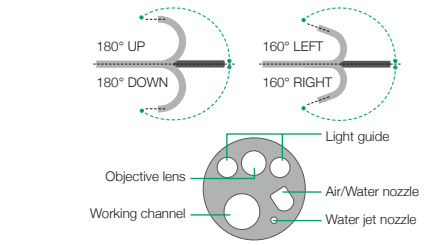


Image area, forceps entry position & water jet position



VIDEO PROCESSORS AND LIGHT SOURCES

Video processor technology from Fujifilm provides you with the best processor for your application at all times – Either the high-end video processor ELUXEO™ 7000 system equipped with LCI and BLI observation modes for demanding examinations, the video processor ELUXEO™ Lite EP-6000 with built-in LED Light source or the standard

EPX-3500HD, also featured with HDTV and antiblur function. All models offer digital image processing and video interfaces. With ergonomic and intuitive user controls, these video processors help to save valuable time and to facilitate more comfortable examinations.

ELUXEO™ Lite HD Full HD endoscopy



EPX-3500HD HD Full HD endoscopy



ELUXEO™ 7000 HD Full HD endoscopy

Design Award Winner
ELUXEO™ BL-7000 and VP-7000

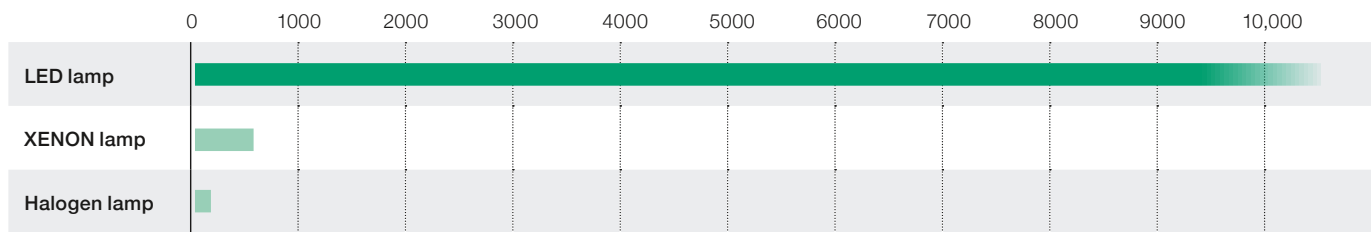




4-LED LIGHT SOURCE WITH HIGH DURABILITY **BL-7000**

To achieve the highest standards, the eco-friendly ELUXEO™ 7000 system features the innovative 4-LED light source, which is outstanding in terms of longevity and low energy consumption. The LED light source reduces time-consuming and frequent changes of light bulbs. The average life expectancy of LED lights is 10,000 hours.

Light source	4-LED
Air supply pump	High, Mid, Low, Off
Power rating	100–240V 50/60Hz 1.2–0.7A
Dimensions (W x H x D)	390 x 155 x 485mm (including projection)
Weight	12.0kg
Optical radiation safety	Class 1 LED product



Life expectancy in hours based on Fujifilm's recommended conditions

HIGH PERFORMANCE VIDEO PROCESSOR **VP-7000**



The ELUXEO™ video processor VP-7000 enables you to make use of the many features provided by Fujifilm's wide range of scopes along with the innovative 4-LED illumination system and its innovative visualisation modes LCI and BLI. It is also compatible with the 600 and 500 series of scopes. The processor creates high quality images and videos displayed in full HD on the monitor. Automatic back-up mode for data storage is integrated and the processor is also DICOM compatible.



Video Processor VP-7000

Light Source BL-7000

Compatible scopes	700/600/500 series
Output	DVI-D x2, DVI-I x1, HD-SDI x2, RGB-TV x1, S VIDEO x1, VIDEO x1
Input	1 channel PoP
Internal memory	4 GB
External memory	USB Flash Drive
Power rating	100–240V 50/60HZ 0.8–0.5A
Dimensions (W x H x D)	390 x 110 x 485mm (including projection)
Weight	9.0kg



ELUXEO™ Lite

NEW

VIDEO PROCESSOR WITH BUILT-IN LED LIGHT SOURCE **EP-6000**



The ELUXEO™ Lite EP-6000 combines a reliable 3-LED light source with a processor that enables you to make use of the many features provided by Fujifilm's wide range of scopes. Combined with the 700 series the innovative visualisation modes LCI (Linked Colour Imaging) and BLI (Blue Light Imaging) are available.

Due to the use of economical LED lamps with a long durability this system is very eco-friendly. It is also compatible with the 600 and 500 series of scopes. The ELUXEO™ Lite EP-6000 creates quality images and videos displayed in full HD on the monitor. Automatic back-up mode for data storage is integrated and the processor is also DICOM compatible.

Available observation modes

	White Light	BLI	LCI	FICE
700 system scopes	●	●	●	●
500 / 600 system scopes	●			●



Light source	3-LED
Air supply pump:	High, Mid, Low, Off
Compatible scopes	760, 740, 720, 600, 580, 530 series*
Output	DVI-D x2, RGB-TV x1, S VIDEO x1, VIDEO x1
Internal memory	4GB
External memory	USB Flash Drive
Power rating	100–240V 50/60HZ 2.0–1.1A
Dimensions (W x H x D)	395 x 210 x 485 mm (including projection)
Weight	15.0kg
Optical radiation safety	Class 1 LED product

* Excluding EG-530UT2, EG-530UT, EG-530UR2 and EG-530UR

VIDEO PROCESSOR **EPX-3500HD**

ADVANCED ENDOSCOPIC DIAGNOSTICS AND THERAPY



The EPX-3500HD, with its advanced image processing technology, facilitates endoscopic diagnostics and therapies. It provides clear images by using superior functions such as structure enhancement (FICE), automatic light control and Anti-Blur. The EPX-3500HD is compatible with our full range of 500 and 600 series endoscopes. Three patterns of FICE, which enhances the colour tone of the endoscopic images by image processing, are pre-defined and can be easily operated by pressing the scope switch button. Thanks to the Anti-Blur function, all captured images are documented in razor-sharp detail. During the archiving stage, the video processor automatically selects and saves the cleanest image.

VP-3500HD Processor

Compatible scopes	600, 500 series
Output	DVI-D x2, RGB-TV x1, S VIDEO x1, VIDEO x1
External memory	USB Flash Drive
Power rating	100–240V ± 10% 50/60HZ 1.0–0.3A*
Dimensions (W x H x D)	390 x 105 x 460 mm
Weight	8.0 kg

*less than 90VA

XL-4450 Light source

Light source	300W Xenon lamp LMP-002
Air supply pump	High, Mid, Low, Off
Power rating	230V ± 10% 50Hz 1.7A/120V ± 10% 60Hz 3.3A
Dimensions (W x H x D)	390 x 155 x 450 mm
Weight	15.0 kg





ULTRASONOGRAPHY SYSTEMS WITH NUMEROUS MODES

Ultrasonography revolutionised the clinical approach to patients with digestive and respiratory diseases. Nowadays, ultrasonography is being used to examine and visualise internal body structures for possible lesions, supporting definitive diagnosis and helping doctors to decide on suitable treatment approaches.

EUS Tower: All-in-one concept

Years of research and development to reduce patient discomfort and improve operator efficiency during endoscope examinations led to the development of Sonart, the integration of ultrasonographic diagnosis and endoscopy systems. For a more accurate diagnosis, advanced image processing technology integrates improved endoscope manoeuvrability and insertion capability. The compact, one-cart system supports various applications.



**VARIOUS
IMAGING
MODES**



HIGH RESOLUTION B-MODE -H- -S-

With a new ultrasonic wave transmission and reception design, the development of a proprietary image processing technology and high-sensitivity transducers, the SU-1 ultrasonic processor achieved a significant improvement in high resolution B-mode images. By pinpointing the affected area, small vessels or pancreatic ducts can be viewed clearly, thus supporting accurate evaluation of the affected area and high-precision ultrasonographic results.



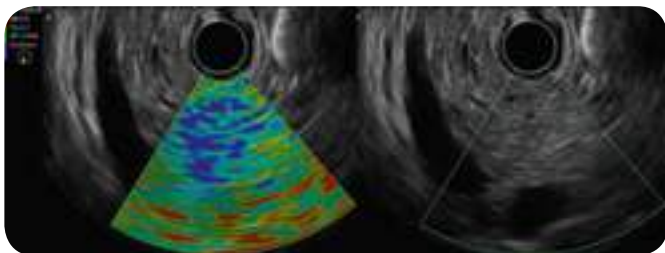
EG-580UR



EG-580UT

ELASTOGRAPHY* -H-

Relative stiffness of the tissue is visualised as a colour distribution map by calculating the distortion of the tissue caused by external compression or inner vibration, and displaying disparities in stiffness levels as different colours.

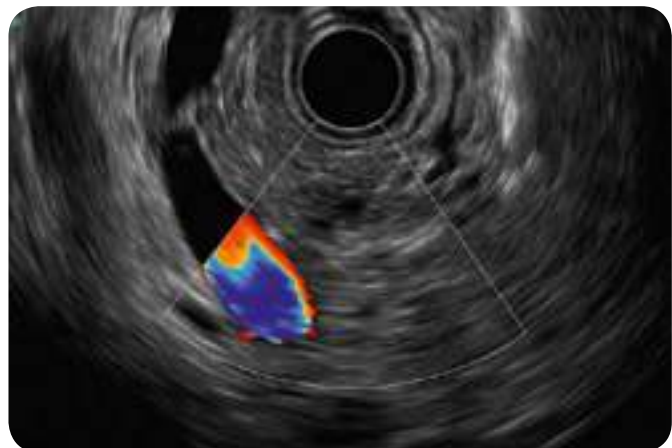


Elastography Mode

B Mode

COLOUR DOPPLER -H- -S-

Colour Doppler obtains hemodynamic information. It helps to locate an observation site and blood flow. Improved sensitivity of Colour Doppler can depict blood flow more precisely and reduce artifacts.



CHI (CONTRAST HARMONIC IMAGING)* -H-

Images are created by extracting and emphasising higher harmonic signals generated by the injected contrast medium, assisting in the detection of tumours and abnormal growths.



CHI Mode

B Mode

*CHI and Elastography modes are available only in SU-1 -H-



THI (TISSUE HARMONIC IMAGING) -H- -S-

Images are configured using higher harmonic components that are generated when ultrasound waves are transmitted through the body's tissue. By increasing resolution and reducing artifacts, this mode enables ultrasound image observation with reduced noise.

CH (COMPOUND HARMONIC IMAGING) -H- -S-

This mode visualises clear images in deep-lying areas while maintaining high resolution images in shallow lying areas to support accurate diagnoses.

SOUND SPEED CORRECTION -H- -S-

Images are recomposed using the estimated optimal sound speed inside the body. With the SU-1, it is possible to display a clearer image of the targeted area.

Endoscopic Ultrasonic Processor SU-1 -H- SU-1 -S-

Power supply	Power rating	AC 100-240V
	Frequency rating	50 Hz/60Hz
	Power consumption	2.0-1.2A
Size	Dimensions	390 x 135 x 485 mm
	Weight	13.0kg
Ultrasonography image display	Scanning method	Electronic scanning
	Probe types	Curved linear array/Radial
	Scanning modes	B, M, CD, PD, PW, THI, CH
	Special modes*	Elastography/CHI
Received signal processing	Received gain correction	0-100, 2-step
	STC	6-step gain settings per depth
	Sound speed correction	Full screen ROI settings
	Dynamic Range	40-100, 5-step
Display	PinP	Endoscopic/Ultrasound Imaging
	Observation screen	Hospital/Date/Time/Patient
Applicable	Curved linear array	EG-580UT, EG-530UT2, EB-530US
	Radial	EG-580UR, EG-530UR2
Frequency		5MHz, 7.5MHz, 10MHz, 12MHz
Image input terminal	DVI image input terminal	1

* CHI and Elastography modes are available only in SU1-H-



Image output terminals	Video terminal	1
	S-video terminal	1
	RGB TV terminal	1
	DVI terminal (digital)	1
	DVI terminal (digital/analog)	1
Sound output	HD-SDI terminal	2
	RCA terminal	1
Control terminal	Remote terminal	2
	Remote terminal (input)	1
	RS-232C terminal	1
	Keyboard terminal	1
	Foot switch terminal	1
	Network terminal	1
Measurement function	Measurement items	Distance, perimeter, area, volume, flow speed
	Data formats	JPEG, TIFF, DICOM, AVI
Storage	Storage device	Internal/External memory (USB)
	Cine memory	Storage/Playback
Accessories		Keyboard and foot switch



Easy-to-clean flat keyboard for use by touch panel and touch pad, also available with trackball keyboard

HIGH RESOLUTION IMAGES WITH ULTRASONIC ENDOSCOPES

Both the EG-580UR and EG-580UT are equipped with a Fujifilm high resolution image sensor, High Resolution Super CCD which, together with a highly efficient optical lens, allows a wide range of sensitive and brilliant quality images to be obtained to help diagnosis.



EG-580UR



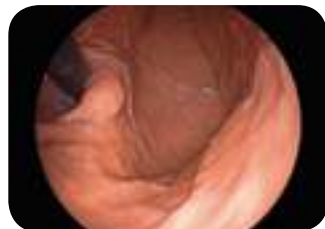
EG-580UT

OPERATION-FRIENDLY CONTROL PORTION: G7 GRIP

We have renewed the layout and size of the components of the control portion and repositioned the angulation knobs to increase accessibility from the grip. The G7 grip is designed to have an easy and comfortable feel to optimise performance and minimise stress during clinical procedures.

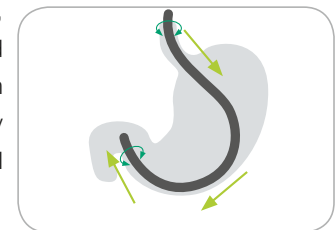
EXCELLENT INSERTION CAPABILITY

The newly designed structure of the flexible portion improves insertion capability. A small bending radius provides better observation.



HIGHLY MANOEUVRABLE FLEXIBLE PORTION

Materials for the flexible portion have been completely reviewed, especially in terms of their elasticity, in order to enhance manoeuvrability and insertion capabilities as well as torquability. Using the exclusive new material, the flexible portion is designed to be stiffer at the control portion side and become gradually more flexible towards the distal end side for better pushability.



IN PURSUIT OF BALLOON OPERABILITY

An air/water and suction button inflates and deflates water into and from the balloon.





ULTRASONIC ENDOSCOPE **EG-580UR Radial Scan**



Equipped with a slim distal end diameter of 11.4 mm and a shorter rigid section, the echo-endoscope is highly flexible. The enhanced manoeuvrability makes it easier to approach in retroflex observation of fundus and cardia, and with its round tip design and a direct forward view, the EG-580UR can be inserted into narrow lumen – just like a standard gastroscopic procedure. Furthermore the upward bending capability of 190° allows maximum flexibility.



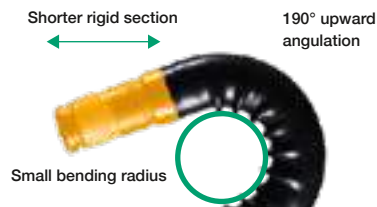
Endoscopic functions

Viewing direction	0°
Observation range	3–100 mm
Field of view	140°
Distal end diameter	11.4 mm
Flexible portion diameter	11.5 mm
Bending capability	Up 190°/Down 90° Right 100°/Left 100°
Working length	1,250 mm
Overall length	1,550 mm
Working channel diameter	2.8 mm

Ultrasonic functions

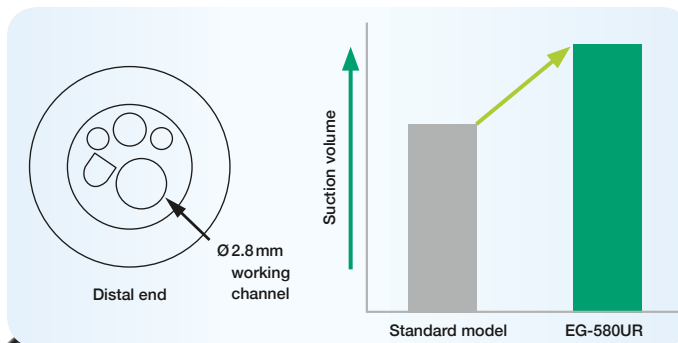
Scanning mode	Colour Doppler, Power Doppler, Pulse Doppler, B mode, M mode
Scanning method	Electronic radial scan
Scanning angle	360° (in combination with SU-1)
Frequency	5 MHz/7.5 MHz/ 10 MHz/12 MHz

GREAT APPROACH ABILITY



Ø2.8MM WORKING CHANNEL SUPPORTING IMPROVED SUCTION POWER

The use of a larger working channel of Ø2.8mm allows easy suctioning of blood and bodily fluids, providing a clear view during endoscopic observation.



ULTRASONIC ENDOSCOPE **EG-580UT** Curved Linear Array



The therapeutic echo-endoscope with a small bending radius and a short rigid section enables easier access to the targeted areas. A wide puncture range assists for FNA. The 140° endoscopic field of view, together with the 40° forward oblique view, reduces stress during the insertion process. Combined with a powerful 150° up angulation, the scope is suitable for both observation and therapeutic procedures.



Endoscopic functions

Viewing direction	40° (Forward oblique)
Observation range	3–100 mm
Field of view	140°
Distal end diameter	13.9 mm
Flexible portion diameter	12.4 mm
Bending capability	Up 150° / Down 150° Right 120° / Left 120°
Working length	1,250 mm
Overall length	1,550 mm
Working channel diameter	3.8 mm

Ultrasonic functions

Scanning mode	Colour Doppler, Power Doppler, Pulse Doppler, B mode, M mode
Scanning method	Electronic curved linear array scan
Scanning angle	150° (in combination with SU-1)
Frequency	5 MHz / 7.5 MHz / 10 MHz / 12 MHz

40° FRONT OBLIQUE, 140° ENDOSCOPIC FIELD



FORCEPS ELEVATOR ASSIST

The Forceps Elevator Assist function ensures a steady maximum UP forceps elevation when the lever on the control portion is pulled down completely and clicked into place. This function reduces strain on the thumb caused by repeatedly operating the lever during procedures. It also enables flexible and subtle endoscopic operations during therapeutic procedures and supports stable puncture trajectory.



Hold maximum upwards forceps elevator



COMPLETING ACCESSORIES

ESD KNIFE **FLUSH**

ONE KNIFE COVERS FROM MARKING TO ARREST OF BLEEDING, ACHIEVING HIGH VERSATILITY

One single knife allows procedures including 1. marking, 2. incision, 3. lifting, 4. dissection and 5. arrest of bleeding. The high versatility improves operation abilities and cost efficiencies. Safer and more efficient treatment is achieved by using the protruding knife length best suited for each treatment area.



1. Marking



2. Mucosal incision



3. Lifting and 4. Submucosal dissection



5. Arrest of bleeding

Aimed at achieving enhanced usability and ideal for all physicians from ESD trainees to skilled practitioners.

WATER JET SYSTEM MAINTAINS A CLEAN TIP

The water jet system keeps the tip of the knife clean by washing off debris and lesion tissue adhering to the tip, thereby maintaining the sharpness of the knife throughout the treatment.



NEW SLIM HIGH-FREQUENCY **ESD KNIFE**



FlushKnife BTS's ball tip produces good traction, enabling the target tissue to be dissected smoothly. The ball tip touches a wider range of tissue and supports effective coagulation.

Distal End: 1.5 mm/2.0 mm/2.5 mm/3.0 mm

Working Length: 2,000 mm

Also available with a working length of 2,300 mm (distal end 1.5 mm or 2.0 mm)



FlushKnife NS's slim needle-shaped tip provides stronger dissection capability by high current density and enables sharp marking.

Distal End: 1.0 mm/1.5 mm/2.0 mm/2.5 mm/3.0 mm

Working Length: 2,000 mm

Also available with a working length of 2,300 mm (distal end 1.5 mm or 2.0 mm)

CHARACTERISTICS

Enhanced suction capability

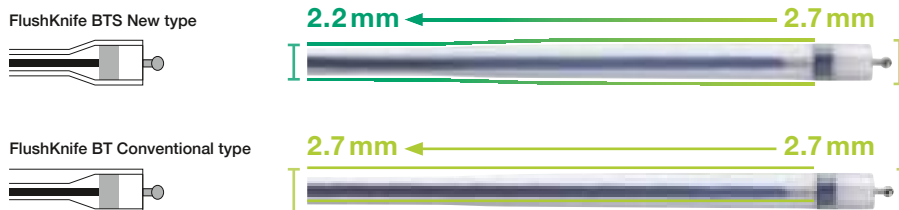
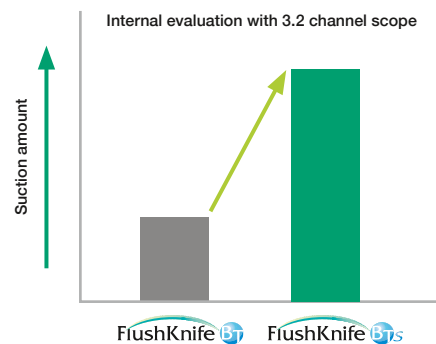
- With the thinner sheath, the space between the accessory channel and FlushKnife is enlarged, which enables increased suction performance while stabilising the sheath.

Excellent manoeuvrability and stability

- FlushKnife is stabilised by the minimised gap within the forceps channel.

Improved durability and insertion ability

- Reduced resistance during scope insertions and improved durability (less kinking) is achieved by enhanced flexibility and a thinner sheath.



The sheath tip shape is modified compared to a conventional type. The thinner sheath provides increased suction capability, while the shape of the sheath stabilises the axis.



RECOMMENDATION FOR USE

Diameter	1 mm	1.5 mm	2 mm	2.5 mm	3 mm
Oesophagus	++	+++	+++	+	+
Stomach	++	+++	+++	+++	++
Colon	++	+++	+++	+	+

+++ Best indication ++ Possible Use + Indicated in certain cases

Examples of the suitable protruding lengths are suggested by Takashi Toyonaga M.D. of Kobe University Hospital. A physician must take consideration of each condition of the area or lesion to be dissected when selecting a protruding knife length.



ESD KNIFE **CLUTCH**

The 3 in 1 ESD tool for efficient and safe therapeutic procedures – incision, dissection and coagulation.

FEATURES

- Toothed jaws – to grip the mucosa membrane securely and efficiently
- Rotatable distal jaws – for a precise lesion approach
- Insulated outer edge – for a safe procedure without damaging tissue
- Two jaw lengths – available in 3.5 mm and 5.0 mm



Product name	ClutchCutter single use	
Identifier	-35-	-50-
Jaw length	3.5 mm	5.0 mm
Working length	1,800 mm	
Maximum diameter of insertion portion	2.7 mm	
Working channel diameter of compatible endoscope	2.8 mm or more	



ST

ST hoods help to perform safer and more efficient ESD and POEM by preventing the surgical field of view being blocked by mucosa and provide a clear view during the endoscopic treatment.

ST

Short Type



Model	DH-28GR		DH-29CR		DH-30CR	
Outer diameter	11.8 mm		13.0 mm		14.8 mm	
Inner diameter of tip	7.0 mm		7.0 mm		7.0 mm	
Tip length	8.0 mm		8.0 mm		8.0 mm	
Drains	2		2		2	
Applicable endoscope	EG-760R EG-760Z EG-600WR EG-600ZW EG-590WR	EG-580RD EG-530WR EC-740T M/L EC-580RD M/L	EG-760CT EG-590ZW EC-530MP EC-530LP	EC-760R-VM/VI/VL EC-760ZP-VM/VL EC-760P-VM/VL EC-600WM, WI, WL	EC-590WM4, WI4, WL4 EC-590ZW3 M/L EC-530WM3, WI3, WL3	

ST



Model	DH-15GR		DH-16CR	
Outer diameter	12.2 mm		16 mm	
Inner diameter of tip	7.0 mm		7.0 mm	
Tip length	8.3 mm		8.3 mm	
Drains	1		1	
Applicable endoscope	EG-760R EG-760Z EG-760CT EG-600WR EG-600ZW	EG-590WR EG-580RD EG-530WR EC-740T M/L EC-580RD M/L	EC-760R-VM/VI/VL EC-760ZP-VM/VL EC-760P-VM/VL EC-600WM, WI, WL	EC-600ZW M/L EC-590WM4, WI4, WL4 EC-590ZW3 M/L EC-530WM3, WI3, WL3
	Featuring Accessory Guide		Featuring Accessory Guide	

WATER PUMP **JW-2**

Specially designed for advanced endoscopic examination. Proprietary piping technology enables water flow to be quickly stopped. The one litre water bottle enables prolonged water use and minimises the need for constant refilling.



CO₂ INSUFFLATOR **GW-100**

Fast resorption of insufflated CO₂ for timesaving and patient friendly examinations. Our latest GW-100 CO₂ insufflator offers clinicians an optimised and easy-to-handle procedure as well as maximum patient comfort.

FEATURES

- Direct connection to hospital's medical CO₂ pipeline as well as to medical CO₂ cylinder
- Easy-to-use CO₂ flow rate switching function and compact design
- 2 controlled flow rate settings



Tube sets for the connection of GW-100 to the medical gas pipeline and medical gas cylinders are available.



SUBMUCOSALABLE DESIGNED

INTENDED

Eleview™ is a new submucosal injectable composition intended for use in gastrointestinal endoscopic procedures for submucosal lift of polyps, adenomas, early stage cancers, or other gastrointestinal mucosal lesions, prior to excision with a snare or endoscopic device.



5 ampoules / pouch (10 ml / ampoule)

PERFORMANCE



- Long-lasting cushion with > 45 min lifting time
- Appropriate for challenging polyps regardless of size, location, or type
- Improved margin visualisation for less potential risk of perforation

EFFICIENCY



- Requires less volume to create cushions
- Fewer reinjections and piecemeal excisions compared to saline that can increase your time saving

VISIBILITY

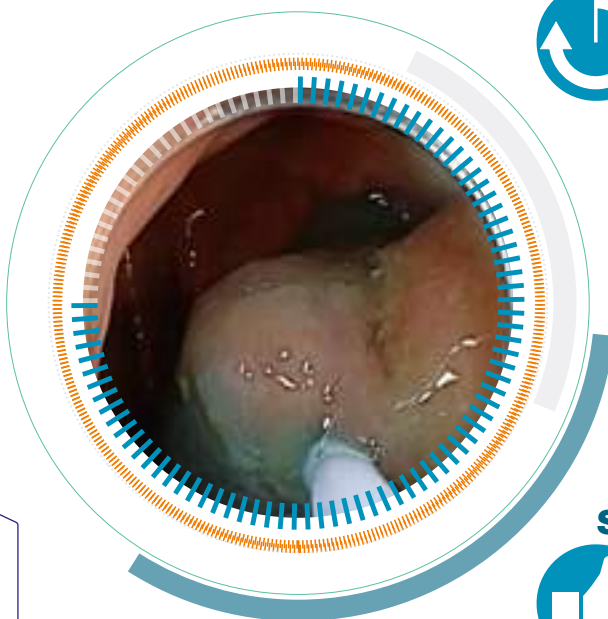


- Dyed with Methylene Blue for improved visualisation of target lesion margins

SAFE



- Pre-mixed, sterile and ready to use
- Low-viscosity emulsion fits through a 23 G needle and is easy to inject



Eleview is a trademark of Cosmo Technologies Ltd, Riverside II – Sir John Rogerson’s Quay, Dublin 2, IE info@cosmotechnologies.com Manufacturer: Cosmo Technologies Ltd., IE Not for sale in Canada.

TOP ENDOSCOPIC HOODS

Slit and hole – fluid in the hood is discharged by capillarity and pressure difference.



SHS	EG-760R	Soft & transparent type	SHF-020	EG-760Z, EC-740T M/L	Hard & transparent type
SHM	EG-760Z, EG-760CT, EC-740T M/L	Soft & transparent type	SHF-035	EG-760CT, EC-760P-VM/VL	Hard & transparent type
SHL	EC-760R-VM/VI/VL, EC-760ZP-VM/VL, EC-760P-VM/VL	Soft & transparent type	SHF-045	EC-760R-VM/VI/VL	Hard & transparent type
SHM-B	EG-760Z, EG-760CT, EC-740T M/L	Soft & black type	SHF-050	EC-760ZP-VM/VL	Hard & transparent type
SHL-B	EC-760R-VM/VI/VL, EC-760ZP-VM/VL, EC-760P-VM/VL	Soft & black type			

Packaging unit: 5 pcs./ box.

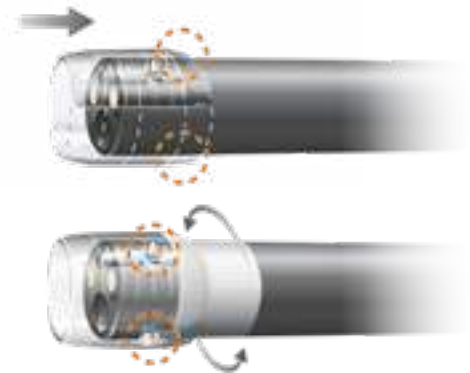
HOW TO USE

1. Attachment direction

Attach the hood to the scope in the direction shown by the arrow.
Avoid upside-down attachment. The attachment side is thinner with matching endoscope diameter indication.

2. Securing with tape

Secure the loose attachment (ex. unstable hood) with tape.
Avoid covering the side hole with the tape.





THIRD PARTY PRODUCTS

MONITORS



**RADIANCE
HD
TYPE**



27" HD type LCD monitor with Ultra bright LED Backlight

RADIANCE® ULTRA"



High-Definition, Colour Correction Technology (CCT), Full Multi-Modality, Gorilla Glass front panel

Input signal	HD-SDI x 2, DVI-D, DVI-I, RGBS, YPbPr, S-Video, Composite, VGA
Output signal	HD-SDI, DVI, RGBS, YPbPr/VGA, S-Video, Composite
Dimensions (W x H x D)	678 x 445 x 84 mm
Weight	8.9 kg

24" HD type LCD monitor with LED Backlight for Fujifilm Endoscope system

RADIANCE® G2"



High-Definition, Colour Correction Technology (CCT), Full Multi-Modality

Input signal	HD-SDI x 2, DVI-D, DVI-I, RGBS, YPbPr, S-Video, Composite, VGA
Output signal	HD-SDI, DVI, RGBS, YPbPr/VGA, S-Video, Composite
Dimensions (W x H x D)	597 x 401 x 100 mm
Weight	7.1 kg

26" HD type High Brightness LCD monitor with LED Backlight for Fujifilm Endoscope system

RADIANCE® G2"



High-Definition, Colour Correction Technology (CCT), Full Multi-Modality

Input signal	HD-SDI x 2, DVI-D, DVI-I, RGBS, YPbPr, S-Video, Composite, VGA
Output signal	HD-SDI, DVI, RGBS, YPbPr/VGA, S-Video, Composite
Dimensions (W x H x D)	673 x 418 x 88 mm
Weight	8.2 kg

19" HD type LCD monitor for Fujifilm Endoscope system

RADIANCE® HD"



High-Definition, Full Multi-Modality

Input signal	HD-SDI x 2, DVI-D, DVI-I, RGBS, YPbPr, S-Video, Composite, VGA
Output signal	HD-SDI, DVI, RGBS, YPbPr/VGA, S-Video, Composite
Dimensions (W x H x D)	465 x 400 x 98 mm
Weight	6.8 kg

19" HD type LCD monitor with LED Backlight

ENDOVUE® HD"



Input signal	DVI-D, HD-SDI, (HD-)RGBS, (HD-)YPbPr, VGA, S-Video, Composite
Dimensions (W x H x D)	464.8 x 396.2 x 99 mm
Weight	4.2 kg

Manufactured by NDS Surgical Imaging
info@ndssi.com

Monitors might not be available in all countries. Please check with your local partner. Radiance monitors include Fujifilm BIOS for the best performance.





OUR COMMITMENT TO **SERVICE**

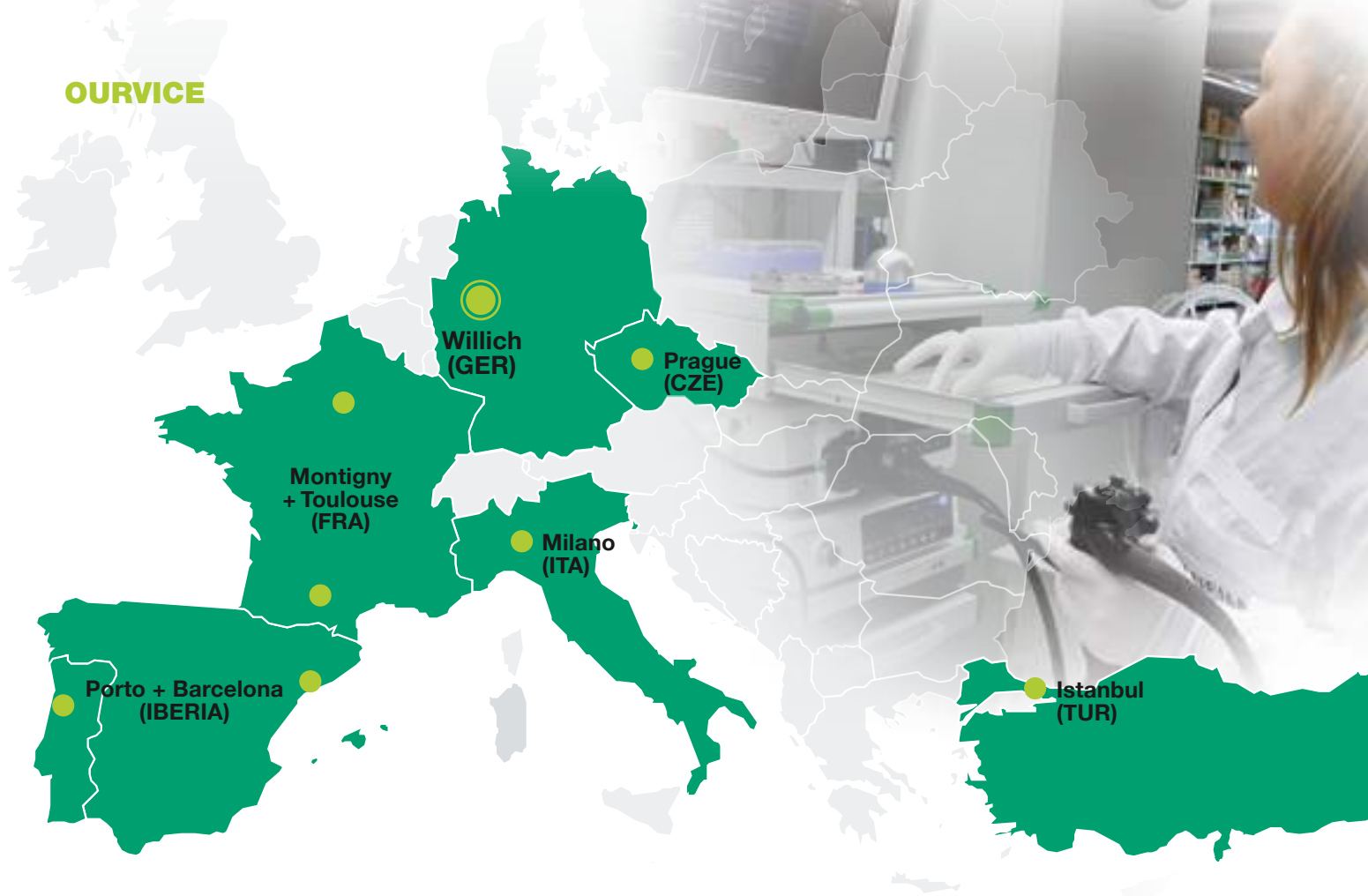
THINKYY

Our service strategy aims for highest customer satisfaction by offering a comprehensive service and being closest to the local markets. Eight service centers with the headquarters in Willich (Germany) are spread over Europe and employ highly qualified in-house technicians and experts in the field service, allowing a faster and better coverage of all the customer needs.

OURVICE

- In-house repair service
- All repair costs
- Highly qualified field service engineers
- Large variety of loan devices
- Maintenance service and damage prevention
- Support for reprocessing and on-site consulting

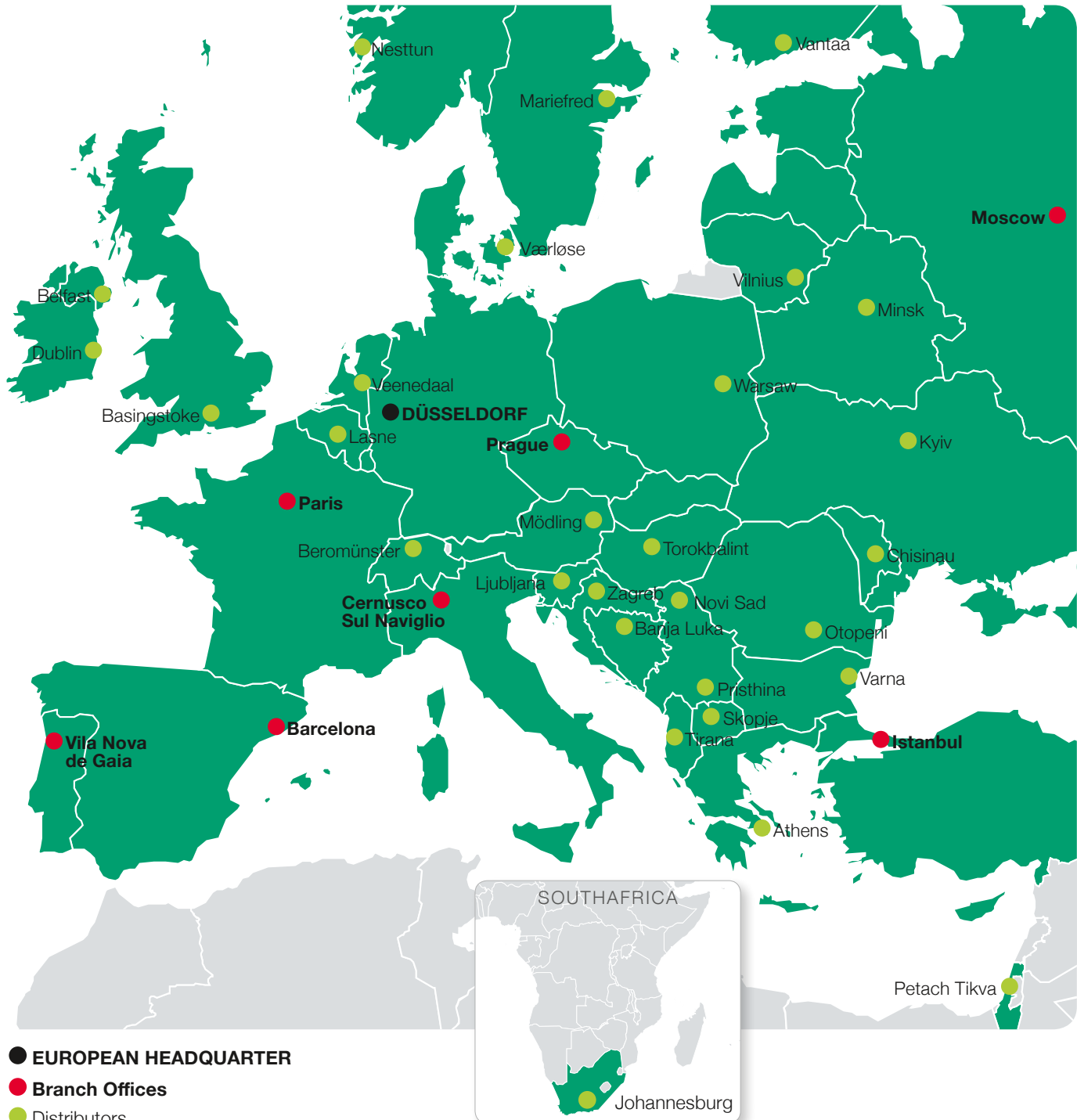
OURVICE



POWERED BY **PARTNERSHIP**

Fujifilm, a pioneer in the field of diagnostic imaging and information systems for medical institutions, operates in about 55 group companies in Europe and employs over 4.000 people engaged in R&D, manufacturing, sales and service. Dialogue and continuous partnership have a special significance for us and at our locations.

Our products and technologies are constantly being developed in agreement with you to meet your specific needs. Your contact persons are available for you – no matter where you are. Living this kind of partnership inspires us to do all we can to make the world a little better.





PRODUCT RECOMMENDATIONS

Recommended endoscopes for different gastrointestinal segments	Diseases	Special endoscopes to cope with these diseases	Special features of the special endoscope	Endoscopes for further diagnosis
Oesophagus				
EG-760R EG-760Z EG-740N EG-760CT EG-720R EG-600WR EG-580RD EG-580NW2 EG-580UR EG-580UT EG-530CT EG-530WR EG-530D EG-530NP	Zenker diverticle	EG-760CT; EG-580RD; EG-530CT; EG-530D	WCH* 3.2; WCH 3.8; dual channel	
	Other oesophagus diverticle	EG-760CT; EG-530CT; EG-530D	WCH 3.8; dual channel	
	Barrett oesophagus	EG-760CT; EG-760Z; EG-760R; EG-720R; EG-600WR	Magnification: high image quality	EG-580UT/UR
	Oesophagitis	EG-760CT; EG-760Z; EG-760R; EG-720R; EG-600WR	Magnification: high image quality	
	Mallory Weiss syndrome	EG-760CT; EG-580RD	WCH 3.8; Smart Bend	
	Oesophagus varices	2 endoscopes prepared		
	Tumors	EG-760CT; EG-760Z; EG-760R; EG-720R; EG-600WR	Magnification: high image quality	EG-580UT/UR
	Squamous cell carcinoma	EG-760CT; EG-760Z; EG-760R; EG-720R; EG-600WR	Magnification: high image quality	EG-580UT/UR
	Achalasia/POEM	EG-760CT; EG-580RD	WCH 3.8; Smart Bend	
	Stenosis	EG-740N; EG-580NW2; EG-530NP	Small outer diameter	EG-580UT/UR
Gastro intestinal				
EG-760R EG-760Z EG-740N EG-760CT EG-720R EG-600WR EG-580RD EG-580NW2 EG-530CT EG-530WR EG-530D EG-530NP	Gastritis	EG-760Z; EG-760R; EG-720R; EG-600WR	Magnification: high image quality	
	Dyspepsia	EG-760Z; EG-760R; EG-720R; EG-600WR	Magnification: high image quality	
	Ulcus ventriculi	EG-760Z; EG-760R; EG-720R; EG-600WR	Magnification: high image quality	EG-580UT/UR
	Ulcus perforation	EG-760CT; EG-580RD; EG-530CT; EG-530D	WCH 3.2; WCH 3.8; dual channel	
	Ulkus carcinomas	EG-760Z; EG-760R; EG-720R; EG-600WR	Magnification: high image quality	EG-580UT/UR
	Ulkus bleeding	EG-760CT; EG-580RD; EG-530D	WCH 3.8; WCH 3.2; dual channel	
	Gastro carcinomas	EG-760Z; EG-760R; EG-720R; EG-600WR	Magnification: high image quality	EG-580UT/UR
	Praeakanzerosen	EG-760Z; EG-760R; EG-720R; EG-600WR	Magnification: high image quality	EG-580UT/UR
	Stomach exit stenosis	EG-740N; EG-580NW2; EG-530NP	Small outer diameter	
	Vessel aberration	EG-760CT; EG-530CT; EG-530D	WCH 3.8; dual channel	EG-580UT/UR
Fundus varices	EG-580RD	Smart Bend		
Duodenum				
EG-760R EG-760Z EG-740N EG-760CT EG-720R EG-600WR EG-580RD EI-580BT EG-580UT/UR EG-530CT EG-530WR EG-530D EG-530NP	Duodenitis	EG-760Z; EG-760R; EG-720R; EG-600WR; (EI-580BT)	Magnification: high image quality (stabilised position)	
	Duodenal ulcer	EG-760Z; EG-760R; EG-720R; EG-600WR; (EI-580BT)	Magnification: high image quality (stabilised position)	
	Coeliac disease	EG-760Z; EG-760R; EG-720R; EG-600WR; (EI-580BT)	Magnification: high image quality (stabilised position)	
	Bleeding	EG-760CT; EG-580RD; (EI-580BT); EG-530CT; EG-530D	WCH 3.2; WCH 3.8; dual channel (stabilised position)	
	Tumors	EG-760Z; EG-760R; EG-720R; EG-760CT; EG-600WR; (EI-580BT)	Magnification: high image quality (stabilised position)	EG-580UT/UR

* Working Channel

Recommended endoscopes for different gastrointestinal segments	Diseases	Special endoscopes to cope with these diseases	Special features of the special endoscope	Endoscopes for further diagnosis
Small Intestine				
EN-580T EN-580XP	Tumors of the small intestine	EN-580T	Bigger working channel	
	Erosive and ulcerated defects	EN-580XP	Small outer diameter	
	Bleeding	EN-580T	Bigger working channel	
	Vessel anomaly	EN-580T	Bigger working channel	
Biliary Tract and Pancreas				
EN-580T EN-580XP EI-580BT EG-580UT/UR ED-580XT ED-530XT8	Bile duct stones	EI-580BT; ED-580XT; ED-530XT8		EG-580UT/UR
	Cholelithiasis	EI-580BT; ED-580XT; ED-530XT8		
	Postoperative alterations	EI-580BT; ED-580XT; ED-530XT8		
	Malignant stenosis	EI-580BT; ED-580XT; ED-530XT8		EG-580UT/UR
	Tumors of the papilla	EG-760Z; EG-760R; EG-720R; EG-600WR; EI-580BT; ED-580XT; ED-530XT8	Magnification: high image quality	
	Environmental Tumors	EG-760Z; EG-760R; EG-720R; EG-600WR; EI-580BT	Magnification: high image quality	EG-580UT/UR
	Infections	EG-760Z; EG-760R; EG-720R; EG-600WR; EI-580BT	Magnification: high image quality	
Colon				
EC-760ZP-VM/VL EC-760R-VM/VI/VL EC-760P-VM/VL EC-740TM/TL EC-720RM/RI/RL EC-600WM/WI/WL EC-580RD L EN-580T EN-580XP EG-580UT/UR EC-530WM3/WI3/WL3 EC-530MP/LP EC-530DM/DL ES-530WE EC-450BI5	Colorectal polyps	EC-760ZP-VM/VL; EC-760R-VM/VI/VL; EC-760P-VM/VL; EC-740TM/TL; EC-720RM/RI/RL, EC-600WM/WI/WL	High image quality; magnification; Smart Bend	
	Flat adenomas	EC-760ZP-VM/VL; EC-760P-VM/VL	High image quality; magnification	
	Malignant Tumors	EC-760ZP-VM/VL; EC-760P-VM/VL	High image quality; magnification	EG-580UT/UR
	Intestinal inflammation	EC-760ZP-VM/VL; EC-760R-VM/VI/VL; EC-760P-VM/VL; EC-720RM/RI/RL; EC-600WM/WI/WL	High image quality; magnification	
	Irritable bowel syndrome	EC-760ZP-VM/VL; EC-760R-VM/VI/VL; EC-760P-VM/VL; EC-720RM/RI/RL; EC-600WM/WI/WL	High image quality; magnification	
	Ulcerative colitis	EC-760ZP-VM/VL; EC-760R-VM/VI/VL; EC-760P-VM/VL; EC-720RM/RI/RL; EC-600WM/WI/WL	High image quality; magnification	
	Crohn's disease	EC-760ZP-VM/VL; EC-760R-VM/VI/VL; EC-760P-VM/VL, EC-720RM/RI/RL; EC-600WM/WI/WL	High image quality; magnification	
	Hemorrhoids	2 endoscopes prepared		
	Anal diseases	EC-760P-VM/VL; EC-740TM/TL; EC-580RD L	Smart Bend	

All endoscopes are compatible with the video processors ELUXEO™ 7000 system, ELUXEO™ Lite EP-6000 and EPX-3500HD. All endoscopic ultrasonography systems are compatible with processor SU1.

This overview contains selected information and recommendations and does not purport to be complete.

360° SERVICE



**ADVANCING DEEPER INSIGHTS
IN ENDOSCOPY**

FUJIFILM

FUJIFILM Europe GmbH

Heesenstr. 31, 40549 Düsseldorf, Germany
Tel.: +49 211-50 89 0, Fax: +49 211-50 89 8700
www.fujifilm.eu, endoscopy_eu@fujifilm.com