



# Molift Rail System

Products and components  
Catalogue

 **etac**<sup>®</sup>

# Ergonomic solutions that set the standard

Molift offers a comprehensive range of flexible ergonomic solutions within moving and handling, for people with reduced mobility. Our long-standing tradition of setting new standards, in consultation with healthcare professionals, has enhanced the quality of life for users while protecting carers.

## Benchmarking value and expertise

Family members, healthcare professionals and users have first-hand knowledge of the risks of moving and lifting, so using the most efficient and safe product is of paramount interest for all involved.

Molift products offer value for money, optimise user mobility and enhance their quality of life. The products require minimal physical exertion from healthcare professionals which, in turn, promotes the reduction of work-related injuries and increase carers' safety and productivity. These safe and efficient methods afford carers the opportunity to devote more time to personal care.

## Affordable safety

Molift assists healthcare professionals to select the best solution to meet their users' needs and create a safe and effective workplace environment for carers. Well-researched expert advice, analytical tools and coordinated installation services contribute to Molift products and systems being integrated seamlessly into all types of environments.

However, our collaboration doesn't stop there! We also offer professional training that allows carers to not only select the most appropriate solution but also help them to continue to operate the product in the most effective way.

Once in operation, carers can feel safe in the knowledge that Molift's comprehensive maintenance service means that they will have access to a technical support team when required.

## A history of safety, design and expertise

Molift, a brand in the Etac Group, has developed products and services in the assistive technology industry since the 1980's. Molift's had the foresight to consult healthcare professionals for expert advice and to then transfer that knowledge into the production of a range of hoisting and transfer solutions. We aim to continue to set new industry standards for functionality, durability, cost effectiveness and even design. Indeed, throughout our long and rich history, we have received numerous international design awards.





## Our standards

Molift products' manufacturing unit, Etac Supply Gjovik AS, is certified in accordance to ISO standards. This affects how we drive and safeguard the quality of our products and our processes.

### Systems for quality assurance

We are certified according to ISO 9001, which means that all our work processes, from product development and production to the products and their delivery meets the most stringent quality requirements.

### Traceability

Molift meets all the requirements of ISO 13485 with regard to traceability of our products. All our hoists and slings have bar codes and unique serial numbers to facilitate traceability for our distributors on their market.

### Environmental requirements

We work continuously to minimise the impact of our operation on the environment, and we are certified according to ISO 14001. This standard contains legal requirements on raw materials, emissions, recycling and power consumption.

## Content

Molift ceiling hoists.....	4
Rail system components .....	8
Free standing gantry systems .....	13
Trolleys .....	14
In rail charging.....	15

# Molift ceiling hoists

The lifting function on all Molift Air hoists is performed by a battery-driven motor. All hoist types run on a rail system with a 'smart quick release' function which makes it very easy to engage/disengage the hoist.

Recharging of Molift Air hoists is either by manual means or by in-rail charging, which is performed automatically across the rail layout.

Molift Nomad hoists can only be charged manually.

All Molift hoists have built-in software as standard (the 'Service Tool'), enabling data gathering on the use of the hoist. The software can provide service alerts and technical trouble-shooting, as well as allowing verification and adjustment of key parameters.



**Molift Air 200**

Max. hoisting capacity 205 kg



**Molift Air 350**

Max. hoisting capacity 350 kg



**Molift Air 500**

Max. hoisting capacity 500 kg

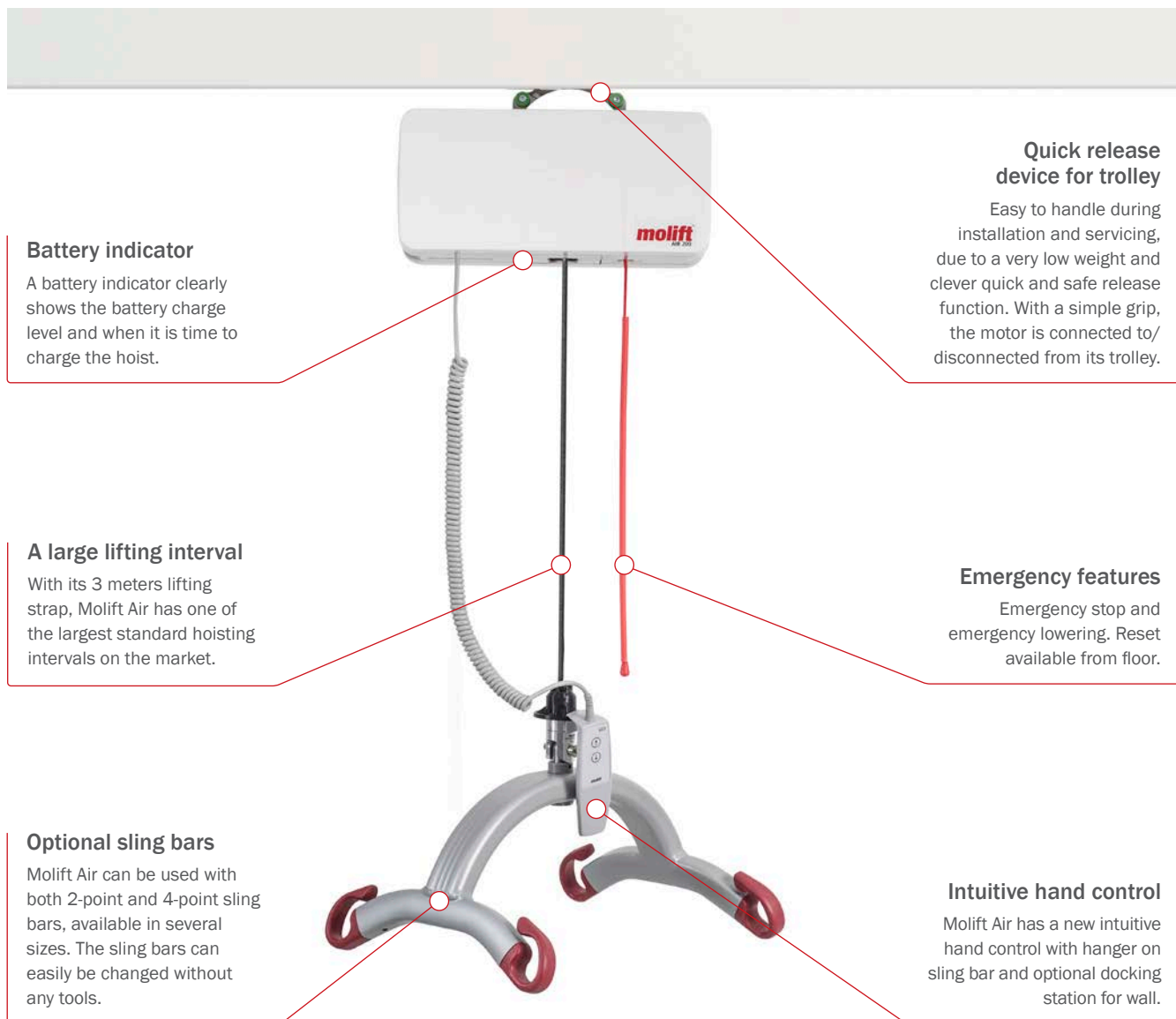


**Molift Nomad**

Max. hoisting capacity 160-255 kg

Model	Including	Item no.	Model	Including	Item no.
Molift Air 200	SLA Battery	26200	Molift Nomad 205	NiMH Battery	22205
Molift Air 200	Lithium Battery	26201	Molift Nomad 255	NiMH Battery	22255
Molift Air 350	SLA Battery	26350			
Molift Air 350	Lithium Battery	26351			
Molift Air 500	SLA Battery	26500			

All models includes hoist, handcontrol and charger



**Battery indicator**

A battery indicator clearly shows the battery charge level and when it is time to charge the hoist.

**Quick release device for trolley**

Easy to handle during installation and servicing, due to a very low weight and clever quick and safe release function. With a simple grip, the motor is connected to/disconnected from its trolley.

**A large lifting interval**

With its 3 meters lifting strap, Molift Air has one of the largest standard hoisting intervals on the market.

**Emergency features**

Emergency stop and emergency lowering. Reset available from floor.

**Optional sling bars**

Molift Air can be used with both 2-point and 4-point sling bars, available in several sizes. The sling bars can easily be changed without any tools.

**Intuitive hand control**

Molift Air has a new intuitive hand control with hanger on sling bar and optional docking station for wall.

Facts	Molift Air 200	Molift Air 350	Molift Air 500	Molift Nomad
Maximum user weight (SWL)	205 kg	350 kg	500 kg	160-255 kg
Total weight (with SLA battery)	8.6 kg	8.6 kg	15kg	6.8 kg
Length	360 mm	360 mm	360 mm	522 mm
Width	190 mm	190 mm	250 mm	200 mm
Height	195 mm	195 mm	195 mm	330 mm
Battery NiMH	-	-	-	26.4 V NiMH 2.2 Ah
Battery Lithium	25.6 V LiFePO4 2.4 Ah	25.6 V LiFePO4 2.4 Ah	-	-
Battery SLA	26.4 V SLA 2.6 Ah	26.4 V SLA 2.6 Ah	12 V SLA 2.9 Ah	-
Battery charger	100-240 V AC, 40-60 Hz	100-240 V AC, 40-60 Hz	100-240 V AC, 50-60 Hz	100-240V AC 50-60 Hz
Battery charge time	6 hrs	6 hrs	6 hrs	3 hrs
Motor	24 V DC	24 V DC	24 V DC	24V DC
Hoisting interval	3000 mm	2600 mm	3000 mm	2000 mm
Hoisting speed 75 kg	60 mm/sec	60 mm/sec	30 mm/sec	30 mm/sec
Expected lifetime	30 000 lifts SWL/10 years	30 000 liftsw SWL/10 years	30 000 lifts SWL/10 years	30,000 lifts SWL/10 years
Molift Service Tool (software)	Included	Included	Included	Included
Emergency lowering	Mechanical/Electrical	Mechanical/Electrical	Mechanical/Electrical	Electrical
Emergency stop	Yes. Reachable from floor	Yes. Reachable from floor	Yes. Reachable from floor	Yes
Protection class; hand control & hoist motor	IP24	IP24	IP24	IP24

## Accessories



### Molift Air scale class III

SWL 300/400 KG

For Air 200/205/300 .....1840000

For Air 350/500 ..... 1431021



### Molift Nomad scale class III

For Molift Nomad .....1100235



### Room to room transfer

Unit for Molift Air .....2510295

## Sling bars

Exchangeable sling bars for Molift Air



### 4-point sling bars

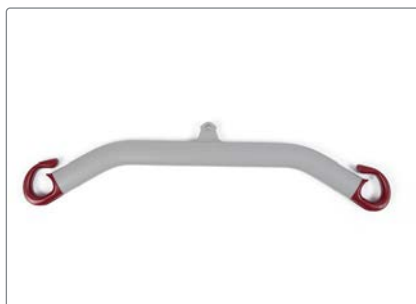
SWL 350 kg

4-pt 350 mm Small .....2530210

4-pt 450 mm Medium .....2530211

4-pt 550 mm Large .....2530212

4-pt 650 mm Extra large .....2530213



### 2-point sling bars

SWL 350 kg

2-pt 350 mm Small .....2530115

2-pt 450 mm Medium .....2530120

2-pt 550 mm Large .....2530125



### 8-point sling bar

For transfer situations with a fabric stretcher.  
SWL 300 kg

8-pt sling bar One size .....2140003



### 4-point pig tale sling bar

Bariatric, SWL 500 kg

4-pt 550x550 mm, Large .....2510435



### 2-point pig tale sling bars

SWL 350 kg

2-pt 350 mm Small .....1830033

2-pt 450 mm Medium .....1830032

2-pt 550 mm Large .....1830031



# Rail system components



## Profiles, lengths

Type	Height	Item no. 3 m	Item no. 4 m	Item no. 5 m	Item no. 6 m	Item no. 7 m	Item no. Tailor made*
Rail CC/P	62 mm	1109001-3m	1109001-4m	1109001-5m	1109001-6m		1109001
Rail OC/P	62 mm	1109003-3m	1109003-4m	1109003-5m	1109003-6m		1109003
Rail DC/P	62 mm	1109005-3m	1109005-4m	1109005-5m	1109005-6m		1109005
Rail OC/P	112 mm	1109009-3m	1109009-4m	1109009-5m	1109009-6m		1109009
Rail OC/P	142 mm	1109011-3m	1109011-4m	1109011-5m	1109011-6m	1109011-7m	1109011
Rail W/P	85 mm	1109160-3m	1109160-4m	1109160-5m	1109160-6m		1109160

\*Tailor made rails can be ordered when a specific length is required. Remember to specify required lengths of each article.



## Profiles, Curves

Type	Height	Item no. 30°	Item no. 45°	Item no. 60°	Item no. 90°
Rail CC/P	62 mm	1109105	1109106	1109107	1109108
Rail OC/P	62 mm	1109135	1109136	1109137	1109138
Rail DC/P	62 mm	1109145	1109146	1109147	1109148





**Telescope bracket set**

- 80-125 mm ..... 1109700
- 120 -200 mm .....1109710



**Support Telescope**

- Ceiling Brackets ..... 1109845
- Tubular cover and ceiling flange is ordered separately when required



**Telescope bracket set**

- 190 - 305 mm ..... 1110120
- 290 - 400 mm ..... 1110025



**Tubular cover and flange**

- Length 500 mm ..... 1110142
- Flange ..... 1109826

**Telescope bracket set**

- 750-1000 mm ..... 1100040
- 950-1200 mm ..... 1110045
- 1150-1400 mm ..... 1110050
- 1350-1600 mm ..... 1110055
- 1550-1800 mm ..... 1110060
- 1750-2000 mm ..... 1110065



**Rail attachments accessories**

- T-Profile washer ..... 1109307
- Multibolt 20 mm ..... 1109306
- Multibolt 40 mm ..... 1109432



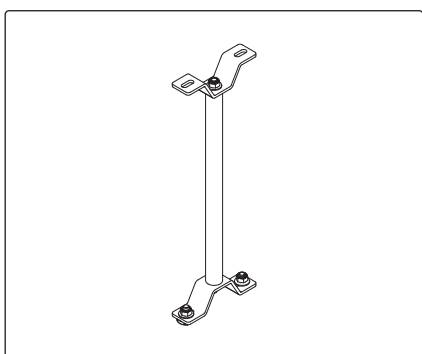
**Mounting kit**

- Screw set for telescope bracket ..... 1109740
- Multibolt 20 mm kit ..... 2520221
- Multibolt 40 mm kit ..... 1109435



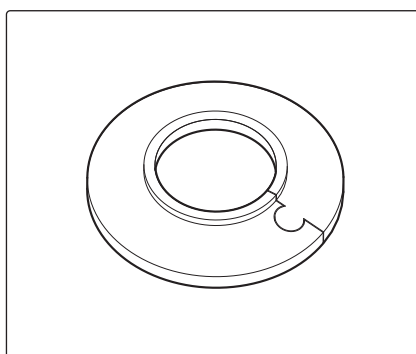
**Ceiling bracket set**

- Ceiling bracket set 40 mm ..... 1109695



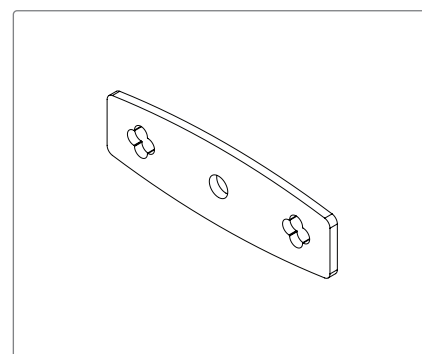
**Threaded rod w/brackets**

- M10 Set 1 Meter ..... 1109910
- M10 Set 2 Meter ..... 1109912
- 3/8" Set 36 Inches ..... 1109940
- 3/8" Set 72 Inches ..... 1109942



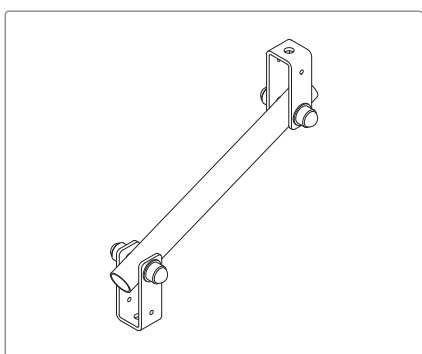
**Accessory for threaded rod**

- Sleeve LKF62/28,5/7 ..... 1120338



**Accessory for threaded rod**

- Mounting plate for wood rafters..... 1109696



**Support set**

- M10 Support Set 1 Meter ..... 1109920
- M10 Support Set 2 Meter ..... 1109922
- 3/8" Support Set 36 Inches..... 1109950
- 3/8" Support Set 72 Inches..... 1109952



**Joint mounting kit Short**

Used when the bracket is placed above the rail joint.

- Joint mounting kit short..... 1109350



**Joint mounting kit Long**

Used when the bracket is placed beside the rail joint.

- Joint mounting kit long ..... 1109450



**End stoppers**

End stop for motor trolley ..... 1109410  
 End stop for traverse trolley..... 1109411



**End caps**

End cap rail H62 ..... 1109340  
 End cap rail H112 ..... 1109341  
 End cap rail H142 ..... 1109342



**Upright support H-rail assembly**

Lenght 2500 mm ..... 1109220  
 Lenght 3500 mm ..... 1109225



**Upright support W-rail assembly**

Lenght 2500 mm ..... 1109210  
 Lenght 3500 mm ..... 1109215



**Rail modification for traverse switch**

Rail RH62 OC..... 1109671  
 Rail RH142 OC ..... 1109672



**Rail switch**

Rail switch ..... 1109066



**Wall bracket unit**

Bracket.....1109259



**Installation example 1**



**Installation example 2**



**Installation example 3**



**Installation example 4**

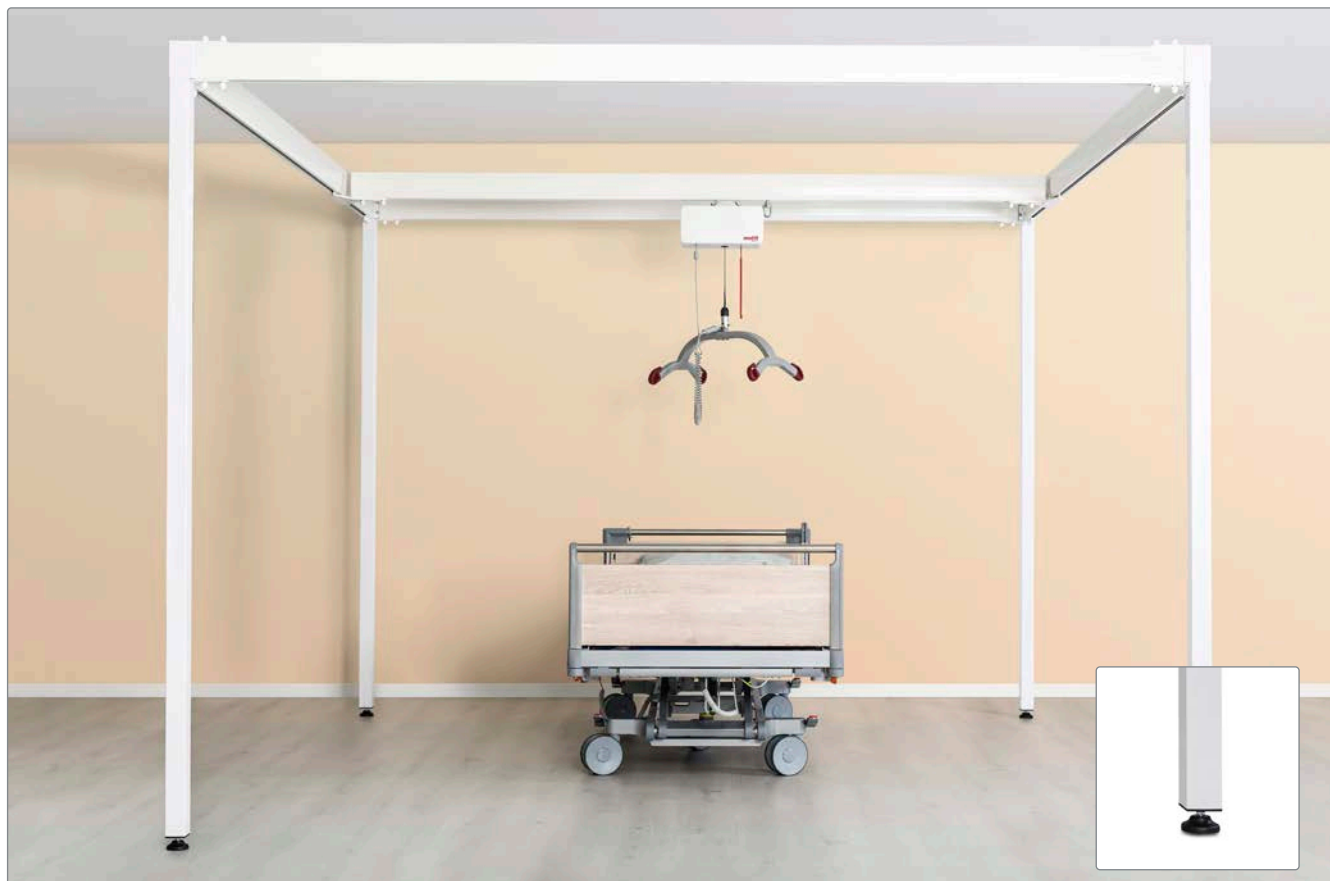


**Installation example 5**



# Free standing gantry systems

Molift Quattro - A free standing room covering gantry system



Molift Duo - A free standing single gantry system



Product name	Rail length	Item no.
Molift Quattro	3000 x 3000 mm	1600030
Molift Quattro	4000 x 4000 mm	1600035
Adjustable foot		1610200

**Facts**

Height 2190 mm (2240 - 2290 mm with adjustable foot) The length of the posts are fixed. The lowest allowed distance from floor to ceiling is 2.40 meters.  
Maximum user weight (SWL) 300 kg

Product name	Rail length	Item no.
Molift Duo 2000	2000 mm	1600013
Molift Duo 2500	2500 mm	1600015
Molift Duo 3000	3000 mm	1600017
Molift Duo 3500	3500 mm	1600019

**Facts**

Adjustable height: min 2250 mm/max 2550 mm  
Fixed lengths  
Maximum user weight (SWL) 300 kg

# Trolleys



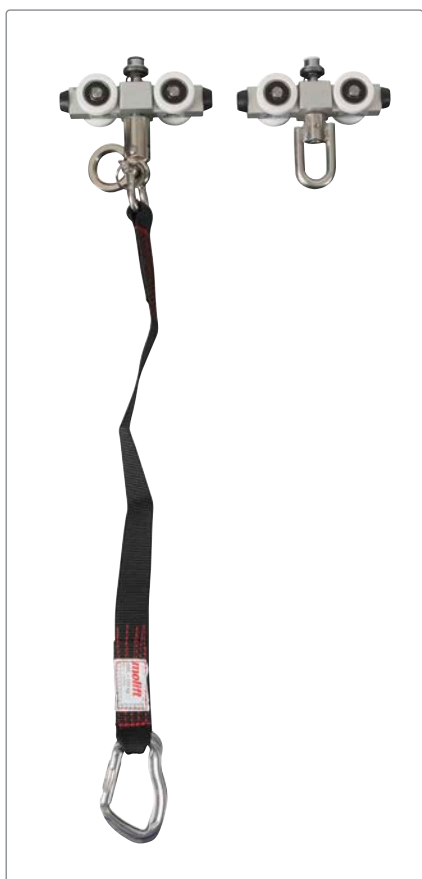
**Trolley - Molift Air**  
Trolley Molift Air 200.....2520000



**Trolley - Molift Air**  
Trolley Molift Air 500.....2520031



**Propulsion trolley - Molift Air**  
Molift Air 205/300/350.....2500103



**Trolley - Nomad for climbing**  
Length 500 mm ..... 1109112-50  
Length 650 mm ..... 1109112-65  
Length 800 mm ..... 1109112-80

**Trolley - Nomad**  
Standard trolley..... 1109109



**Travers trolley**  
Set including 2 trolleys (for boxed traverses use 1109592)

Traverse trolley set, high ..... 1109580  
Traverse trolley set, medium ..... 1109590  
Traverse trolley set, low..... 1109592



**Travers trolley - Curtain pass through**  
Set including 2 trolleys, SWL 500 kg

Trolley set CPT ..... 1109596



**Travers trolley - Wall mounted**  
Set including 2 trolleys, SWL 500 kg

Trolley set for RH112 ..... 1109163  
Trolley set for RH142 ..... 1109166



**Mounting kit - Travers trolley**  
Including bolts, nuts and washers

Traverse mounting kit ..... 1109345  
Traverse mounting kit, boxed ..... 1109353

# In rail charging



**Standard trolley IRC**  
For Molift Air 205/300/350 .....2520002



**Propulsion trolley IRC**  
For Molift Air 205/300/350 .....2520006



**Traversal trolley IRC**  
Set including 2 trolleys and 1 IRC pickup  
Traversal trolley set IRC, high ..... 1109581  
Traversal trolley set IRC, medium..... 1109591  
Traversal trolley set IRC, low .....1109594



**Connections IRC**  
Connection RH62..... 2510224  
Connection RH112 .....2510225  
Connection RH142..... 2510226



**In rail charging power supply**  
Including bracket and mounting screws  
Power supply ..... 2510119



**Conductive tape IRC**  
Application tool..... 2510125  
Conductive tape ..... 2510101





Etac is a world-leading developer and provider of ergonomic assistive devices and patient handling equipment. Our heart lies in the solutions that optimise quality of life for the individual, their family and caregivers.

For the latest news and continuously updated product information – visit: [www.etac.com](http://www.etac.com)

Etac AB  
Kista Science Tower  
SE-164 51 Kista, Sweden  
Tel +46 371 - 58 73 30  
Fax +46 371 - 58 73 90  
[info@etac.se](mailto:info@etac.se) [www.etac.com](http://www.etac.com)

  
Creating Possibilities