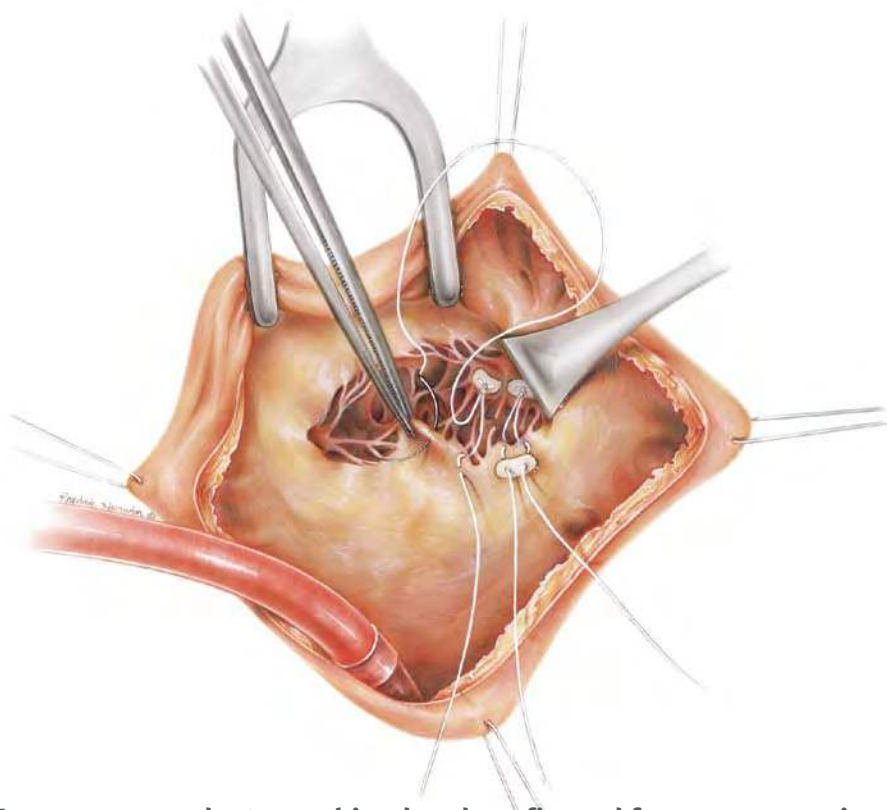
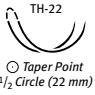


GORE-TEX® Suture with ePTFE Pledgets for Chordae Tendineae Replacement



Two proven products combined and configured for your convenience.

For more than two decades, GORE-TEX® Suture has been used successfully in the repair and replacement of chordae tendineae. It is available in configurations specifically designed for this application, including 22 mm taper point needles and thin ePTFE pledgets. GORE ePTFE pledgets also have more than two decades of intracardiac use. This material remains soft and pliable, while rapidly becoming covered with an endothelial-like tissue layer.

CATALOGUE NUMBER	NEEDLE	THREAD SIZE	THREAD LENGTH	PLEDGETS (mm)
3200	 TH-22 ○ Taper Point 1/2 Circle (22 mm)	CV-4	36" – 91 cm	4 (3x6)
3201		CV-5	36" – 91 cm	4 (3x6)
3202		CV-5	36" – 91 cm	2 (3x6), 1 (2x4)

1 box = 12 single-packaged suture with pledgets

W. L. GORE & ASSOCIATES, INC.
Flagstaff, AZ 86004

+65.67332882 (Asia Pacific)
00800.6334.4673 (Europe)
800.437.8181 (United States)
928.779.2771 (United States)

goremedical.com



PERFORMANCE
though experience

Products listed may not be available in all markets.
GORE, GORE-TEX®, and designs are trademarks of W. L. Gore & Associates.
©2008 W. L. Gore & Associates, Inc. AB0079-EU6 JUNE 2009