



**NEW &
POWERFUL**



R82 Heron

When you want the best and
most simple solution

R82[®] 

CONTENTS

- 4 One size - more options
- 6 Optimum positioning
- 7 Simple daily adjustments
- 9 Perfect working conditions
- 10 Home bathing
- 12 Washing and cleaning
- 14 Accessories
- 17 Measurements
- 18 Meet Hayla

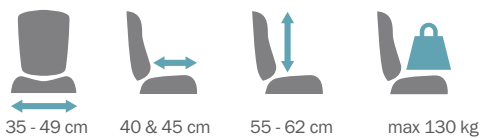
R82^o
power

Heron

The **Heron** is a state of the art toilet and bathing seat. The simple design and clean appearance feature multiple functionalities that improve both the user and carer experience.

The Heron sets new standards for users with special needs for positioning. The seat is ergonomically correct, meaning it can be tilted and the back reclined without any disadvantage for the user. Clever design means that during recline, the anatomical pivot point at the axis of the hips is maintained. This provides the user more comfort when seated.

nothing compares to daily convenience!





Yes - it is ok to make it easy

The Heron comes in one size and is delivered with a narrow backrest for freedom of movement. For added support and comfort, swing-away side supports or upholstered sides which support the shoulders can be added. We recommend to always use the upholstery for the seat and back for extra comfort.

The Heron can be delivered with the swing-away arm rests premounted. Use the arm rests for the purpose

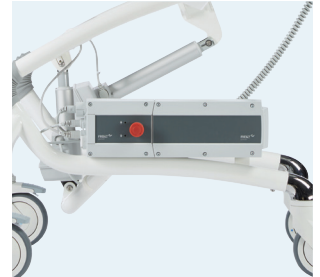
of showering or toileting and swing them away when they are no longer required.

The Heron is available as a hydraulic or power version. Both contain the same features of height adjustment, tilt-in-space and back recline, but for extra ease and comfort for the carer, we recommend using the power version.



[01] Heron, hydraulic version. [02] Handle for seat angle adjustment. [03] Handle for back recline adjustment. [04] Foot pedal for hydraulic height adjustment. [05] Heron, hydraulic version. [06] + [07] Arm rests, premounted, swing-away.

Heron | NEW with power



[01] Charger, wall mounted. [02] Handle for back recline adjustment. [03] Remote for height and seat angle adjustments. [04] Heron with arm rests, power version. [05] Cables are marked with numbers. [06] Heron, power version. [07] Battery mounted on frame.



Optimum positioning

The Heron is suitable for teenagers and transition to grown-up. Change the back height and add a couple of simple accessories to change seat width and seat depth – it is easy to make the Heron fit perfectly!



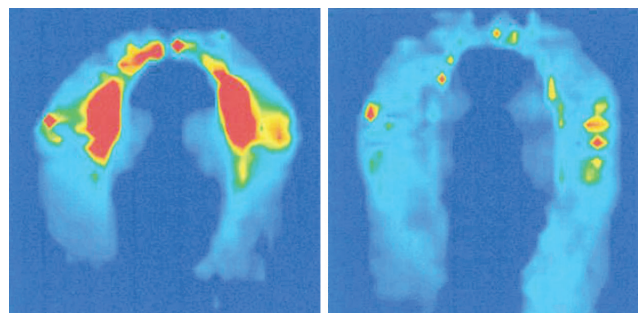
The height of the back can be adjusted to fit almost any user. The height can be adjusted up to 7 cm by simply loosening four screws, repositioning the back and remounting the screws.

The Heron has a total seat width of 55 cm. By mounting hip supports, it is possible to give additional pelvic support in the range between 35 to 49 cm, ensuring a snug fit around the user's pelvis.



The 45 cm seat depth which the Heron offers can be on the large side for some users – in those cases it is possible to add a seat depth reduction kit. Two blocks are inserted behind the back, moving it forward and reducing the seat depth by five cm.

Pressure mapping was used when designing the Heron to minimise pressure and improve comfort for users even when the seat is used for extended periods of time. Upholstery can be fitted for added seating comfort.



Simple daily adjustments

HEIGHT ADJUSTMENT



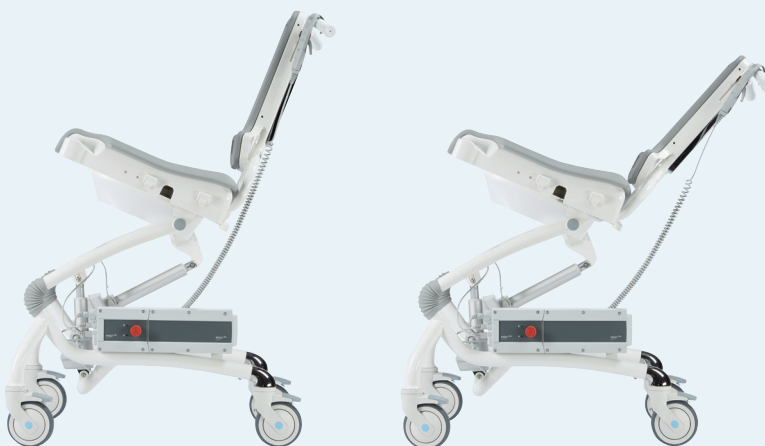
Heron with hydraulics: the seat height above floor can be adjusted from 51 to 78 cm
Heron with power: the seat height above floor can be adjusted from 56 to 78 cm

TILT-IN-SPACE



The seat tilts from -5° to 25°

BACK RECLINE



The back reclines from 90° to 120°



PERFECT WORKING CONDITIONS



Manual lifting and twisted or awkward working positions are high-risk activities for carers¹. We therefore recommend that you use a hoist when transferring users in and out of the Heron.

One of the great features of the Heron is the hydraulic or powered height adjustment and tilt-in-space which allows you to adjust the chair into the correct position and reduce the time spent in a twisted or awkward position.

For family homes where it is difficult to fit a ceiling track or a mobile hoist into the bathroom, simply place the user in the chair, move it to the bathroom area and bring it up to a convenient height for

showering and reverse the process when the user needs to use the wash basin or toilet. This means that the need to transfer the user in the bathroom area, or even fitting a hoist in the bathroom at all, is eliminated.

With the Heron, all daily toileting activities is done in the same piece of equipment, minimizing the amount of transfers needed.

For transferring users in and out of the Heron we recommend Molift products



www.etac.com/products/hoists-and-slings

1. Occup Environ Med doi:10.1136/oemed-2015-103314. Physical workload and risk of long-term sickness absence in the general working population and among blue-collar workers: prospective cohort study with register follow-up



HOME BATHING







WASHING & CLEANING

The control box, battery and remote control are waterproof and can be used in all bathing and showering situations. Remove all accessories, unplug all cables and make sure to dismount the control box, battery and remote control before machine washing.



*Washable at 85°C in a washing machine designed for medical devices**



*Control box, battery & remote control must be removed before machine washing.



Accessories

If you're looking to add comfort and functionality to your Heron, a comprehensive range of accessories to meet your needs is available.

By providing the required support to the upper trunk, head and arms, the user is extra comfortable in the chair.

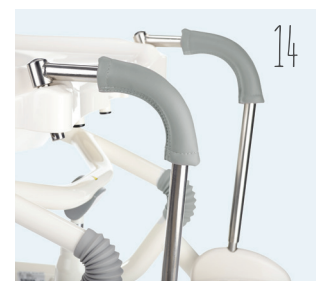
All accessories always come complete with installation hardware, making setup easy.

Upgrade your Heron by adding all sorts of useful functionalities with the right accessories.



Checklist!

- Head support
- Side supports
- Shoulder supports
- Vests and belts
- Arm rests
- Tray
- Hip supports
- Pommel
- Commode pan
- Seat depth reduction kit
- Foot supports
- Calf support
- Heel stops
- Padding for foot supports



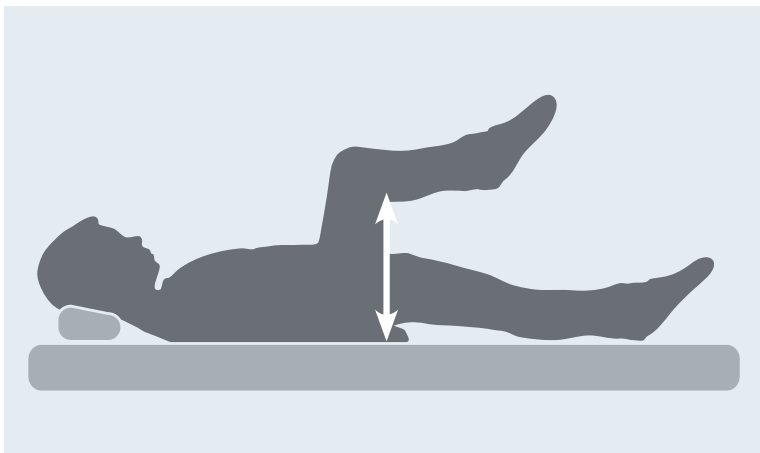
[01] Head support. [02] Side supports, swing-away. [03] Shoulder supports with upholstery. [04] Netvest. [05] Upholstery, arm rests and tray. [06] Hip supports. [07] Pommel, high or low version. [08] Commode pan. [09] Seat depth reduction. [10] Foot supports, right-angled knee with calf support. [11] Foot supports, right-angled knee, short. [12] Foot support, open knee angle. [13] Heel stops. [14] Padding for foot supports.



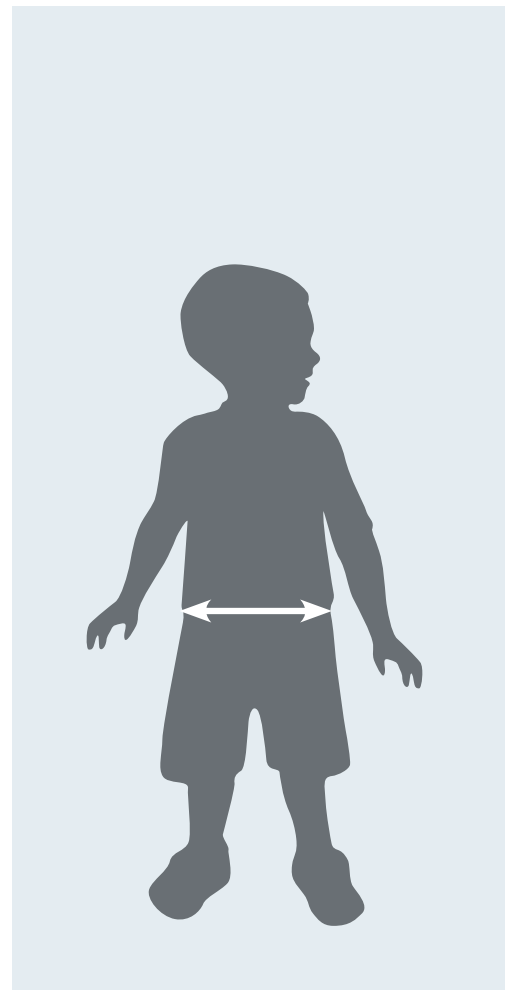
Is the Heron for you?

A few simple measurements will give you the answer

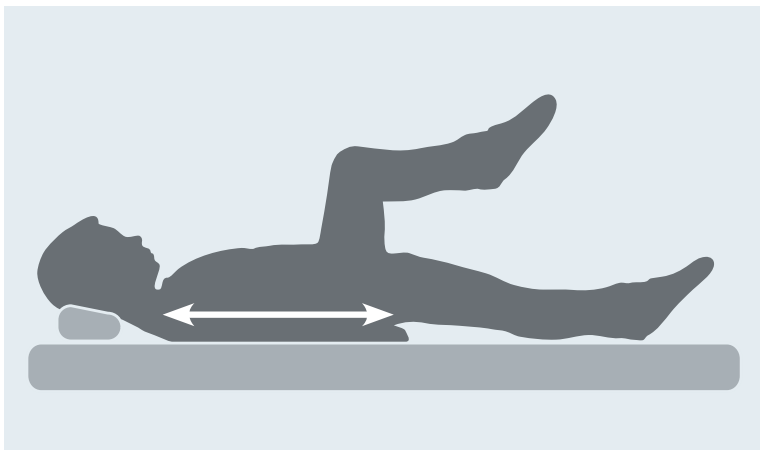
Use these simple measurements to find out if the Heron is the right toilet and bathing chair for the user. To measure accurately, always make sure that the user is lying on a firm flat surface with hips, knees and ankles at a 90° angle.



Seat depth



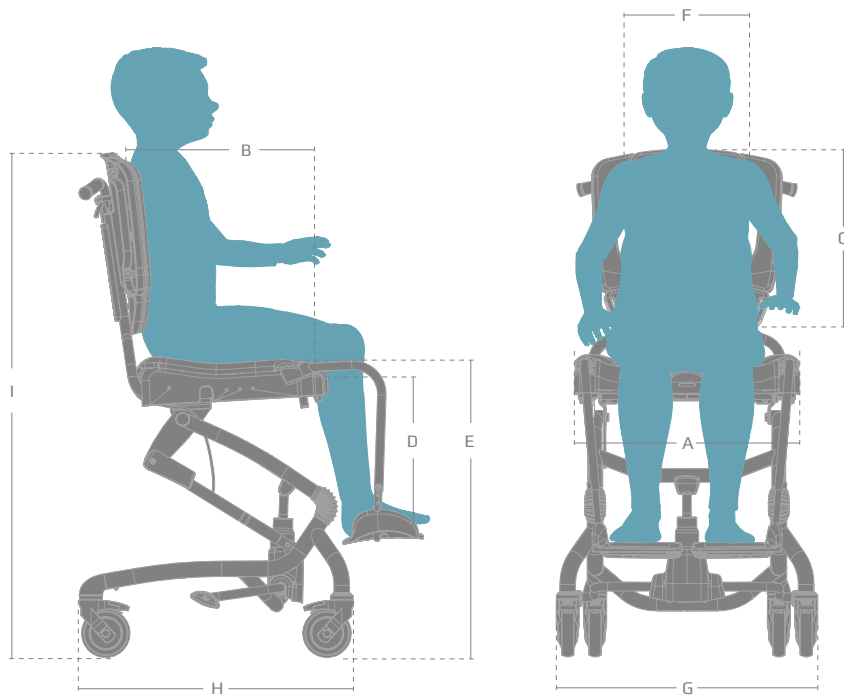
Hip width



Back height

Measurements

The Heron is available in one size and is suitable for teenagers and transition to grown-up. Change the back height and add a couple of simple accessories to change seat width and seat depth – it is easy to make the Heron fit perfectly!



Measurements

	Heron with hydraulics	Heron with power
Seat width (A)	55 cm (21¾")	55 cm (21¾")
Seat width with hip supports (accessories)	35 - 49 cm (13¾ - 19¼")	35 - 49 cm (13¾ - 19¼")
Seat depth (B)	45 cm (17¾")	45 cm (17¾")
Seat depth with reduction kit (accessories)	40 cm (15¾")	40 cm (15¾")
Back height (C)	55 - 62 cm (21¾ - 24½")	55 - 62 cm (21¾ - 24½")
Lower leg length (D)	40 - 56 cm (15¾ - 22")	40 - 56 cm (15¾ - 22")
Seat height above floor (E)	51 - 78 cm (20 - 30¾")	56 - 78 cm (22 - 30¾")
Back width (F)	29 cm (11½")	29 cm (11½")
Width, frame (G)	67 cm (26½")	67 cm (26½")
Length, frame (H)	71 cm (28")	71 cm (28")
Height, frame with seat (I)	108 - 135 cm (42½ - 53¼")	113 - 135 cm (44½ - 53¼")
Seat angling (tilt in space)	-5° -> 25°	-5° -> 25°
Back angling	90° -> 120°	90° -> 120°
Weight, without arm rests	28 kg (61.75 lb)	31 kg (68.25 lb)
Max load	100 kg (220 lb)	130 kg (286.6 lb)

21-year-old Hayla Silva Søndergaard suffers from constant spasms through the whole of her body. But when on the racetrack, she is in full control. Read the full story about Hayla on our website!



21-year-old
Hayla Silva Søndergaard



“Hayla has just beaten the world record”

These were the words of Herman Jensen, a mink farmer from Støvring, who was proud to have just seen Hayla Silva Søndergaard, his 21-year old daughter, beat the 800 metre record by a full two seconds.

»Sadly, the time is not official, as there was no electronic timing system in use today,« he explains. This does not mean that Hayla Silva Søndergaard is any less overjoyed and she insists on calling her mother right away to tell her the good news.

Due to a lack of oxygen during her birth, Hayla Silva Søndergaard suffers from spasticity. This means that she has constant spasms throughout her entire body and that her language is very limited. Therefore, Hayla speaks through a computer that she can control using her eyes.

She tells us that the speech computer is an example of how her quality of life has improved significantly since she began RaceRunning.

When she started RaceRunning, she was fastened to her wheelchair with a belt around her waist and she did not have enough control to operate the speech computer.

»RaceRunning has given me greater calm in my body and better control«, she explains.

Hayla trains three times a week. She trains both on the athletics track and on the roads near the farm in Støvring, where she runs a lot at weekends when she visits her father.

We met Hayla on a perfectly ordinary morning at Odder Højskole. This tough young lady was getting ready for another day of activity, starting with lessons in the classroom and sports in the school hall later in the day.

Please take some time to read the story on our website about Hayla and her fantastic hobby. She is a source of admiration and inspiration.



Share your R82
Heron moments



#R82heron #nothingcomparestoasmile

R82 A/S
Denmark
+45 79 68 58 88
R82@R82.com
R82.org

R82 UK Ltd.
Great Britain
+44 121 561 2222
R82uk@R82.com
R82.co.uk
facebook.com/R82UK

R82 Inc.
USA
+1 800 336 7684
information@R82.com
R82.com
facebook.com/R82Inc

R82 au Pty Limited
Australia
+61 (02) 8213 6666
au.sales@R82.com
R82.com.au
facebook.com/R82Australia



R82[®]
a part of Ftac