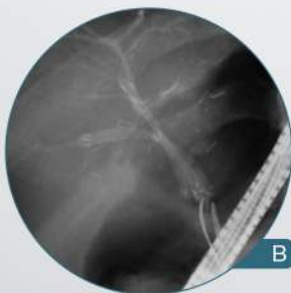
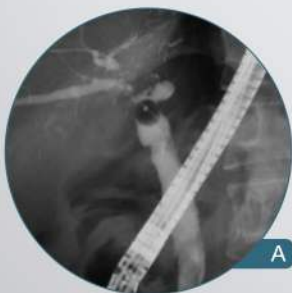
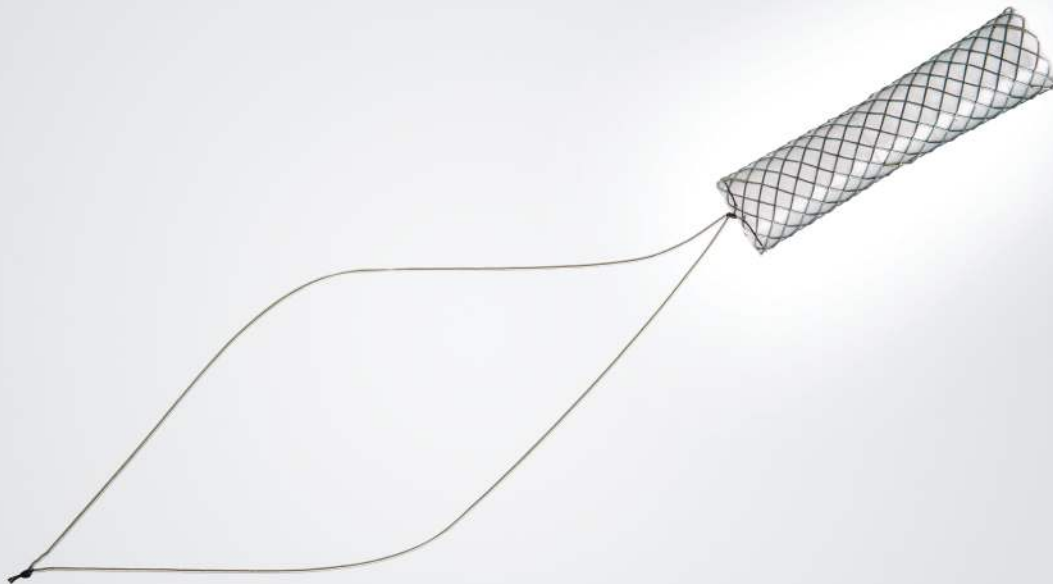


KAFFES™ Biliary Stent



- A.** The cholangiogram shows multiple anastomotic strictures at the posterior and inferior intrahepatic ducts.
- B.** The FCSEMSs (KAFFES™) are inserted sequentially into the stricture sites.
- C.** The cholangiogram demonstrates resolution of the multiple strictures.

by Sung Ill Jang et al
[Therap Adv Gastroenterol. 2017 Mar; 10(3): 297-309]

HEAD OFFICE

14, Gojeong-ro, Wolgot-myeon, Gimpo-si, Gyeonggi-do, Korea 10022

SALES OFFICE

Bldg. C 4F, 158 Haneulmaeul-ro, Ilsandong-gu, Goyang-si, Gyeonggi-do, Korea 10355
E: contact@stent.net T: +82 31 904 6153 F: +82 31 904 6157

www.taewoongmedical.com

Niti-S™ KAFFES™ Biliary Stent

for anastomotic strictures after liver transplantation

Features

- **Characteristic waist at mid-portion of the stent:** Waist shape of the stent allows strong radial force and preventing migration
- **Short length of stent:** Using a short stent across the stricture prevents to impart pressure over a large area of normal duct by reducing the potential risk of necrosis and fibrosis
- **Long platinum radiopaque retrieval string:** The long platinum string helps easy removal from the high up location of CBD
- **Radiopaque marker:** 3 (three) at both ends & 2 (two) in the middle



Ordering Information

Endoscopic Approach					Percutaneous Approach				
Code	Stent		Delivery		Code	Stent		Delivery	
	Diameter (mm)	Length (cm)	Profile (fr)	Usable Length (cm)		Diameter (mm)	Length (cm)	Profile (fr)	Usable Length (cm)
BS0604F2	6	4	8.5	180	TS0604F2	6	4	8.5	50
BS0605F2		5			TS0605F2		5		
BS0606F2		6			TS0606F2		6		
BS0607F2		7			TS0607F2		7		
BS0608F2		8			TS0608F2		8		
BS0804F2	8	4	9		TS0804F2	8	4	9	
BS0805F2		5			TS0805F2		5		
BS0806F2		6			TS0806F2		6		
BS0807F2		7			TS0807F2		7		
BS0808F2		8			TS0808F2		8		
BS1004F2	10	4	9	TS1004F2	10	4	9		
BS1005F2		5		TS1005F2		5			
BS1006F2		6		TS1006F2		6			
BS1007F2		7		TS1007F2		7			
BS1008F2		8		TS1008F2		8			

Released Article

- * Salvage therapy using self-expandable metal stents for recalcitrant anastomotic strictures after living-donor liver transplantation
by Sung Ill Jang et al [Therap Adv Gastroenterol. 2017 Mar; 10(3): 297-309]
- * A randomized trial of a fully covered self-expandable metallic stent versus plastic stents in anastomotic biliary strictures after liver transplantation
by Arthur Kaffes et al [Therap Adv Gastroenterol. 2014 Mar;7(2):64-71]
- * Fully covered self-expandable metal stents for treatment of benign biliary strictures
by Arthur J. Kaffes et al [Gastrointest Endosc. 2013 Jul;78(1):13-21. doi: 10.1016]
- * Placement of removable metal biliary stent in post-orthotopic liver transplantation anastomotic stricture
by Hoi-Poh Tee et al [World J Gastroenterol. 2010 Jul 28;16(28):3597-600]