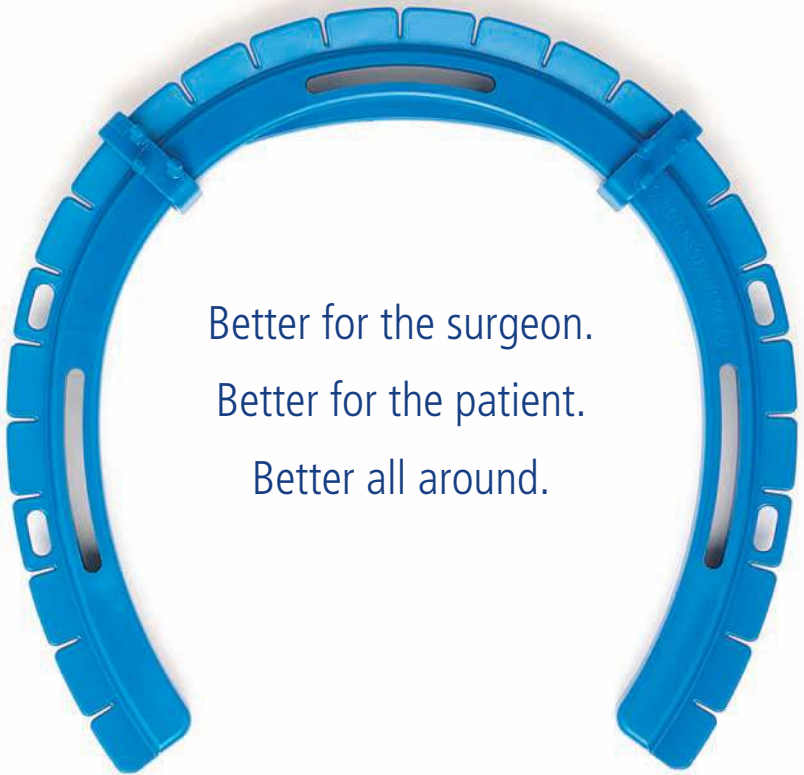


Vaginal Access Procedure Guide

FOR THE LONE STAR APS RETRACTOR™ SYSTEM



Better for the surgeon.
Better for the patient.
Better all around.

The Unique Lone Star APS Retractor™

Better for the surgeon. Better for the patient. Better all around.

Specifications

Order # 3715

(Packaged singly with 2 catheter clips)

Height 16.6 cm

Width 16.6 cm

Weight 77 g

Suggested Stays

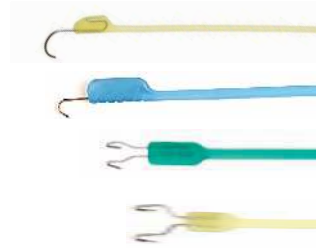
3350-8G-12 mm Blunt Hook, 8 pack

3311-8G-5 mm Sharp Hook, 8 pack

3327-4G-7 mm Two-finger Sharp Hook, 4 pack

3384-4-12 mm Two-finger Blunt Hook, 4 pack

Products are sterile, single-use only

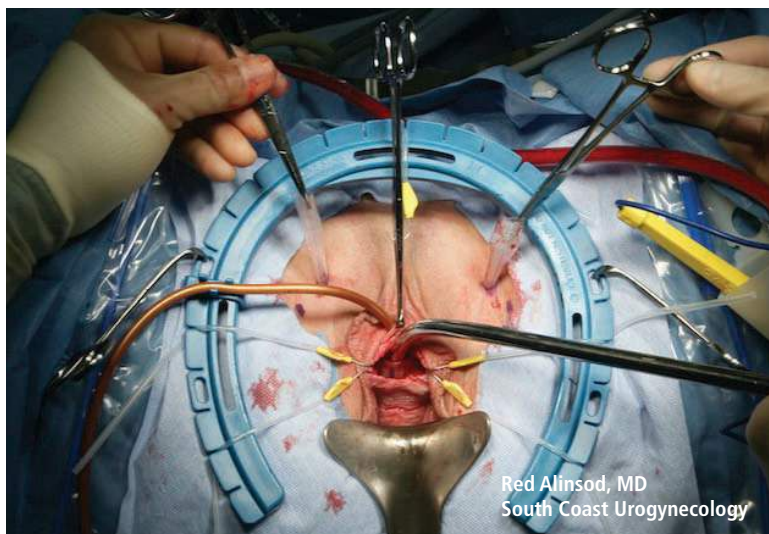


Designed Specifically For:

- Reconstructive pelvic surgeries
- Placement of sub-urethral slings
- Pelvic organ prolapse procedures
- Mesh excisions
- Fistula Repairs
- Vaginal Hysterectomies
- Vaginal Biopsies
- Vaginal Cystectomies
- Episiotomy Repairs

Sling Procedure

Recommended Products: 3715 and 3350-8G



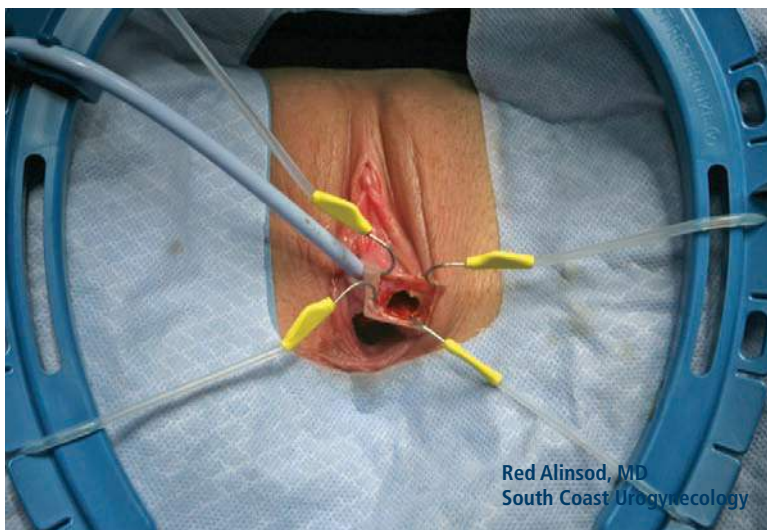
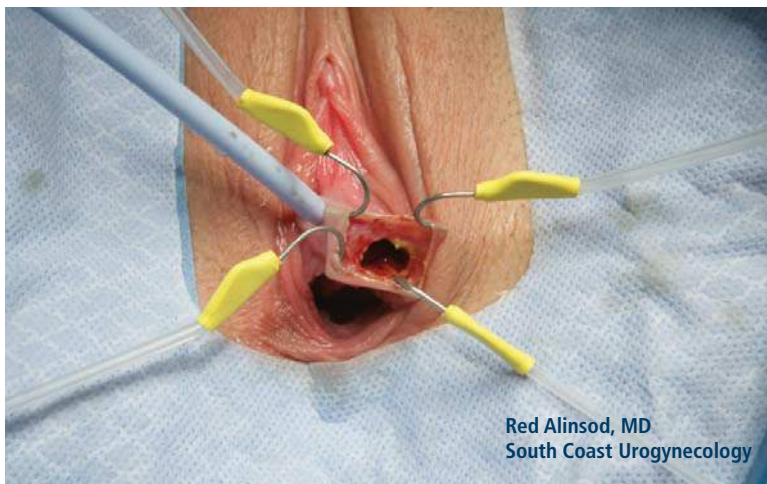
Sling Procedure

Recommended Products: 3715 and 3350-8G

- The open end of the APS Retractor provides room for the weighted speculum.
- Place the first stay. Pull in the desired direction, to the desired tension, and place in one of the slots of the APS Retractor. Repeat with a stay directly opposite the first to create counter-traction.
- Use the catheter clip to hold the catheter up and out of the way.
- As the procedure progresses, the stays will adjust and continue to retract tissue. Stays are easily repositioned to maintain optimal site access.

Vaginal Cystectomy

Recommended Products: 3715 and 3350-8G



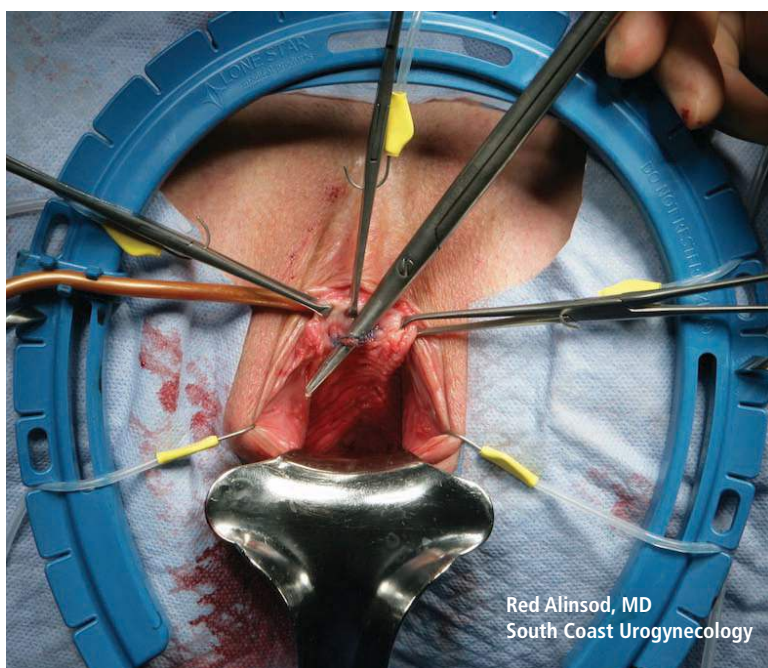
Vaginal Cystectomy

Recommended Products: 3715 and 3350-8G

- The open end of the APS Retractor provides room for the weighted speculum.
- Place the first stay. Pull in the desired direction, to the desired tension, and place in one of the slots of the APS Retractor. Repeat with a stay directly opposite the first to create counter-traction.
- Use the catheter clip to hold the catheter up and out of the way.
- As the procedure progresses, the stays will adjust and continue to retract tissue. Stays are easily repositioned to maintain optimal site access.

Mesh Excision/Repair

Recommended Products: 3715 and 3350-8G



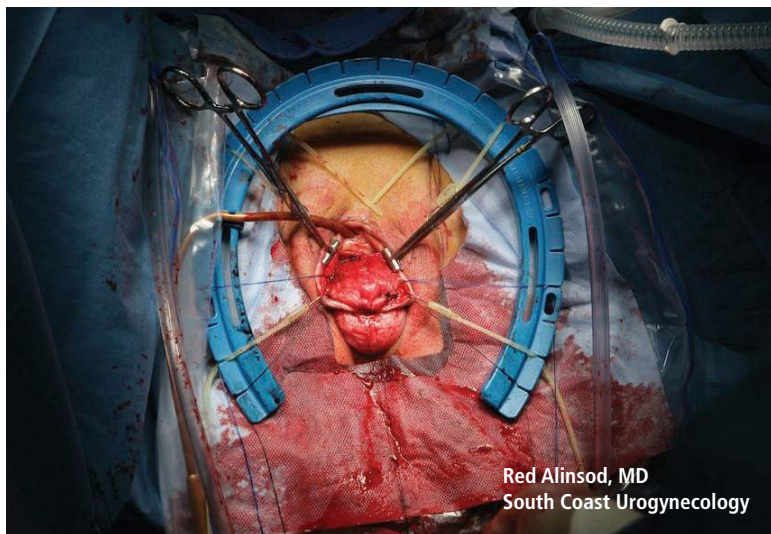
Mesh Excision/Repair

Recommended Products: 3715 and 3350-8G

- The open end of the APS Retractor provides room for the weighted speculum.
- Place the first stay. Pull in the desired direction, to the desired tension, and place in one of the slots of the APS Retractor. Repeat with a stay directly opposite the first to create counter-traction.
- Use the catheter clip to hold the catheter up and out of the way.
- As the procedure progresses, the stays will adjust and continue to retract tissue. Stays are easily repositioned to maintain optimal site access.

Anterior Repair

Recommended Products: 3715 and 3350-8G



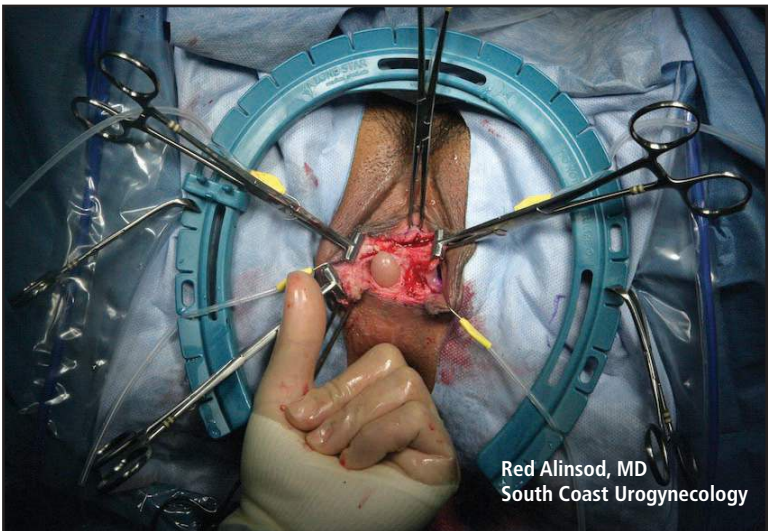
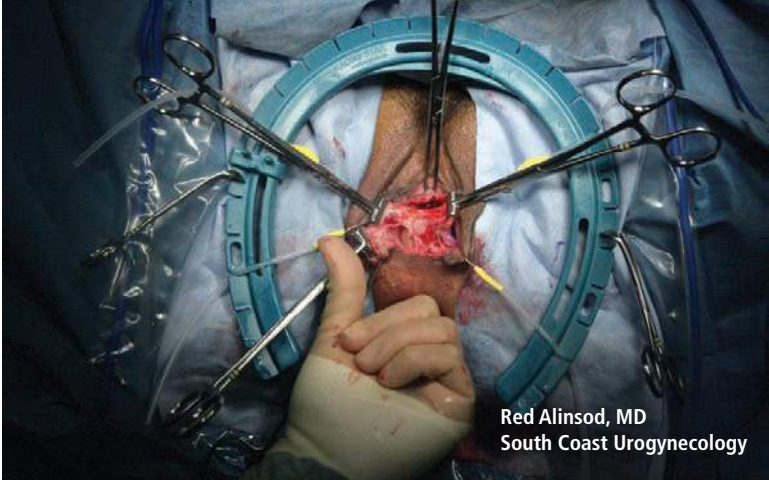
Anterior Repair

Recommended Products: 3715 and 3350-8G

- The open end of the APS Retractor provides room for the weighted speculum.
- Place the first stay and pull to the desired tension, and place in one of the slots of the APS Retractor. Repeat with a stay directly opposite the first to create counter-traction.
- Use the catheter clip to hold the catheter up and out of the way.
- As procedure progresses, the stays will adjust and continue to retract tissue. Stays are easily repositioned to maintain optimal site access.
- If placing mesh, the slots in the retractor can be used for Suture Management to hold sutures and keep them separate (see 2nd image).
- Additional clamps can be used on tissue and retracted by stays.

Recto-vaginal Fistula Repair

Recommended Products: 3715 and 3350-8G



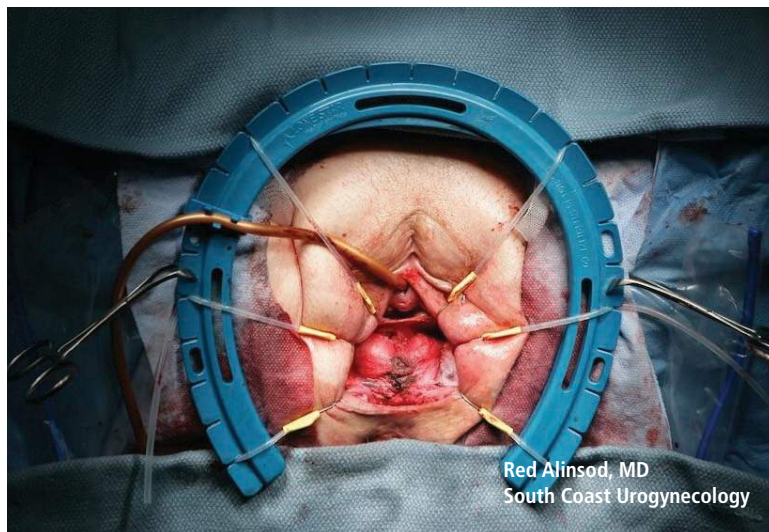
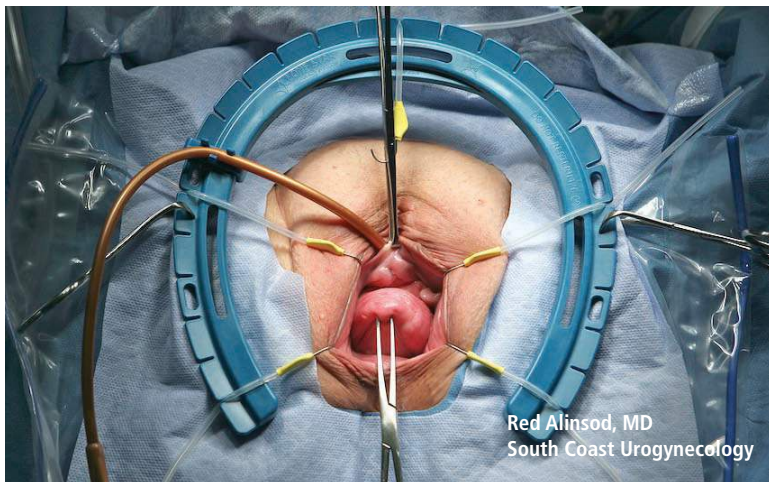
Recto-vaginal Fistula Repair

Recommended Products: 3715 and 3350-8G

- Place the first stay and pull to the desired tension, and place in one of the slots of the APS Retractor. Repeat with a stay directly opposite the first to create counter-traction.
- Use the catheter clip to hold the catheter up and out of the way.
- As procedure progresses, the stays will adjust and continue to retract tissue. Stays are easily repositioned to maintain optimal site access.
- If placing mesh, the slots in the retractor can be used for Suture Management to hold sutures and keep them separate (see 2nd image).
- Additional clamps can be used on tissue and retracted by stays.

Posterior Repair

Recommended Products: 3715 and 3350-8G



Posterior Repair

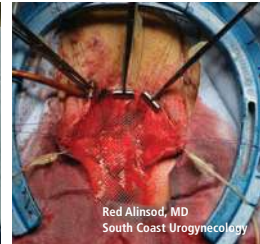
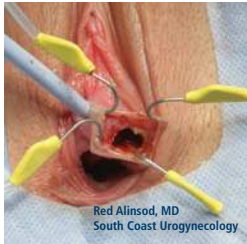
Recommended Products: 3715 and 3350-8G

- Place the first stay and pull to the desired tension, and place in one of the slots of the APS Retractor. Repeat with a stay directly opposite the first to create counter-traction.
- Use the catheter clip to hold the catheter up and out of the way.
- As procedure progresses, the stays will adjust and continue to retract tissue. Stays are easily repositioned to maintain optimal site access.
- If placing mesh, the slots in the retractor can be used for Suture Management to hold sutures and keep them separate (see 2nd image).
- Additional clamps can be used on tissue and retracted by stays.

APS Retractor System

Benefits

- Unobstructed visualization and access
- Designed specifically for pelvic and vaginal surgery
- Effectively manages the surgical site, simplifying the procedure
- Provides retraction to free up staff



CooperSurgical

CooperSurgical is the leading company dedicated to providing medical devices and procedure solutions that improve health care delivery to women regardless of clinical setting. Our company is fostering that position through expansion of its core businesses and introduction of advanced technology-based products, which aid clinicians in the management and treatment of commonly seen conditions.

800.243.2974 | 203.601.5200 | coopersurgical.com | 95 Corporate Drive | Trumbull, CT 06611
Also on [YouTube.com/coopersurgical](https://www.youtube.com/coopersurgical)