

My-Sure[®]

Hysteroscopic Tissue
Removal System

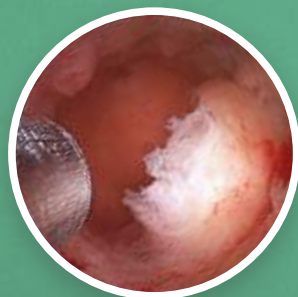


satisfaction.

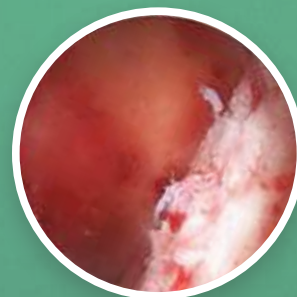
Customised and efficient tissue removal
for intrauterine polyps and fibroids.



before



during



after

HOLOGIC[®]

One solution for hysteroscopic tissue removal.

Now there's a fast, convenient way to remove intrauterine pathology – with two powerful systems that work as one. MyoSure Hysteroscopic Tissue Removal System and Aquilex Fluid Control System offer you a fully integrated solution, making it simple to quickly remove polyps and fibroids while maintaining uterine form and function.

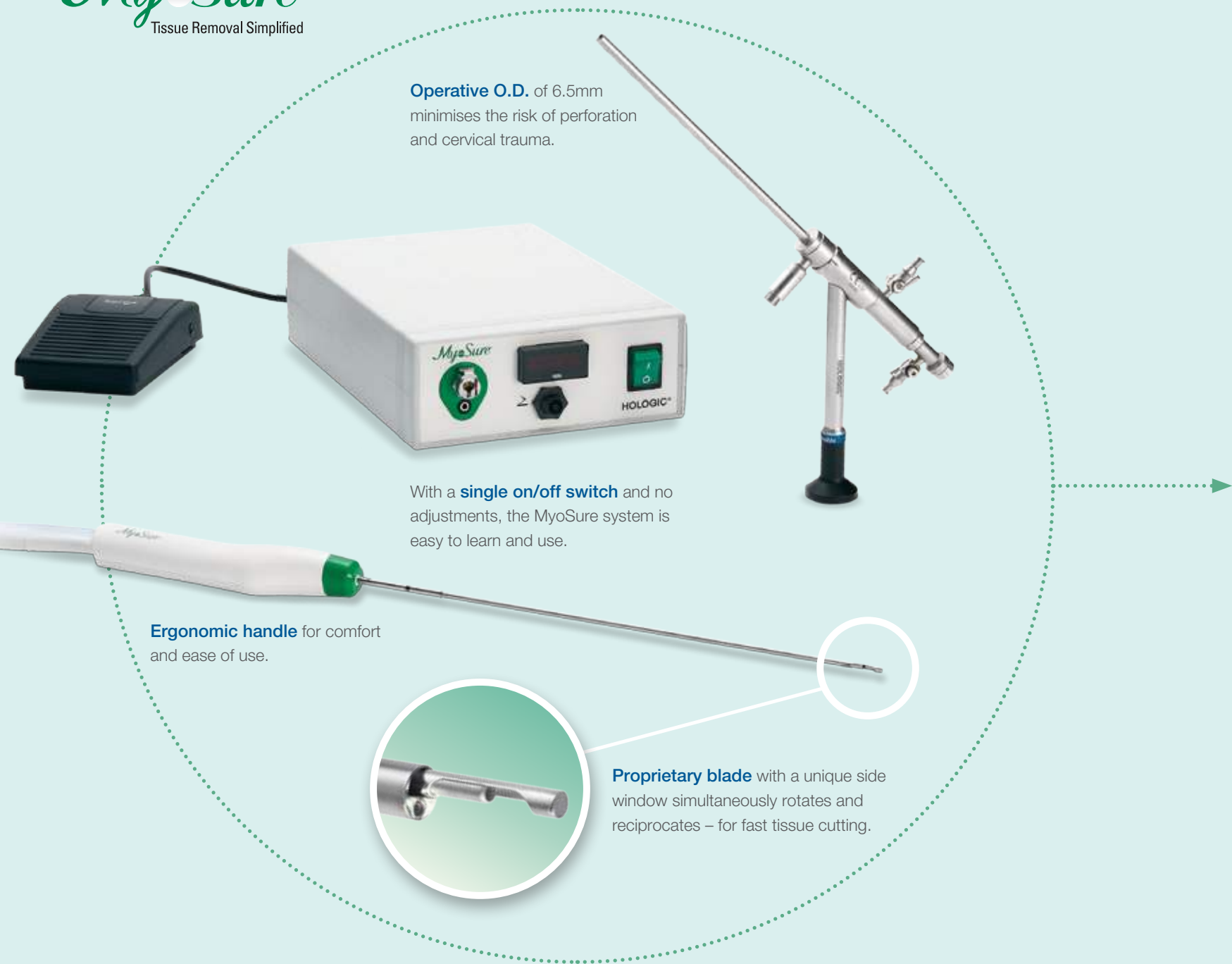
MyoSure[®]
Tissue Removal Simplified

Operative O.D. of 6.5mm
minimises the risk of perforation
and cervical trauma.

With a **single on/off switch** and no
adjustments, the MyoSure system is
easy to learn and use.

Ergonomic handle for comfort
and ease of use.

Proprietary blade with a unique side
window simultaneously rotates and
reciprocates – for fast tissue cutting.





Tissue trap in the canister preserves pathology.

Confidence

- No energy – retains uterine form and function
- Tissue cutting and removal in a single step
- Specimen integrity – preserve histology with mechanical mechanism of action

Simplicity

- Simple set-up and operating technique
- Perform diagnostic and therapeutic procedures with one system
- Simultaneous tissue cutting and suction to maintain a clear view

Assurance

- Normal saline and short procedures minimises risk of fluid overload
- Side cutting window provides more control for removal of targeted pathology
- Efficient and visual confirmation of targeted pathology removal

Convenience

- Use MyoSure® with most fluid management systems or optimise performance with the Aquilex fluid control system
- Maintain efficient workflow and minimise disruption
- Built-in storage on Aquilex stand for MyoSure® control unit

Ordering information

MYOSURE® HYSTEROSCOPIC TISSUE REMOVAL SYSTEM

DESCRIPTION	ORDER NUMBER
MyoSure Tissue Removable Device Single	10-401
MyoSure TRD 3-pack	10-403
MyoSure Control Unit	10-500
MyoSure Classic Hysteroscope and Outflow Channel	40-250
MyoSure Scope Seal Set of 10	40-902
MyoSure Removable Outflow Channel	40-201
Replacement Light Guide Adapters (Storz and Wolf)	ASY-04996
Polishing Paste - 3 tubes per pack	40-905
Hysteroscope / Outflow channel End Cap	40-904
MyoSure Lite Tissue Removal Device	30-401 LITE
MyoSure XL Tissue Removal Device	50-401 XL
MyoSure XL Hysteroscope and Outflow Channel	50-250XL
MyoSure XL Outflow channel	50-201XL

AQUILEX™ FLUID CONTROL SYSTEM

DESCRIPTION	ORDER NUMBER
Aquilex Fluid Control System	AQL-100
Aquilex Tubeset (inflow and outflow) x 10	AQL-112
Inflow tubeset x 10	AQL-110
Inflow tube Single	AQL-110S
Outflow tubeset x 10	AQL-111
Outflow tube Single	AQL-111S
Replacement Canister Ring (1)	AQL-200
Replacement MyoSure Power Cord	AQL-213
Aquilex Pump	AQL-100P
Aquilex Cart/Scale	AQL-100CS
Replacement Vacuum tube set	AQL-114

To place an order, contact Hologic Customer Service at: 01293-522080 or uk@hologic.com

HOLOGIC®

Hologic UK Ltd.

Link 10, Napier Way, Crawley, West Sussex, RH10 9RA.

Tel: +44 (0) 1293 522080 Fax: +44 (0) 1293 528010

email: uk@hologic.com www.hologic.com

Aquilex™

Fluid Control System

Making the most of MyoSure.

The Aquilex fluid control system is designed to give you the highest degree of control during MyoSure hysteroscopic tissue removal procedures.

As the MyoSure tissue removal device simultaneously cuts and removes polyps and fibroids, the Aquilex fluid control system balances steady fluid inflow with active suction to optimise uterine distention and provide a clear field of view – free from tissue debris.

All-in-one system provides:

- A fluid pump capable of 800 ml/min inflow for optimal visualisation
- Two integrated vacuum providing all suction needs
- Adjustable suction for the MyoSure tissue removal device allowing the ability to adjust and control tissue removal rate



Tissue is simultaneously cut and suctioned into tissue trap in the canister to preserve pathology.





Press “Prime” Button
Eliminates any air from the tubing.

Set deficit limit
Adjust deficit alarms to as high as 2500mL for a MyoSure® procedure.

Set Intrauterine Pressure
Allows automated, consistent level of distention in the cavity throughout the procedure.

Aquilex™
Fluid Control System

- Automatic lumen calibration optimises intrauterine pressure for consistent distention and visualisation with any diameter hysteroscope
- Add or remove bags without pausing
- Non-weight-based inflow volume measurement eliminates the risk of inaccurate deficit readings
- Pause function stops both inflow and suction pumps and locks deficit reading when a canister change is necessary

Ordering Information

DESCRIPTION	ORDER NUMBER
Aquilex Fluid Control System	AQL-100
Aquilex Inflow Tubeset (box of 10)	AQL-110
Aquilex Outflow Tubeset (box of 10)	AQL-111

To place an order, contact Hologic Customer Service at: 01293-522080 or uk@hologic.com

Hologic UK Ltd., Link 10, Napier Way, Crawley, West Sussex, RH10 9RA.
Tel: +44 (0) 1293 522080 Fax: +44 (0) 1293 528010 email: uk@hologic.com www.hologic.com

© Hologic 2013. All rights reserved. Printed in the United Kingdom. Specifications are subject to change without prior notice. Hologic, Aquilex, and MyoSure are trademarks and/or registered trademarks of Hologic, Inc. and/or its subsidiaries in the United States and/or other countries.

0° direction of view and 80° field of view offer direct visualisation of tissue removal, as well as a panoramic view of the uterine cavity.



Small 6.25 mm outer diameter minimises cervical dilation.

Continuous flow with removable outflow channel.

MyoSure® ROD LENS HYSTEROSCOPE

A single system for diagnostic and operative procedures.

You can perform every stage of polyp and fibroid assessment and removal with a single MyoSure scope. It's the fast, easy way to see the anatomy and guide the procedure.

- Minimise disruption to procedural workflow
- Diagnose and treat patients using one versatile tool
- Maximise staff efficiency
- Decrease reprocessing requirements

Unique seal technology prevents fluid splash-back and is compatible with 5-9 Fr. instruments.



“ I much prefer the MyoSure scope to the ones I have been using. ”
The image quality is superior and its ease of use is impressive.

– Dr. Dudley Brown, Florida

MyoSure[®] ROD LENS HYSTEROSCOPE

ALL stages of the procedure performed with ONE scope!
Convenient for you, your staff and patients.



Direct Visualisation and Assessment of Uterine Cavity

Rod lens technology provides a clear, bright image with enhanced resolution and superior colour contrast.



Treatment of Pathology

The MyoSure tissue removal device is inserted through the positioned MyoSure scope to simultaneously cut and remove tissue.

Ordering Information

DESCRIPTION	ORDER NUMBER
MyoSure 6.25 mm O.D. Rod Lens Hysteroscope with Removable Outflow Channel	40-250
MyoSure XL 7.25 mm O.D. Rod Lens Hysteroscope with Removable Outflow Channel	50-250XL

To place an order, contact Hologic Customer Service at: 01293-522080 or uk@hologic.com

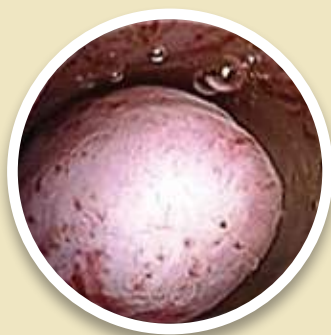
Hologic UK Ltd., Link 10, Napier Way, Crawley, West Sussex, RH10 9RA.
Tel: +44 (0) 1293 522080 Fax: +44 (0) 1293 528010 email: uk@hologic.com www.hologic.com

© Hologic 2013. All rights reserved. Printed in the United Kingdom. Specifications are subject to change without prior notice. Hologic, Aquilex, and MyoSure are trademarks and/or registered trademarks of Hologic, Inc. and/or its subsidiaries in the United States and/or other countries.

HOLOGIC[®]

GBR-13-020-EN-A

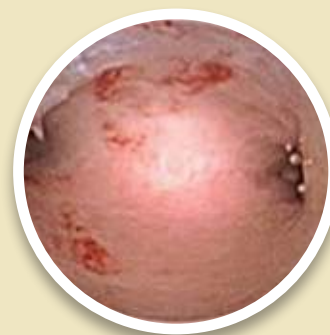
Designed to remove a 3 cm polyp in less than 2 minutes



before



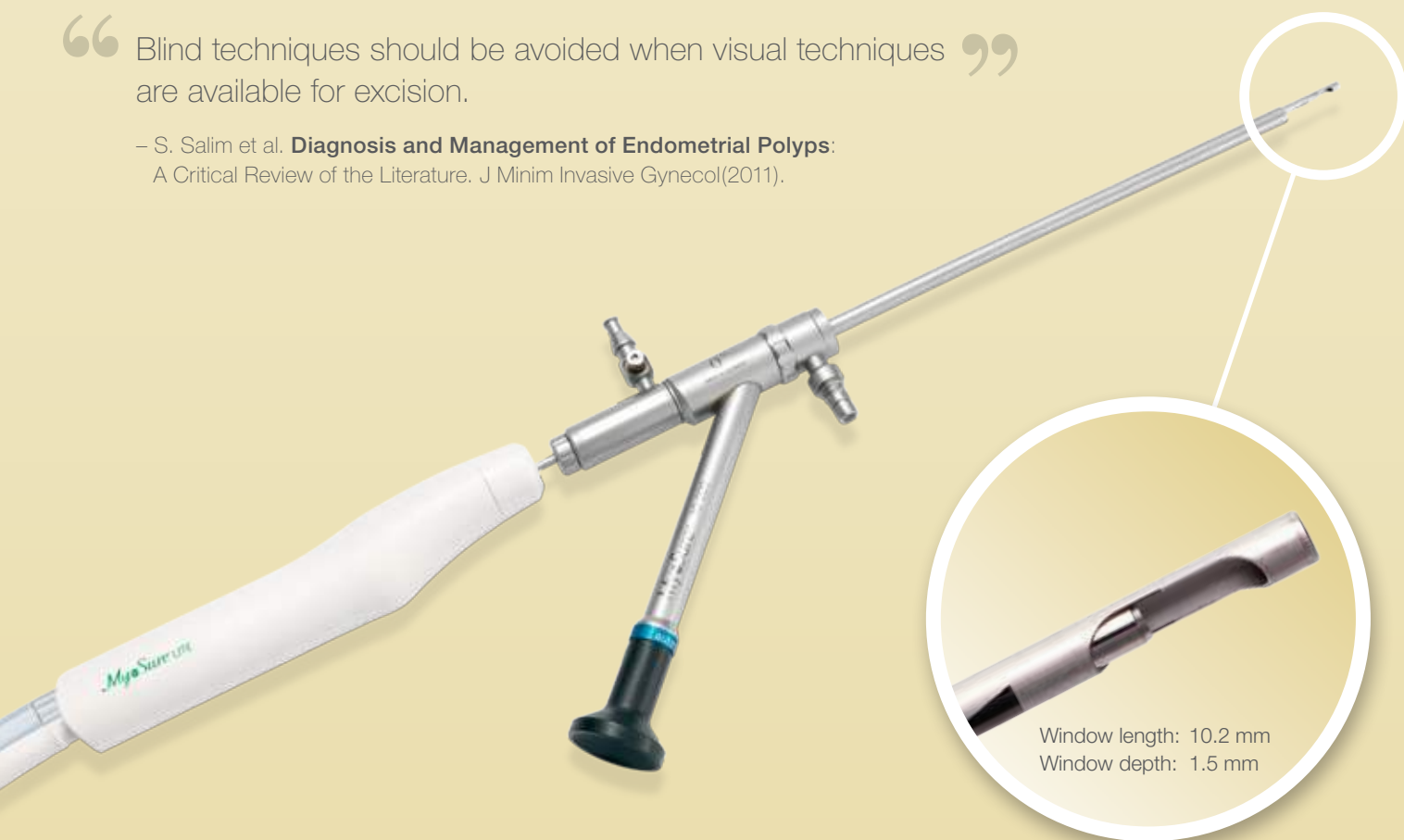
during



after

“ Blind techniques should be avoided when visual techniques are available for excision. ”

– S. Salim et al. **Diagnosis and Management of Endometrial Polyps:**
A Critical Review of the Literature. J Minim Invasive Gynecol(2011).



Window length: 10.2 mm
Window depth: 1.5 mm

MyoSure® LITE
Polyp Removal Simplified

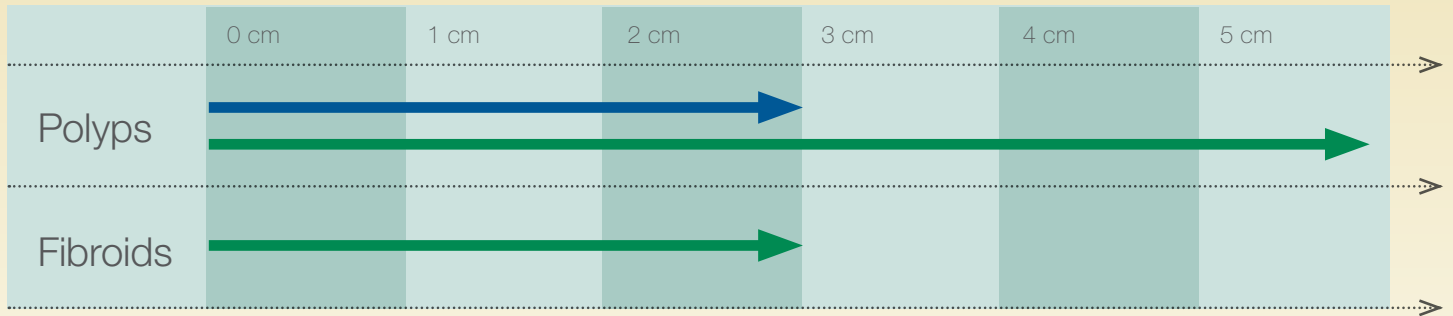
MyoSure LITE window size ideal for softer, smaller tissue.

The right choice for visualised D&C and small polyps.

Provides a simple, efficient, and visual technique for the complete removal of polyps \leq 3 cm.

- 3 mm stainless steel blade
- Compatible with MyoSure 6.25 mm and MyoSure XL 7.25 mm hysteroscopes
- 7.0 grams/min tissue removal (polyp tissue)

Device recommendation based on pathology type and size:



MyoSure[®] LITE ■ MyoSure[®] ■

MyoSure LITE Device



MyoSure Rod Lens Hysteroscope



Ordering Information

DESCRIPTION	ORDER NUMBER
MyoSure LITE Tissue Removal Device (3 devices per box)	30-403LITE
MyoSure 6.25 mm Rod Lens Hysteroscope with Removable Outflow Channel	40-250
MyoSure XL 7.25 mm Rod Lens Hysteroscope with Removable Outflow Channel	50-250XL

To place an order, contact Hologic Customer Service at: 01293-522080 or uk@hologic.com

Hologic UK Ltd., Link 10, Napier Way, Crawley, West Sussex, RH10 9RA.
 Tel: +44 (0) 1293 522080 Fax: +44 (0) 1293 528010 email: uk@hologic.com www.hologic.com

© Hologic 2013. All rights reserved. Printed in the United Kingdom. Specifications are subject to change without prior notice. Hologic, Aquilex, and MyoSure are trademarks and/or registered trademarks of Hologic, Inc. and/or its subsidiaries in the United States and/or other countries.

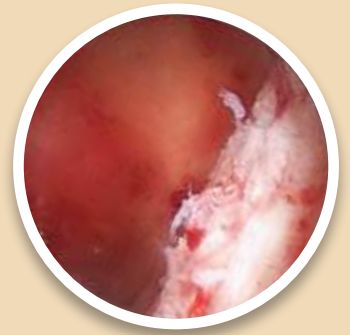
Designed to remove
a 3 cm fibroid in less
than 10 minutes



before



during



after



Window length: 14 mm
Window depth: 1.8 mm

MyoSure[®]
Tissue Removal Simplified

MyoSure blade material and window size make tissue removal easy.

The versatile choice.

Ideal treatment option for removal of intrauterine pathology including all polyps and fibroids less than or equal to 3 cm.

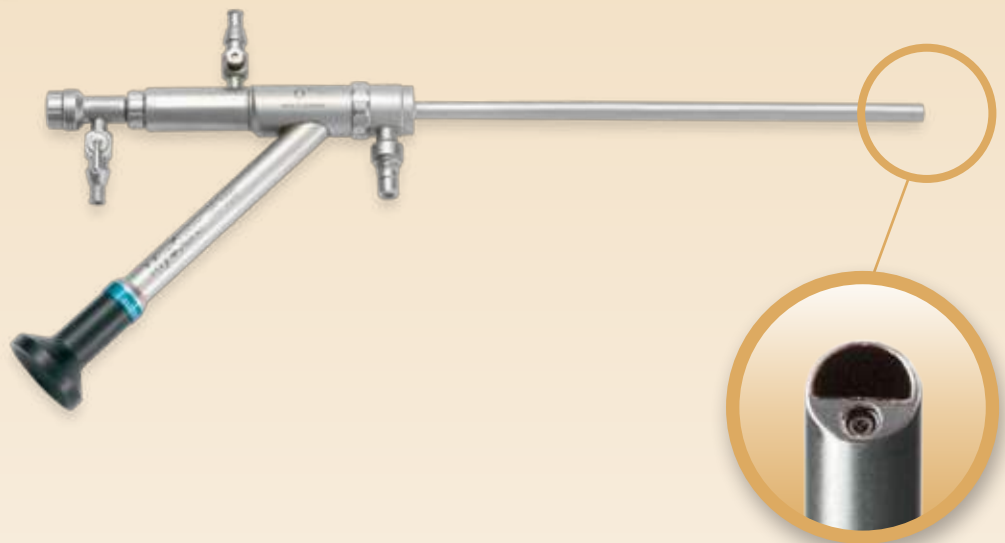
- 3 mm coated stainless steel blade with high wear resistance
- Compatible with MyoSure 6.25 mm and MyoSure XL 7.25 mm hysteroscopes
- 1.5 grams/min removal of fibroid tissue



MyoSure Device



MyoSure Rod Lens Hysteroscope



“ MyoSure eliminates many of the difficulties that gynecologists have faced in the past, preventing them from doing hysteroscopic myomectomies. It is now feasible for the average gynecologist to learn this procedure and offer more treatment options to patients with fibroids instead of just offering a hysterectomy or referring her to another doctor. ”

– Dr. Robert Zurawin, Houston, TX

Ordering Information

DESCRIPTION	ORDER NUMBER
MyoSure Tissue Removal Device (3 devices per box)	10-403
MyoSure 6.25 mm Rod Lens Hysteroscope with Removable Outflow Channel	40-250
MyoSure XL 7.25 mm Rod Lens Hysteroscope with Removable Outflow Channel	50-250XL

To place an order, contact Hologic Customer Service at: 01293-522080 or uk@hologic.com

Hologic UK Ltd., Link 10, Napier Way, Crawley, West Sussex, RH10 9RA.
Tel: +44 (0) 1293 522080 Fax: +44 (0) 1293 528010 email: uk@hologic.com www.hologic.com

© Hologic 2013. All rights reserved. Printed in the United Kingdom. Specifications are subject to change without prior notice. Hologic, Aquilex, and MyoSure are trademarks and/or registered trademarks of Hologic, Inc. and/or its subsidiaries in the United States and/or other countries.

HOLOGIC[®]

GBR-13-020-EN-A

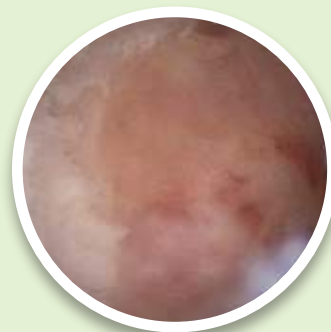
Designed to remove a 5 cm fibroid in less than 15 minutes



before



during



after

“ With the use of the MyoSure XL device, women can have certain types of fibroids removed as a simple, outpatient procedure without invasive surgery. This allows a woman to keep her uterus and return to normal activity soon after the surgery. ”

– Dr. Michael Randell, Atlanta, GA



MyoSure[®] XL
Fibroid Removal Simplified

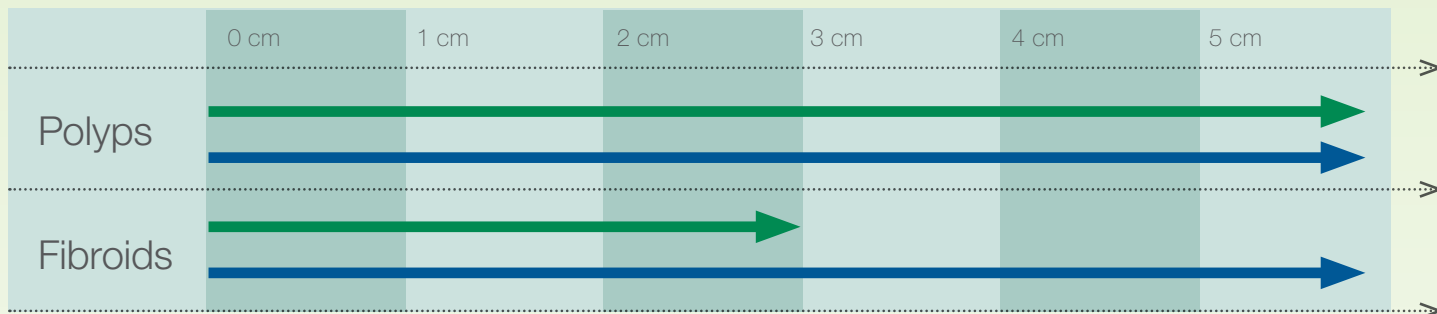
MyoSure XL blade material and window size optimised for removal of large fibroids.

The powerful choice.

All the features of the MyoSure device with a more robust design for large fibroids or when you want to experience cutting efficiency.

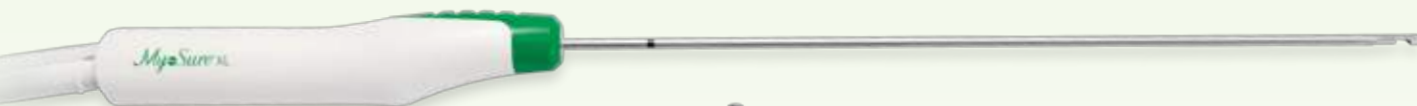
- 4 mm coated stainless steel blade with high wear resistance
- Compatible with MyoSure XL 7.25 mm hysteroscope
- 4.3 grams/min removal of fibroid tissue

Device recommendation based on pathology type and size:



MyoSure ■ MyoSure XL ■

MyoSure XL Device



MyoSure XL Rod Lens Hysteroscope



Ordering Information

DESCRIPTION	ORDER NUMBER
MyoSure XL Tissue Removal Device (3 devices per box)	50-403
MyoSure XL 7.25 mm Rod Lens Hysteroscope with Removable Outflow Channel	50-250XL

To place an order, contact Hologic Customer Service at: 01293-522080 or uk@hologic.com

Hologic UK Ltd., Link 10, Napier Way, Crawley, West Sussex, RH10 9RA.
 Tel: +44 (0) 1293 522080 Fax: +44 (0) 1293 528010 email: uk@hologic.com www.hologic.com

© Hologic 2013. All rights reserved. Printed in the United Kingdom. Specifications are subject to change without prior notice. Hologic, Aquilex, and MyoSure are trademarks and/or registered trademarks of Hologic, Inc. and/or its subsidiaries in the United States and/or other countries.

MyoSure Technical Data Sheet

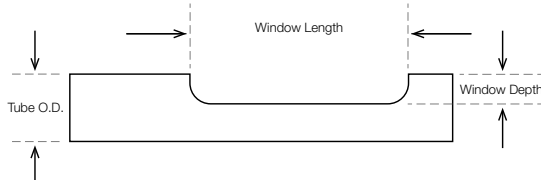


Tissue Removal Devices


	<i>MyoSure</i> [®] LITE <small>Polyp Removal Simplified</small>	<i>MyoSure</i> [®] <small>Tissue Removal Simplified</small>	<i>MyoSure</i> [®] XL <small>Fibroid Removal Simplified</small>
Tissue recommended	Polyps ≤ 3 cm	All polyps Fibroids ≤ 3 cm	All intrauterine pathology including large fibroids (any fibroid where you want to experience cutting efficiency)
Device outer diameter	3 mm	3 mm	4 mm
Working length	32 cm	32 cm	32 cm
Scope compatibility	MyoSure, MyoSure XL	MyoSure, MyoSure XL	MyoSure XL
Blade material	Stainless steel	Coated stainless steel with ultra hardness and high wear resistance	Coated stainless steel with ultra hardness and high wear resistance
Performance specifications	3 cm polyp <2 minutes	3 cm fibroid <10 minutes	5 cm fibroid <15 minutes
Tissue removal rate	7.0 g/min (polyp tissue)	1.5 g/min (fibroid tissue)	4.3 g/min (fibroid tissue)

Cutting Speed: 8075 RPM and 3 cycles/second

	Window Length	Window Depth	Outer Tube O.D.	Window Size
Window Type	mm	mm	mm	mm ³
MyoSure LITE	10.2	1.5	3.0	31
MyoSure	14.0	1.8	3.0	54
MyoSure XL	14.0	2.4	4.0	98



MyoSure LITE MyoSure MyoSure XL



Note: not actual size

MyoSure

Technical Data Sheet

MyoSure[®]
Tissue Removal Simplified

MyoSure Hysteroscopes

	<i>MyoSure</i> [®]	<i>MyoSure</i> [®] XL
Direction of view	0°	0°
Outer diameter	6.25 mm	7.25 mm
Seals	MyoSure single use seal	MyoSure single use seal
Working length	18.4 cm	18.4 cm

Ordering Information

Description	Order Number
MyoSure [®] Control Unit	10-500
MyoSure [®] LITE Hysteroscopic Tissue Removal Device (Pack of 3)	30-403LITE
MyoSure [®] Hysteroscopic Tissue Removal Device (Pack of 3)	10-403
MyoSure [®] XL Hysteroscopic Tissue Removal Device (Pack of 3)	50-403XL
MyoSure [®] Rod Lens Hysteroscope with Removable Outflow Channel	40-250
MyoSure [®] XL Rod Lens Hysteroscope with Removable Outflow Channel	50-250XL
MyoSure [®] Rod Lens Scope Seal Set (Pack of 10)	40-902

To place an order, contact Hologic Customer Service at
01293 522080 or uk@hologic.com

Hologic UK Ltd.

Link 10, Napier Way, Crawley, West Sussex, RH10 9RA.
Tel: +44 (0) 1293 522080 Fax: +44 (0) 1293 528010
email: uk@hologic.com www.hologic.com