

CombiFlash[®] Rf⁺ PurIon

The CombiFlash Rf⁺ PurIon takes the guesswork out of your purification routine with mass directed purification. Simply instruct the Flash system to collect only those peaks matching the mass of your target compound. Eliminate the need for further analysis. Save time in post purification processing.

As with all other CombiFlash models, Teledyne Isco's intuitive PeakTrak[®] software lets you access all the commands you need from a single touchscreen. Key features include:

- △ Real-time method editing and control
- △ Touch-and-drag gradients
- △ Real time and post run mass spectral data display

Verify Before You Purify

The method development screen facilitates confirmation of the detectable ions of your product, and helps you identify and set appropriate detection parameters prior to the purification process.



Standard Features

- △ Flow rates to 200 mL/min at pressures up to 200 psi (13.8 bar)
- △ Compatible with column sizes from 4 to 330 grams
- △ Mass range from 50 to 1200 Dalton with 1 Dalton resolution
- △ Use with your choice of ELSD, UV, or UV-Vis detectors
- △ Real-time and post-run MS and UV spectral display

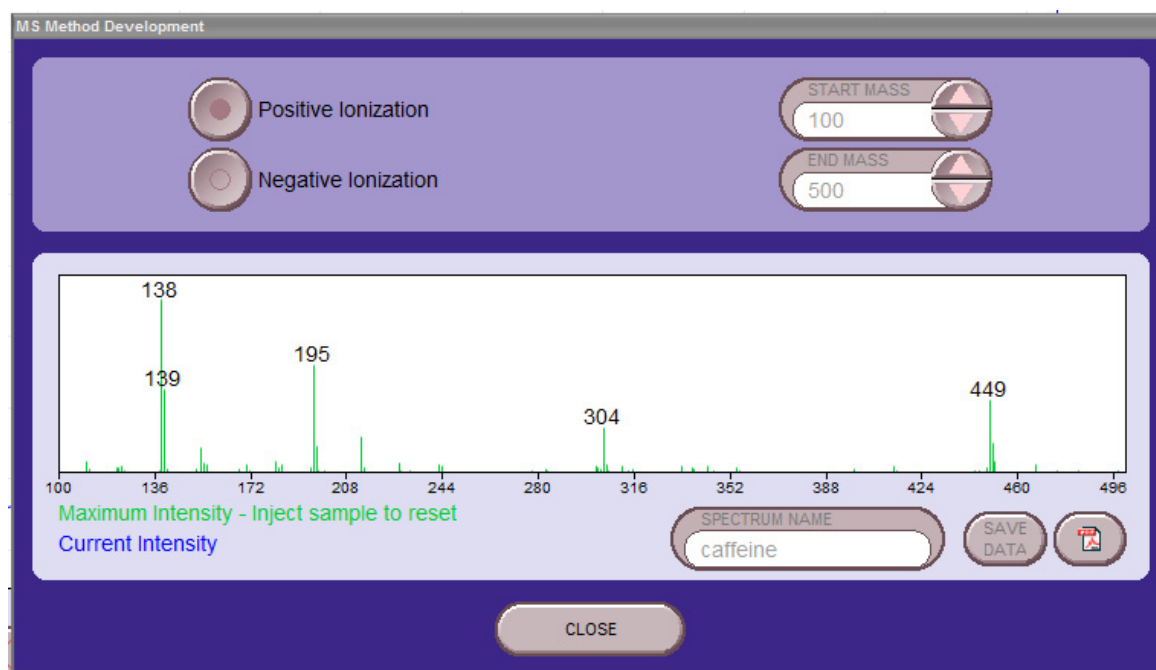


Table 1: Specifications

Flow Rate Range	1 - 200 mL/min
Pressure Limit	200 psi (13.8 bar)
UV and UV- Vis Detection	Variable UV 200 - 400 nm standard. Variable UV-Vis 200 - 800 nm option
ELSD Detection	Option that can be combined with either UV or UV-Vis
Mass Spectrometry Detection	50 – 1200 Dalton, 1 Dalton Resolution
	Electrospray Ionization (ESI) or optional Atmospheric Pressure Chemical Ionization (APCI)
	Positive or Negative Ionization Mode
SIM Sensitivity	10 pg Reserpine, 100:1 S/N (RMS) with SIM of m/z
Number of Solvents	Binary gradient with any two of four solvents; A third solvent can be used to add modifier at a fixed percentage.
Programmable Gradients	Linear, step, isocratic
Sample Injection	Direct
User Interface	10.4" touchscreen
Software	PeakTrak
Fraction Collector	Internal
Dimensions (H x W x D)	CombiFlash Rf: 24 x 14 x 17 in (60 x 36 x 43 cm)
	Mass Spectrometer 26 x 11 x 22 in (66 x 28 x 56 cm)
	Roughing Pump 10 x 9 x 18 in (26 x 23 x 46 cm)

Table 2: CombiFlash Rf+ Purlon Flash/Mass Systems

68-5230-041	CombiFlash Rf ⁺ Purlon Automated Flash Chromatography/Mass Spectrometry System. Includes Mass Spectrometer, Fluid Interface, and 200-360nm UV variable wavelength detector.
68-5230-042	CombiFlash Rf ⁺ Purlon Automated Flash Chromatography/Mass Spectrometry System. Includes Mass Spectrometer, Fluid Interface, and 200-780nm UV-Vis variable wavelength detector.
68-5230-043	CombiFlash Rf ⁺ Purlon Automated Flash Chromatography/Mass Spectrometry System. Includes Mass Spectrometer, Fluid Interface, integrated ELSD and 200-360nm UV variable wavelength detector.
68-5230-044	CombiFlash Rf ⁺ Purlon Automated Flash Chromatography/Mass Spectrometry System. Includes Mass Spectrometer, Fluid Interface, integrated ELSD and 200-780nm UV-Vis variable wavelength detector.

Upgrade Options

68-5237-050	CombiFlash Purlon Mass Spectrometer and Fluid Interface. This option is used to upgrade CombiFlash Rf+ systems (P/N 68-5230-031 and 68-5230-032) into a CombiFlash Rf ⁺ Purlon Automated Flash Chromatography/Mass Spectrometry System. It is also used to upgrade CombiFlash Rf ⁺ Lumen systems (P/N 68-5230-033 and 68-5230-034).
68-5237-051	CombiFlash Purlon Mass Spectrometer, Fluid Interface, and upgraded processor board. This option is used to upgrade CombiFlash Rf ⁺ systems (P/N 68-5230-021 and 68-5230-022) into a CombiFlash Rf ⁺ Purlon Automated Flash Chromatography/Mass Spectrometry System. It is also used to upgrade CombiFlash Rf ⁺ Lumen systems (P/N 68-5230-023 and 68-5230-024). This option can also add mass spectrometry capabilities to CombiFlash Rf 200 and CombiFlash Rf 200i systems. Installation of the processor board requires a factory trained service specialist.
68-5237-081	Fluid Interface. This option allows an end user to interface a third party mass spectrometer to any Teledyne Isco CombiFlash Rf system. Mass spectrometer parameters are not controlled via PeakTrak. Mass spectrometer must be capable of sending an analog signal out to the external detector port on the CombiFlash Rf.

All CombiFlash Rf⁺ Purlon systems have automatic self-cleaning injection valve, integrated solvent monitoring, and real-time and post-run spectral display of both UV and MS data.

CombiFlash

® 4700 Superior Street USA and Canada (800) 228-4373
 Lincoln, NE 68504 USA Fax: (402) 465-3022
 Tel: (402) 464-0231 E-Mail: IscoInfo@teledyne.com
 Teledyne Isco reserves the right to change specifications without notice.
 ©2013 Teledyne Technologies Incorporated. L-5169 01/14



**Certified
ISO 9001**