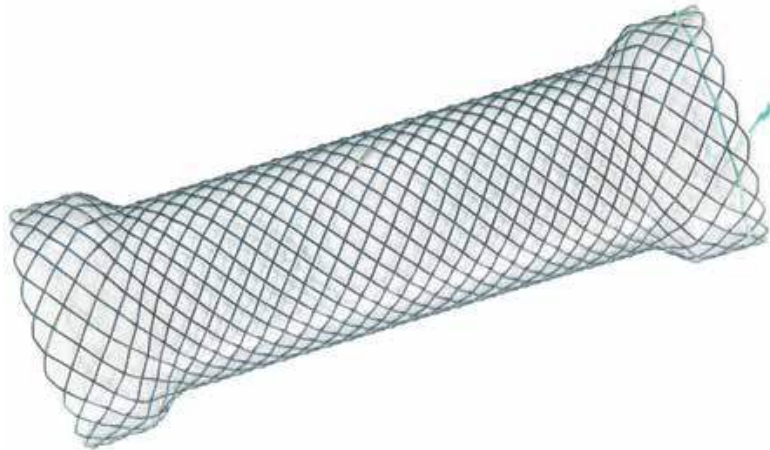




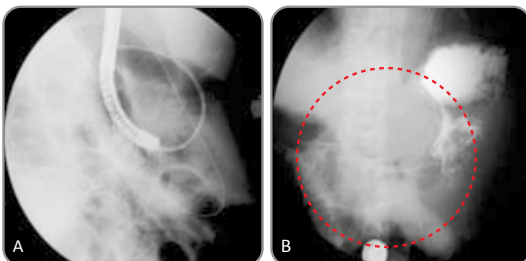
S Pyloric / duodenal stent (Covered)

for benign and malignant gastric outlet obstruction



Feature

- **Fixed cell with braided construction**
 - High flexibility and optimal radial force
- **Silicone covering and soft round ends**
 - Reduce tissue ingrowth and hyperplasia reaction
- **Visible green suture for easy removal**
- **Radiopaque marker** : 4(four) at both ends & 2(two) in the middle



- ◀ **A.** Self-expandable metal stent was passed over the guidewire through the forceps channel of the endoscope, and placed at the mid-portion of the stenosis
B. The catheter was removed slowly and the stent was expanded

[doi : 10.1111 / j.1440-1746.2007
Journal of Gastroenterology and Hepatology 2008]

Ordering Information

TTS (Through The Scope)					OTW (Over The Wire)												
Code	Stent		Delivery		Code	Stent		Delivery									
	Diameter (mm)	Length (cm)	Profile (Fr)	Usable Length (cm)		Diameter (mm)	Length (cm)	Profile (Fr)	Usable Length (cm)								
PST1806F	18	6	10.5	180	PS1806F	18	6	16	135								
PST1808F		8			PS1808F		8										
PST1810F		10			PS1810F		10										
PST1812F		12			PS1812F		12										
PST1814F		14			PS1814F		14										
PST1815F		15			PS1815F		15										
PST2006F	20	6			10.5	180	PS2006F			20	6	20	135				
PST2008F		8					PS2008F				8						
PST2010F		10					PS2010F				10						
PST2012F		12					PS2012F				12						
PST2014F		14					PS2014F				14						
PST2015F		15					PS2015F				15						
											PS2206F			22	6	22	135
											PS2208F				8		
							PS2210F	10									
							PS2212F	12									
							PS2214F	14									
							PS2215F	15									
							PS2406F	24	6	22	135						
							PS2408F		8								
					PS2410F	10											
					PS2412F	12											
					PS2414F	14											
					PS2415F	15											
					PS2606F	26	6	22	135								
					PS2608F		8										
					PS2610F		10										
					PS2612F		12										
					PS2614F		14										
					PS2615F		15										
					PS2806F	28	6					22	135				
					PS2808F		8										
					PS2810F		10										
					PS2812F		12										
					PS2814F		14										
					PS2815F		15										

* Available 220cm delivery system
 Coding : PST**__F-22

Released Article

* Covered expandable nitinol stents for malignant gastroduodenal obstructions GASTROENTEROLOGY, 1440-1746. 2007 Eun H Seo



UK Distributors
 Aquilant Interventional
 Aquilant House, Units B1-B2
 Bond Close, Kingsland Business Park
 Basingstoke, Hampshire, RG24 8PZ

T: +44 (0) 845 6024 007
 F: +44 (0) 1256 365486
 E: contactus@aquilantinterventional.com
 W: www.aquilantinterventional.com

Ordering Information

TTS (Through The Scope)

► Distal end bare

Code	Stent		Delivery	
	Diameter (mm)	Length (cm)	Profile (Fr)	Usable Length (cm)
PST1806H	18	6	10.5	180
PST1808H		8		
PST1810H		10		
PST1812H		12		
PST1814H		14		
PST1815H		15		
PST2006H	20	6		
PST2008H		8		
PST2010H		10		
PST2012H		12		
PST2014H		14		
PST2015H		15		

* Available 220cm delivery system

Coding : PST**_H-22

OTW (Over The Wire)

► Distal end bare

Code	Stent		Delivery		
	Diameter (mm)	Length (cm)	Profile (Fr)	Usable Length (cm)	
PS1806H	18	6	16	135	
PS1808H		8			
PS1810H		10			
PS1812H		12			
PS1814H		14			
PS1815H		15			
PS2006H	20	6			
PS2008H		8			
PS2010H		10			
PS2012H		12			
PS2014H		14			
PS2015H		15			
PS2206H	22	6			20
PS2208H		8			
PS2210H		10			
PS2212H		12			
PS2214H		14			
PS2215H		15			
PS2406H	24	6	22		
PS2408H		8			
PS2410H		10			
PS2412H		12			
PS2414H		14			
PS2415H		15			
PS2606H	26	6			
PS2608H		8			
PS2610H		10			
PS2612H		12			
PS2614H		14			
PS2615H		15			
PS2806H	28	6			
PS2808H		8			
PS2810H		10			
PS2812H		12			
PS2814H		14			
PS2815H		15			



Aquilant Interventional

UK Distributors

Aquilant Interventional
Aquilant House, Units B1-B2
Bond Close, Kingsland Business Park
Basingstoke, Hampshire, RG24 8PZ

T: +44 (0) 845 6024 007
F: +44 (0) 1256 365486
E: contactus@aquilantinterventional.com
W: www.aquilantinterventional.com