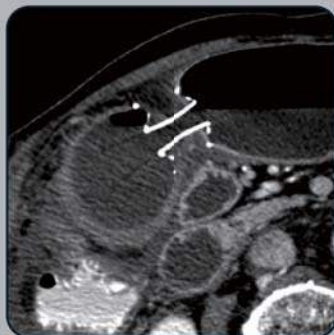
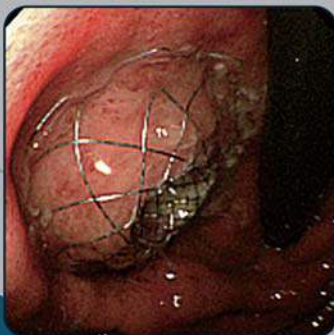
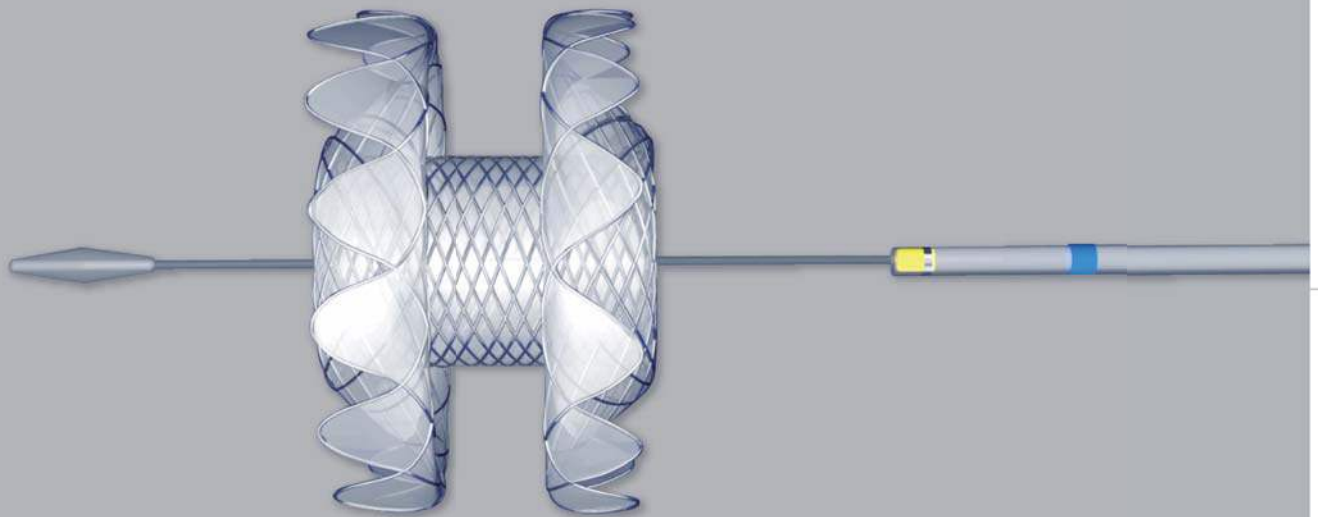




SPAXUS™ Stent

for drainage of pancreatic pseudocyst and gallbladder



"Placement of the new stent through a cholecystogastrostomy tract with EUS resulted in the complete fusion of the walls, like a single organ, with no leakage."

- ◀ A. Fully deployment stent on a pancreatic fluid collection
- B. CT showing lumen apposition stent between the stomach and gallbladder

[GASTROINTESTINAL ENDOSCOPY Vol. 79, No. 6 : 2014]

MANUFACTURER : TAEWOONGMEDICAL Co.,Ltd 14, Gojeong-ro, Wolgot-myeon, Gimpo-si, Gyeonggi-do,
Korea 415-873 TEL:+82.31.996.0641~4 FAX:+82.31.996.0645~6

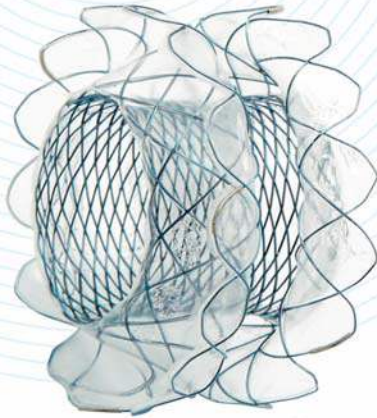
SALES OFFICE Bldg.C 4F, Daebangtriplaon BusinessTower, 158 Haneulmaeul-ro, Ilsandong-gu, Goyang-si, Gyeonggi-do,
Korea 410-315 TEL:+82.31.904.6153 FAX:+82.31.904.6157

E-MAIL:sales@stent.net www.stent.net



Taewoong Niti-S™ SPAXUS™ Stent

for the drainage of pancreatic pseudocyst and gallbladder

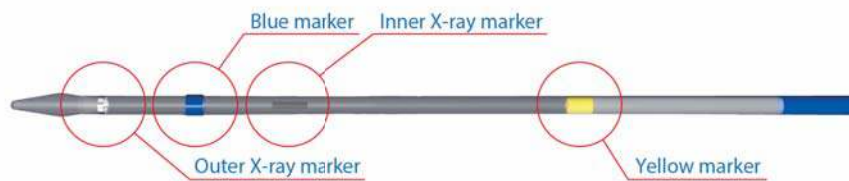


● Features

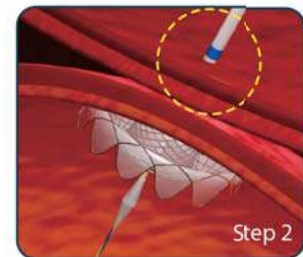
- Dual flange prevents migration and maintains lumen apposition
- Fully silicone coated design to prevent leakage and provide easy removal
- Simple and easy procedure of stent deployment
- Available in various diameter, designed to optimize drainage and Necrosectomy

● **Radiopaque markers** : three at both ends & two in the middle

● Deployment process



- Step 1. When the **outer x-ray marker** overlaps with the **inner x-ray marker**
→ Distal flange is completely opened
- Step 2. When the **blue marker** is visible under endoscopic view
→ Start opening proximal flange



● Ordering Information

Products	Code	Stent			Delivery	
		Body Diameter (mm)	Flare Diameter (mm)	Length (cm)	Profile (Fr)	Usable Length (cm)
	SS0802FW	8	23	2	10	180
	SS1002FW	10	25			
	SS1602FW	16	31			

Released Article

* **A newly designed fully covered metal stent for lumen apposition in EUS-guided drainage and access: a feasibility study (with videos)**

Gastrointestinal Endoscopy 2014, Vol. 79, No. 6 Jong Ho Moon, MD

* **Novel EUS-guided gastrojejunostomy technique using a new double-balloon enteric tube and lumen-apposing metal stent (with videos)**

Gastrointestinal Endoscopy 2013, Vol. 78, No. 6 Takao Itoi, MD, PhD, FASGE et al.

