

# Cholangioscopy Product Brochure

We provide market-leading,  
unique and innovative  
devices to assist clinicians  
in delivering improved  
patient outcomes





**PASSION**



**TRANSPARENCY**



**INNOVATION**



**SIMPLICITY**

## About Us

We bring innovative, specialist and clinically effective products to Endoscopy and Radiology departments across the UK. We distribute a diverse range of intervention products on behalf of internationally recognised brands, ensuring that the needs of our customers are met.

## Our Partners

We are partnered with leading manufacturers providing our innovative cholangioscopy solutions including Leinzett for a portable video cholangioscope and Walz for a highly efficient Electrohydraulic Lithotripsy (EHL) system.

## Our Aims

We provide market-leading, unique and innovative devices to assist clinicians in delivering improved patient outcomes. Our bespoke consultative service, including training and clinical support, provides clinicians with more treatment options, reducing re-intervention rates and increasing efficiency. This leads to better solutions for the patient, clinicians and trusts.

***Leinzett***

 **WALZ**

## Flexible video cholangioscope

A single use imaging catheter designed for the hepatobiliary and pancreatic system, suitable for ERCP, PTC D surgeries.

Direct high-definition imaging, paired with diagnostic accessories and peripheral products to provide flexible and diverse solutions

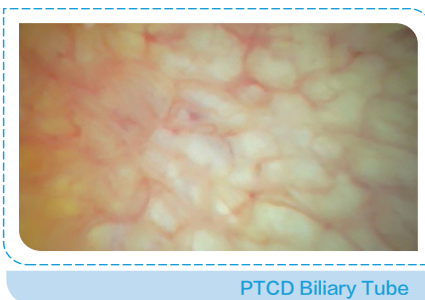
# Leinzett



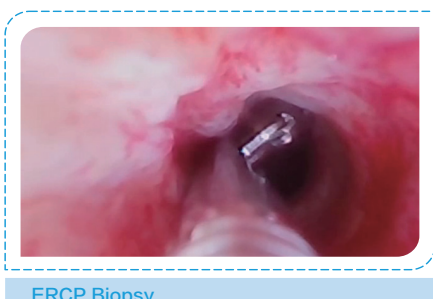
World's first scale marking, fast intraoperative distance measurement, and accurate position depth identification



ERCP Biliary Tube



PTCD Biliary Tube



ERCP Biopsy



ERCP Direct Vision Lithotripsy



## Product features:

- Portable and simple operation
- Compatible with laptops, tablets, mobile phones, and medical monitors. Supports PIP/POP display
- 2mm, 1.6mm and 1.2mm working channels available
- 4 way and 2 way angulation
- High quality image – 160,000 pixels
- LED light source
- No capital commitment required

## Specifications

Model	Actual Insertion Outer Diameter	Actual Working Channel	Field of View	Working Length
LAN-EP-2612	≤2.5mm/7.5Fr	≤1.2mm/3.6Fr	120°	2140mm
LAN-EP-3516	≤3.0mm/9.0Fr	≤1.6mm/4.8Fr	120°	2140mm
LAN-EP-3522	≤3.5mm/10.5Fr	≤2.0mm/6.0Fr	120°	2140mm



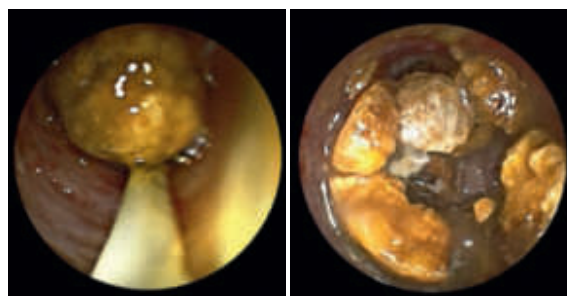
## Compatible Accessories

### Disposable Sterile Pancreatobiliary Tissue Sampling Forceps

Model	Diameter	Length	Open Width	Working Channel	Head Characteristics
BF1027T	1.0mm	2700mm	4.0	≥1.2	With Spike
BF1529	1.5mm	2900mm	4.6	≥1.7	Without Spike

## Walz EHL

EHL (Electrohydraulic Lithotripsy) – a simple and effective method for endoscopic large stone management



Before

After

Practical application of the Walz EL 27  
in the common bile duct

View the [EHL in slow motion video](#)

## Features and benefits of the Walz EL 27

- **Highest efficiency** compared to other technologies, short operation times
- Stones are normally **disintegrated** with only a **few shock waves**
- **Security**: minimized tensile phases of the micro shock waves help to treat soft tissue with care.
- **Highly localized energy transfer** compared to laser and extracorporeal shock waves
- **Economical**: maintenance-free device
- **Endoscope protection** through rounded probe tips; no breaking problem compared to laser fibers
- **Controlled energy levels**: 3 intensities (up to 950 mJ) adjusted to usage in gastroenterology and urology
- Very fast pulses, sharply rising amplitudes for **most effective stone fragmentation**

## EHL Probes

- Highly flexible but keep their position
- Precisely worked probe tip for reproduceable shock waves
- Centred micro spark plasmas keep distances to the tissue and facilitate targeting
- Endoscope protection through rounded edges at the tip of the probe, no breaking problem compared to laser fiber



Article number	Diameter Ø		Length	Characteristics
	Fr.	mm	mm	
P201400FST	2,0	0,7	1400	
P30950FST	3,0	1,0	950	
P45600FST	4,5	1,5	600	
P70450FST	7,0	2,3	450	
P243000FST	2,4	0,8	3000	
P243000SST - NEW	2,4	0,8	3000	proximally reinforced
P303000FST	3,0	1,0	3000	
P303000SST - NEW	3,0	1,0	3000	proximally reinforced
P453000FST	4,5	1,5	3000	

## Technical Specifications:

Dimensions	Power supply	EHL Electric charge
Width: 320 mm, Height: 120 mm, Depth: 240 mm  Weight: 7,5 kg	Voltage Versions 100V +_ 10% 1,4 A 115V +_ 10% 1,2 A 230V +_ 10% 0,6 A	Intensity A 250 mJ Intensity B 500 mJ Intensity C 950 mJ



# Aquilant

A HC21 Company

gi@hc21.group  
01256 306506  
[healthcare21.eu](http://healthcare21.eu)